

2022

# THE CUTTING EDGE

CUTTING PRICES ON MAJOR BRANDS

## FOX & GUNN

Trade tools & hardware for over 90 years

90  
YEAR  
ANNIVERSARY  
2019

100%  
NEW ZEALAND  
OWNED  
AND OPERATED

All prices shown in The Cutting Edge exclude GST unless otherwise stated.



BLU-MOL®

NWS

TOLSEN



Champion  
FASTENERS



KOMELON®



NORMA

JOSCO

Arlube®  
Lubrication Equipment



**ARO SPEED COUPLER**  
1/4" BSP  
(MODEL: 210)



A100 \$11.13+GST

**ARO SPEED COUPLER**  
1/4" BSP  
ECONOMY VERSION (MODEL: 101B)



A101B \$6.54+GST

**ARO SPEED COUPLER**  
3/8" BSP  
(MODEL: 380)



A112 \$16.34+GST

**ARO CONNECTOR BSP MALE**



A102	CONNECTOR 1/8" BSP MALE (MODEL: A2607)	\$1.64+GST
A103	CONNECTOR 1/4" BSP MALE (MODEL: A2608)	\$1.64+GST
A108	CONNECTOR 3/8" BSP MALE (MODEL: A2700)	\$2.87+GST
A112A	CONNECTOR 1/4" BSP MALE (MODEL: 3807)	\$3.70+GST
A113	CONNECTOR 3/8" BSP MALE (MODEL: 3808)	\$3.70+GST

**ARO HOSE INSERT**



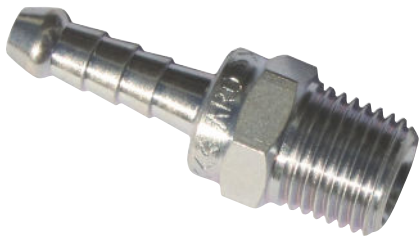
A105	HOSE INSERT 6mm (MODEL: A3946)	\$1.64+GST
A106	HOSE INSERT 8mm (MODEL: A3947)	\$1.64+GST
A107	HOSE INSERT 10mm (MODEL: A3948)	\$1.64+GST
A115	HOSE INSERT 10mm (MODEL: 3810)	\$3.70+GST

**ARO CONNECTOR BSP FEMALE**



A104	1/4" BSP FEMALE (MODEL: A2609)	\$1.64+GST
A114	3/8" BSP FEMALE (MODEL: 3809)	\$3.70+GST

**ARO TAILPIECE**



A109	1/4" BSP MALE x 6mm HOSE TAILPIECE	\$1.64+GST
A110	1/4" BSP MALE x 8mm HOSE TAILPIECE	\$1.64+GST
A111	1/4" BSP MALE x 10mm HOSE TAILPIECE	\$1.64+GST
A116	3/8" BSP MALE x 10mm HOSE TAILPIECE	\$3.70+GST

**ARO AIR LINE HOSE KIT**



- > A100 - Aro Speed Coupler 1/4" BSP (model: 210)
- > A103 - Aro connector 1/4" BSP male
- > A107 - Aro hose insert 10mm
- > TS110 - Aro PTFE thread seal tape 12mm x 10m
- > N-012-22/9w1p Norma Hose Clamp x 2

ARO-S1 ARO AIR LINE HOSE KIT \$18.26+GST

**MVRK PIRANHA 200MM MULTI FUNCTION INDUSTRIAL SNIPS + HOLSTER**

**NEW**

- > Precision ground and honed.
- > Optimised geometry to cut paper and card, Kevlar, carbon and glass cloth, fabric, leather, carpet, wire, cable, sheet metals, rubber and other tough materials.
- > Ambidextrous with dual sided, quick release thumb lock.
- > Durable soft grip chemical resistant handles.



1003-MF200 \$20.73+GST

**MVRK PIRANHA 200MM HIGH TENSILE MULTI FUNCTION INDUSTRIAL SNIPS + HOLSTER**

**NEW**

- > Precision ground and honed.
- > Optimised geometry to cut paper and card, Kevlar, carbon and glass cloth, fabric, leather, carpet, wire, cable, sheet metals, rubber and other tough materials.
- > Ambidextrous with dual sided, quick release thumb lock.
- > Durable soft grip chemical resistant handles.



1003-MF200HT \$33.53+GST

**MVRK PIRANHA 230MM MULTI FUNCTION INDUSTRIAL SNIPS + HOLSTER**

**NEW**

- > Precision ground and honed.
- > Optimised geometry to cut paper and card, Kevlar, carbon and glass cloth, fabric, leather, carpet, wire, cable, sheet metals, rubber and other tough materials.
- > Ambidextrous with dual sided, quick release thumb lock.
- > Durable soft grip chemical resistant handles.



1003-MF230 \$24.10+GST

### ARLUBE 18V CORDLESS GREASE GUN



- > Cordless, battery powered grease gun
- > 18V battery
- > Suits 450gram cartridges
- > Develops up to 10,000psi
- > 75gram per minute volume grease flow
- > 1 hour quick charge
- > 2 x 18V long-life NiCad batteries included
- > 1m heavy duty high pressure hose
- > Up to 5 cartridges of grease on a single charge of the battery
- > Three-way loading - cartridge, bulk grease or filler pump
- > Heavy duty plastic storage case
- > Shoulder strap

**FREE BONUS!**

ARG2230 \$311.35+GST  
**ARG2000 ARLUBE 450GM ECONOMY LEVER ACTION GREASE GUN FREE**

### ARLUBE 450GM PREMIUM PROFESSIONAL LEVER ACTION GREASE GUN



- > NEW - thick piston for greater volume
- > NEW - coarse thread to stop cross threading
- > Lever action
- > Suitable for use with 450gram cartridges or bulk grease
- > High pressure - up to 12,000psi
- > Heavy duty 4 jaw coupler
- > Can be loaded from filler pump (ARP3100)
- > Includes 150mm rigid extension

ARG2555 \$81.05+GST

### ARLUBE BATTERY OPERATED PUMP REQUIRES 2 x D BATTERIES (WITH NOZZLE)



- Applications:
- > Suction Type: Battery operated submersible motor.
  - > Applicable Liquids: Gasoline, Kerosene, Diesel Oils, Light Oils, Water (not safe for drinking).
  - > User friendly automatic liquid supply
  - > Auto stop by sensor before over flowing.

- Specifications:
- > Delivery Volume: About 9LPM
  - > Main Material: P.P, P.E, Acetal, ABS
  - > Power: DC 3V ("D" size battery x2)
  - > Pump up to about 4,000 liters
  - > Total length: 592mm
  - > Suction tube length: 385mm
  - > Suction intake Dia: 32mm
  - > Head outer Dia: 40mm
  - > Discharge tube length: 660mm
  - > Discharge tube outer Dia: 19.5mm
  - > Batteries not included.

ARP3440 \$42.14+GST

### ARLUBE 450GM PREMIUM PROFESSIONAL TRIGGER GREASE GUN



- > Trigger action
- > Suitable for use with 450gram cartridges or bulk grease
- > High pressure
- > Heavy duty 4 jaw coupler
- > Can be loaded from filler pump (ARP3100)
- > Includes 300mm flexible extension to get into those difficult to reach places

ARG2666 \$87.54+GST

## ARLUBE FLEXIBLE SPOUT OIL CAN 500CC



- > Flexible spout
- > Features an efficient force-feed metal pump mechanism
- > Quality mechanism
- > 500cc capacity

ARC3699 \$7.29+GST

## ARLUBE RIGID SPOUT OIL CAN 500CC



- > Rigid spout
- > Features an efficient force-feed metal pump mechanism
- > Quality mechanism
- > 500cc capacity

ARC3698 \$6.60+GST

## ARLUBE FLEXIBLE GREASE GUN EXTENSION



- > Highly flexible
- > Industrial quality
- > Spiral wire protector at gun end

ARA2725	EXT 200mm	\$9.52+GST
ARA2726	EXT 300mm	\$12.59+GST
ARA2727	EXT 450mm	\$17.35+GST
ARA2730	EXT 700mm	\$27.34+GST

## ARLUBE ANGLE GREASE COUPLER (CLAM)



- > Reach into hard to get places
- > Easy to fit on and off grease nipples
- > Easy to lubricate
- > Grease nipple insert to help direct grease flow

ARA2740P \$8.45+GST

## ARLUBE QUICK LOCKING GREASE COUPLER



- > MAX Bursting Pressure: 15,000PSI / 1034bar
- > Working Pressure 10,000PSI / 690 bar
- > Ultralight 85g only (connector included)
- > 74MM X 30MM
- > Easy to use in narrow spaces
- > Four hardened spring steel jaws are resilient under pressure

ARA2750P \$56.70+GST

## ARLUBE 9.0 LITRE MANUAL & PNEUMATIC FLUID EXTRACTOR



- > Manual and Pneumatic
- > 9.0 L capacity
- > Can be used in boats for draining bilges
- > Can be used to drain engine through the dip stick
- > Auto shut off

ARD3710 \$187.05+GST

## ARLUBE THREAD TESTER



- > Includes all popular sizes including: BSP, metric, NPT, UNF, BSW & BSF

ARA6910 \$33.79+GST

## ARLUBE LARGE FUNNEL WITH FILTER & SPOUT (3 PRT)



- > Angular spout is convenient for use in hard to reach places
- > Comes complete with removable filter
- > 155mm wide
- > Polyethylene chemical and oil resistant

ARF9110 \$7.99+GST

## ARLUBE 450GM PROFESSIONAL LEVER ACTION GREASE GUN



- > Lever action
- > Suitable for use with 450gram cartridges or bulk grease
- > Up to 8,000psi
- > 600cc capacity with bulk grease
- > Heavy duty 4 jaw coupler
- > Can be loaded from filler pump (ARP3100)
- > Includes 150mm rigid extension

ARG2111 \$29.18+GST

## ARLUBE 20L CHEM PUSH PULL PUMP ST/STL



- > Stainless Steel
- > Suits 20L drums
- > T-handle type
- > Suitable for the transfer of ammonia, mild acids and alkalis, nitric acid up to 40% concentration, petrol, oil and diesel
- > Stainless steel T316 metallic parts with PTFE seals and PTFE suction tube

ARP3430 \$161.25+GST

## ARLUBE 1.2L METAL FUNNEL, FILTER & SPOUT



- > With filter
- > 1.2L capacity
- > Heavy duty metal construction
- > Anti-splash rim
- > Strong plastic outlet
- > Removable brass filter
- > 160mm diameter 20mm outlet
- > Robust

ARF9115 \$23.04+GST

## ARLUBE FOUR FUNNEL SET



- > A selection of high quality plastic funnels to suit a variety of applications
- > Suitable of use with ATF, hydraulic, gear and engine oils and most fuels including diesel and petrol

ARF9105 \$9.60+GST

## ARLUBE 450GM PROFESSIONAL TRIGGER ACTION GREASE GUN



- > Trigger action
- > Suitable for use with 450gram cartridges or bulk grease
- > Up to 6,000psi
- > 600cc capacity with bulk grease
- > Heavy duty 4 jaw coupler
- > Can be loaded from filler pump (ARP3100)
- > Includes 300mm flexible extension

ARG2222 \$35.32+GST

### ARLUBE 205L LEVER ACTION DRUM PUMP

**Arlube**  
Lubrication Equipment

**FREE BONUS!**

- > Oil transfer
- > Suits 205L / 60L drums
- > 250cc per stroke
- > Suitable for diesel, oil, kerosene, coolant and ATF
- > Can also be used for other light to medium viscosity lubricants
- > Quality mechanism
- > Dual bung threads for both drum types



ARP3370 \$72.18+GST  
ARF9105 ARLUBE FOUR FUNNEL SET **FREE**

### ARLUBE 30M WATER HOSE REEL

**Arlube**  
Lubrication Equipment

- > Industrial quality
- > Low speed retraction
- > Metal mounting bracket
- > Metal carry handle
- > Replaceable hose
- > 30m x 1/2" ID hose
- > Nozzle holder
- > Water nozzle included



ARR7230 \$234.96+GST

### ARLUBE 400GM LEVER ACTION GREASE GUN

**Arlube**  
Lubrication Equipment

- > Suits 400gram cartridges
- > Develops up to 10,000psi
- > Three-way loading
- > cartridge, bulk grease or filler pump
- > 400cc capacity when using bulk grease
- > Includes a 150mm rigid extension and a heavy duty 4 jaw coupler
- > Delivers a minimum of 28g/40 strokes



ARG2333 \$35.78+GST

### ARLUBE 400GM TRIGGER ACTION GREASE GUN

**Arlube**  
Lubrication Equipment

- > Suits 400gram cartridges
- > Develops up to 8,000psi
- > Delivers a minimum of 28g/40 strokes
- > Three-way loading
- > cartridge, bulk grease or filler pump
- > 400cc capacity when using bulk grease
- > 450mm high pressure flexible nylon hose
- > Heavy duty 4 jaw coupler



ARG2444 \$47.61+GST

### ARLUBE 500CC OIL SUCTION GUN

**Arlube**  
Lubrication Equipment

- > Quality no leak piston/cylinder design
- > Suitable for emptying and filling engines, gear boxes and differentials
- > Industrial quality
- > Long flexible suction hose
- > 500cc capacity



ARG3620 \$36.86+GST

### ARLUBE 1000CC OIL SUCTION GUN

**Arlube**  
Lubrication Equipment

- > Quality no leak piston/cylinder design
- > Suitable for emptying and filling engines, gear boxes and differentials
- > Industrial quality
- > Long flexible suction hose
- > 1000cc capacity



ARG3625 \$46.07+GST

### ARLUBE MINI OIL SUCTION GUN (200CC)

**Arlube**  
Lubrication Equipment

- > Small convenient size
- > With plastic hose
- > Economical
- > 200cc capacity



ARG3630 \$15.36+GST

### ARLUBE 205L ROTARY PUMP WITH HD RUBBER HOSE

**Arlube**  
Lubrication Equipment

**FREE BONUS!**

- > Suits 205L and fits 60L drums
- > Up to 23LPM
- > Suitable for petrol, diesel, kerosene and light oils
- > Cast alloy pump body
- > 2.2m of 25mm heavy duty fuel hose
- > Can syphon and transfer fuels in reverse



ARP3255 \$144.36+GST  
ARF9105 ARLUBE FOUR FUNNEL SET **FREE**

### ARLUBE 4L GARAGE FUNNEL WITH FILTER

**Arlube**  
Lubrication Equipment

- > Polyethylene - chemical and oil resistant
- > Removable brass filter
- > 190mm x 280mm with 30mm outlet
- > Robust



ARF9120 \$18.97+GST

### ARLUBE 15M X 1/2ID AIR REEL OPEN STEEL FRAME

**Arlube**  
Lubrication Equipment

**FREE BONUS!**

**BONUS**  
ARR745 BRACKET when you buy ARR7435, ARR7425, or ARR7415 While stocks last!!!

- > Open steel frame
- > Industrial quality
- > -5° to 45°C
- > Includes 1m inlet hose
- > Metal mounting bracket
- > Fitting: 1/4" BSP
- > Working pressure: 24 bar/348 psi
- > Can be mounted on wall/ceiling for 180° swivel
- > Automatic retractable rubber hose with latch
- > 15m x 1/2" ID hose



ARR7435 \$215.47+GST  
ARR7475 ARLUBE HOSE REEL SWIVEL BRACKET FOR ARR7415, ARR7425 AND ARR7435 **FREE**

### ARLUBE 15M X 3/8ID AIR REEL OPEN STEEL FRAME

**Arlube**  
Lubrication Equipment

**FREE BONUS!**

**BONUS**  
ARR745 BRACKET when you buy ARR7435, ARR7425, or ARR7415 While stocks last!!!

- > Open steel frame
- > Industrial quality
- > Temperature: -5° to 45°C
- > Includes 1m inlet hose
- > Metal mounting bracket
- > Fitting: 1/4" BSP
- > Working pressure: 24 bar/348 psi
- > Can be mounted on wall or ceiling for 180° swivel
- > Automatic retractable rubber hose with latch
- > 15m x 3/8" ID hose



ARR7415 \$177.04+GST  
ARR7475 ARLUBE HOSE REEL SWIVEL BRACKET FOR ARR7415, ARR7425 AND ARR7435 **FREE**

### ARLUBE 20M X 3/8ID AIR REEL OPEN STEEL FRAME

**Arlube**  
Lubrication Equipment

**FREE BONUS!**

**BONUS**  
ARR745 BRACKET when you buy ARR7435, ARR7425, or ARR7415 While stocks last!!!

- > Open steel frame
- > Industrial quality
- > Temperature: -5° to 45°C
- > Includes 1m inlet hose
- > Metal mounting bracket
- > Fitting: 1/4" BSP
- > Working pressure: 24 bar/348 psi
- > Can be mounted on wall or ceiling for 180° swivel
- > Automatic retractable rubber hose with latch
- > 20m x 3/8" ID hose



ARR7425 \$208.39+GST  
ARR7475 ARLUBE HOSE REEL SWIVEL BRACKET FOR ARR7415, ARR7425 AND ARR7435 **FREE**



**BESSEY STEEL ENGINEERING QUICK ACTION CLAMP**



B6050	BESSEY GZ20K 200 x 100mm	\$59.89+GST
B6051	BESSEY GZ25K 250 x 120mm	\$72.18+GST
B6052	BESSEY GZ30K 300 x 140mm	\$87.54+GST
B6053	BESSEY GZ40K 400 x 120mm	\$101.36+GST
B6054	BESSEY GZ50K 500 x 120mm	\$105.96+GST

**BESSEY STEEL CONSTRUCTION CLAMP**



B6110	BESSEY STB30M 300 x 175mm	\$259.54+GST
B6112	BESSEY STB50M 500 x 175mm	\$290.25+GST
B6115	BESSEY STB60M 600 x 175mm	\$352.86+GST

**BESSEY PROFESSIONAL WOODWORKING CLAMP**



B6000	TG10 100 x 50mm	\$17.35+GST
B6001	TG16-2K 160 x 80mm	\$29.49+GST
B6002	TG20-2K 200 x 100mm	\$41.46+GST
B6003	TG25S10-2K 250 x 100mm	\$46.07+GST

**BORDO QUICK CHANGE RATCHET T HANDLE TAP WRENCH SET**



4996-1/2QC

**BORDO E-Z CHAMFER TOOL 8-22mm OD E-Z CHAMFER TOOL**



\$98.29+GST  
2210-822

\$28.50+GST

**BORDO DELTA M2 DRILL SET (19 PCE) 1-10mm WITH BONUS STEP DRILL**



2015-M2-SDM1

\$82.01+GST

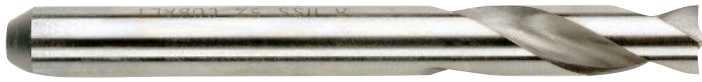
**BORDO DELTA M3 DRILL SET (25 PCE) 1-13mm WITH BONUS STEP DRILL**



2015-M3-SDM1

\$164.29+GST

## SPOT WELD DRILL

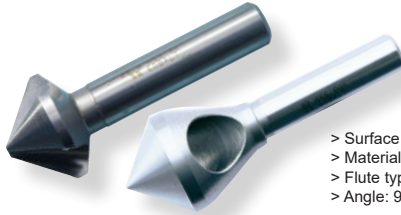


2555-6X66	SPOT WELD DRILL 6mm x 66mm	\$17.44 <sup>+GST</sup>
2555-8X45	SPOT WELD DRILL 8mm x 45mm	\$16.96 <sup>+GST</sup>
2555-8X79	SPOT WELD DRILL 8mm x 79mm	\$16.96 <sup>+GST</sup>

## BORDO COUNTERSINK



> Surface finish: bright  
> Material: HSS-Co5  
> Flute type: triple flute  
> Angle: 90°



> Surface finish: bright  
> Material: HSS-Co5  
> Flute type: cross hole  
> Angle: 90°

3840-10	COUNTERSINK CROSSHOLE 10mm x 90deg	\$24.88 <sup>+GST</sup>
3840-15	COUNTERSINK CROSSHOLE 15mm x 90deg	\$26.88 <sup>+GST</sup>
3840-20	COUNTERSINK CROSSHOLE 20mm x 90deg	\$44.54 <sup>+GST</sup>
3840-25	COUNTERSINK CROSSHOLE 25mm x 90deg	\$69.11 <sup>+GST</sup>
3843-10	COUNTERSINK 3 FLUTE 10mm x 90deg	\$23.11 <sup>+GST</sup>
3843-14.4	COUNTERSINK 3 FLUTE 14.4mm x 90deg	\$27.18 <sup>+GST</sup>
3843-20.5	COUNTERSINK 3 FLUTE 20.5mm x 90deg	\$41.31 <sup>+GST</sup>
3843-25	COUNTERSINK 3 FLUTE 25mm x 90deg	\$65.88 <sup>+GST</sup>
3843-28	COUNTERSINK 3 FLUTE 28mm x 90deg	\$73.71 <sup>+GST</sup>

## CARBON STEEL HEX DIE NUT



4830-10	10mm x 1.50mm	\$24.57 <sup>+GST</sup>
4830-12	12mm x 1.75mm	\$24.57 <sup>+GST</sup>
4830-14	14mm x 2.00mm	\$32.07 <sup>+GST</sup>
4830-16	16mm x 2.00mm	\$32.25 <sup>+GST</sup>
4830-5	5mm x 0.80mm	\$18.43 <sup>+GST</sup>
4830-6	6mm x 1.00mm	\$16.89 <sup>+GST</sup>
4830-8	8mm x 1.25mm	\$16.89 <sup>+GST</sup>
4831-10	10mm x 1.25mm	\$26.79 <sup>+GST</sup>
4831-12	12mm x 1.50mm	\$26.79 <sup>+GST</sup>
4830-7	7mm x 1.00mm	\$16.49 <sup>+GST</sup>
4830-8	8mm x 1.25mm	\$16.22 <sup>+GST</sup>
4830-9	9mm x 1.25mm	\$16.49 <sup>+GST</sup>
4831-10	10mm x 1.25mm	\$25.51 <sup>+GST</sup>
4831-12	12mm x 1.50mm	\$25.51 <sup>+GST</sup>
4831-14	14mm x 1.50mm	\$32.85 <sup>+GST</sup>
4831-22	22mm x 1.50mm	\$63.66 <sup>+GST</sup>
4831-24	24mm x 2.0mm	\$79.43 <sup>+GST</sup>
4831-8	8mm x 1.00mm	\$18.25 <sup>+GST</sup>
4832-10	10mm x 1.00mm	\$25.51 <sup>+GST</sup>
4832-12	12mm x 1.25mm	\$25.51 <sup>+GST</sup>
4832-18	18mm x 1.50mm	\$42.30 <sup>+GST</sup>
4833-16	16mm x 1.50mm	\$32.85 <sup>+GST</sup>
4833-20	20mm x 1.50mm	\$42.30 <sup>+GST</sup>
4833-25	25mm x 1.50mm	\$79.43 <sup>+GST</sup>

## BORDO CENTRE DRILL DOUBLE ENDED



2560-1	NO.1 DOUBLE ENDED	\$6.60 <sup>+GST</sup>
2560-2	NO.2 DOUBLE ENDED	\$6.68 <sup>+GST</sup>
2560-3	NO.3 DOUBLE ENDED	\$7.45 <sup>+GST</sup>
2560-4	NO.4 DOUBLE ENDED	\$9.21 <sup>+GST</sup>
2560-5	NO.5 DOUBLE ENDED	\$14.74 <sup>+GST</sup>
2560-6	NO.6 DOUBLE ENDED	\$27.03 <sup>+GST</sup>

## PANNEL DRILLS DOUBLE ENDED



2345-30T	NO.30 (3.3mm) (10PK CLAM)	\$18.78 <sup>+GST</sup>
2345-20T	NO.20 (4.1mm) (10PK CLAM)	\$23.26 <sup>+GST</sup>
2345-1/8S	1/8" TWIN PACK	\$3.96 <sup>+GST</sup>
2345-30S	NO.30 (3.3mm) TWIN PACK	\$3.96 <sup>+GST</sup>
2345-20S	NO.20 (4.1mm) TWIN PACK	\$4.78 <sup>+GST</sup>
2345-11S	NO.11 (4.9mm) TWIN PACK	\$5.60 <sup>+GST</sup>
2345-11T	NO.11 (4.9mm) (10PK CLAM)	\$27.36 <sup>+GST</sup>
2345-1/8T	1/8" (10PK CLAM)	\$18.78 <sup>+GST</sup>

## COUNTERBORE



3870-3.0	M3.0 x 6.00mm	\$49.14 <sup>+GST</sup>
3870-3.5	M3.5 x 6.50mm	\$49.14 <sup>+GST</sup>
3870-4.0	M4.0 x 8.00mm	\$49.14 <sup>+GST</sup>
3870-5.0	M5.0 x 10.00mm	\$53.75 <sup>+GST</sup>
3870-6.0	M6.0 x 11.00mm	\$58.36 <sup>+GST</sup>
3870-8.0	M8.0 x 15.00mm	\$79.86 <sup>+GST</sup>
3870-10.0	M10.0 x 18.00mm	\$152.04 <sup>+GST</sup>
3870-12.0	M12.0 x 20.00mm	\$152.04 <sup>+GST</sup>

## BORDO SCREW EXTRACTOR



9900-1W	NO.1 (WITH DRILL)	\$7.68 <sup>+GST</sup>
9900-2W	NO.2 (WITH DRILL)	\$8.14 <sup>+GST</sup>
9900-3W	NO.3 (WITH DRILL)	\$9.98 <sup>+GST</sup>
9900-4W	NO.4 (WITH DRILL)	\$10.98 <sup>+GST</sup>
9900-5W	NO.5 (WITH DRILL)	\$13.67 <sup>+GST</sup>
9900-SM2	10 PCE SET (INCLUDES DRILLS)	\$64.50 <sup>+GST</sup>

**DRILL BIT SURFACE TREATMENT**

**BRIGHT FINISH**  
A bright finish tool has no surface treatment and is supplied in the as-ground condition. These tools are suitable for general purpose use, particularly for non-ferrous applications.

**BRIGHT/BLACK FINISH**  
These drills are ground and then a black finish is achieved by steam tempering a thermal process resulting in a porous tool coating.



**BRIGHT FINISH**  
A bright finish tool has no surface treatment and is supplied in the as-ground condition. These tools are suitable for general purpose use, particularly for non-ferrous applications.



**BRONZE FINISH**  
(gold oxide) This metallic brown coloured low temperature temper treatment is normally only used on cobalt tools for identification purposes. Cobalt HSS drills are extremely hard and provide superior performance and increased tool life especially in stainless steel and high tensile steel.

**DRILL BIT MATERIALS**

**HIGH SPEED STEEL (HSS)**  
Bordo HSS drills are ground from premium quality M2 high speed steel. HSS can withstand higher operating temperatures than carbon steel without losing its temper (hardness). This property allows HSS to cut faster than high carbon steel, hence the name high speed steel. M2 HSS is an alloyed steel in the tungsten molybdenum series which typically contains 4% Chromium, 5% Molybdenum, 6% tungsten, 2% Vanadium and 1% Carbon (approx. by % wt) The material is also subject to high temperature heat treatment to complete the process. HSS has very high wear resistance, a bending strength up to 4700MPa with high toughness and themoplasticity.

HSS drills are ideal for general purpose use in a wide variety of ferrous and non-ferrous metals, timber and plastic.



**BLACK FINISH**  
(also called blue finish) A black finish is achieved by steam tempering, a thermal process resulting in a porous tool coating. This surface helps to keep lubricant on the tool, particularly important on the cutting edges, thus reducing friction and cold welding. The result is increased tool life. Black finish tools are generally recommended for ferrous applications where the oxide layer aids chip flow and heat dissipation.

**JOBBER DRILLS BRIGHT SOLD IN PACKS OF 10**



**DRILL BIT SURFACE TREATMENT BRIGHT FINISH**

2007-1.00	1.00mm BULK	\$1.60+GST
2007-1.50	1.50mm BULK	\$1.46+GST
2007-2.00	2.00mm BULK	\$1.31+GST
2007-2.50	2.50mm BULK	\$1.31+GST
2007-3.00	3.00mm BULK	\$1.28+GST
2007-3.20	3.20mm BULK	\$1.28+GST
2007-3.30	3.30mm BULK	\$1.31+GST
2007-3.50	3.50mm BULK	\$1.39+GST
2007-4.00	4.00mm BULK	\$1.57+GST
2007-4.10	4.10mm BULK	\$1.60+GST
2007-4.20	4.20mm BULK	\$1.80+GST
2007-4.50	4.50mm BULK	\$1.80+GST
2007-4.90	4.90mm BULK	\$2.05+GST
2007-5.00	5.00mm BULK	\$2.05+GST
2007-5.10	5.10mm BULK	\$2.22+GST
2007-5.50	5.50mm BULK	\$2.42+GST
2007-6.00	6.00mm BULK	\$2.71+GST
2007-6.50	6.50mm BULK	\$3.11+GST
2007-7.00	7.00mm BULK	\$3.56+GST
2007-7.50	7.50mm BULK	\$4.08+GST
2007-8.00	8.00mm BULK	\$4.36+GST
2007-8.50	8.50mm BULK	\$4.90+GST
2007-9.00	9.00mm BULK	\$5.45+GST
2007-9.50	9.50mm BULK	\$6.07+GST
2007-10.00	10.00mm BULK	\$6.44+GST
2007-10.50	10.50mm BULK	\$7.32+GST
2007-11.00	11.00mm BULK	\$8.43+GST
2007-11.50	11.50mm BULK	\$9.49+GST
2007-12.00	12.00mm BULK	\$10.77+GST
2007-12.50	12.50mm BULK	\$11.60+GST
2007-13.00	13.00mm BULK	\$13.40+GST

**BORDO LONG SERIES**



2501-1.00	1.0mm x 56mm LONG	\$6.88+GST
2501-1.50	1.5mm x 70mm LONG	\$6.88+GST
2501-2.00	2.0mm x 85mm LONG	\$6.88+GST
2501-2.50	2.5mm x 95mm LONG	\$6.88+GST
2501-3.00	3.0mm x 100mm LONG	\$6.81+GST
2501-3.30	3.3mm x 106mm LONG	\$7.66+GST
2501-3.50	3.5mm x 112mm LONG	\$7.48+GST
2501-4.00	4.0mm x 119mm LONG	\$7.48+GST
2501-4.50	4.5mm x 126mm LONG	\$8.60+GST
2501-5.00	5.0mm x 132mm LONG	\$9.04+GST
2501-5.40	5.4mm x 139mm LONG	\$7.04+GST
2501-5.50	5.5mm x 139mm LONG	\$8.26+GST
2501-6.00	6.0mm x 139mm LONG	\$13.58+GST
2501-6.50	6.5mm x 148mm LONG	\$12.29+GST
2501-7.00	7.0mm x 156mm LONG	\$15.50+GST
2501-7.50	7.5mm x 156mm LONG	\$16.93+GST
2501-8.00	8.0mm x 165mm LONG	\$18.43+GST
2501-8.50	8.5mm x 165mm LONG	\$21.24+GST
2501-9.00	9.0mm x 175mm LONG	\$23.70+GST
2501-9.50	9.5mm x 175mm LONG	\$26.09+GST
2501-10.00	10.0mm x 184mm LONG	\$27.26+GST
2501-10.50	10.5mm x 184mm LONG	\$30.35+GST
2501-11.00	11.0mm x 195mm LONG	\$35.79+GST
2501-11.50	11.5mm x 195mm LONG	\$38.44+GST
2501-12.00	12.0mm x 203mm LONG	\$41.95+GST
2501-12.50	12.5mm x 205mm LONG	\$47.38+GST
2501-13.00	13.0mm x 205mm LONG	\$52.33+GST



**STANDARD POINT**  
(Chisel point) Standard point is suitable for general purpose drilling



**JOBBER DRILL COBALT**



2011-3.00S	3.00mm TWIN PACK	\$3.64+GST	2011-7.50S	7.50mm SINGLE PACK	\$13.17+GST
2011-1.50S	1.50mm TWIN PACK	\$3.68+GST	2011-8.00S	8.00mm SINGLE PACK	\$11.88+GST
2011-2.00S	2.00mm TWIN PACK	\$3.68+GST	2011-8.50S	8.50mm SINGLE PACK	\$13.49+GST
2011-2.50S	2.50mm TWIN PACK	\$3.68+GST	2011-9.00S	9.00mm SINGLE PACK	\$14.68+GST
2011-3.50S	3.50mm SINGLE PACK	\$3.95+GST	2011-9.50S	9.50mm SINGLE PACK	\$16.23+GST
2011-4.00S	4.00mm SINGLE PACK	\$4.75+GST	2011-10.00S	10.00mm SINGLE PACK	\$17.04+GST
2011-4.50S	4.50mm SINGLE PACK	\$4.75+GST	2011-10.50S	10.50mm SINGLE PACK	\$20.37+GST
2011-5.00S	5.00mm SINGLE PACK	\$5.57+GST	2011-11.00S	11.00mm SINGLE PACK	\$20.62+GST
2011-5.50S	5.50mm SINGLE PACK	\$6.33+GST	2011-11.50S	11.50mm SINGLE PACK	\$25.37+GST
2011-6.00S	6.00mm SINGLE PACK	\$7.13+GST	2011-12.00S	12.00mm SINGLE PACK	\$27.75+GST
2011-6.50S	6.50mm SINGLE PACK	\$8.85+GST	2011-12.50S	12.50mm SINGLE PACK	\$30.12+GST
2011-7.00S	7.00mm SINGLE PACK	\$10.97+GST	2011-13.00S	13.00mm SINGLE PACK	\$36.80+GST





## ANNULAR CUTTERS

7400-1/4X102	1/4" X 103mm STEPPED PIN TO SUIT 50mm DEEP ANNULAR CUTTER	\$5.40 <sup>+GST</sup>
7400-1/4X77	1/4" STEPPED PIN TO SUIT 25mm DEEP ANNULAR CUTTER	\$4.27 <sup>+GST</sup>
7400-12X25	12mm x 25mm DEEP	\$24.28 <sup>+GST</sup>
7400-12X50	12mm x 50mm DEEP	\$31.31 <sup>+GST</sup>
7400-13X25	13mm x 25mm DEEP	\$24.28 <sup>+GST</sup>
7400-13X50	13mm x 50mm DEEP	\$31.31 <sup>+GST</sup>
7400-14X25	14mm x 25mm DEEP	\$26.79 <sup>+GST</sup>
7400-14X50	14mm x 50mm DEEP	\$33.69 <sup>+GST</sup>
7400-15X25	15mm x 25mm DEEP	\$26.79 <sup>+GST</sup>
7400-15X50	15mm x 50mm DEEP	\$33.69 <sup>+GST</sup>
7400-16X25	16mm x 25mm DEEP	\$29.79 <sup>+GST</sup>
7400-16X50	16mm x 50mm DEEP	\$35.99 <sup>+GST</sup>
7400-17X25	17mm x 25mm DEEP	\$29.79 <sup>+GST</sup>
7400-17X50	17mm x 50mm DEEP	\$35.99 <sup>+GST</sup>
7400-18X25	18mm x 25mm DEEP	\$32.09 <sup>+GST</sup>
7400-18X50	18mm x 50mm DEEP	\$38.34 <sup>+GST</sup>
7400-19X25	19mm x 25mm DEEP	\$32.09 <sup>+GST</sup>
7400-19X50	19mm x 50mm DEEP	\$38.34 <sup>+GST</sup>
7400-20X25	20mm x 25mm DEEP	\$35.59 <sup>+GST</sup>
7400-20X50	20mm x 50mm DEEP	\$43.35 <sup>+GST</sup>
7400-21X25	21mm x 25mm DEEP	\$35.54 <sup>+GST</sup>
7400-21X50	21mm x 50mm DEEP	\$43.35 <sup>+GST</sup>
7400-22X25	22mm x 25mm DEEP	\$39.94 <sup>+GST</sup>
7400-22X50	22mm x 50mm DEEP	\$46.96 <sup>+GST</sup>
7400-23X25	23mm x 25mm DEEP	\$39.94 <sup>+GST</sup>
7400-23X50	23mm x 50mm DEEP	\$46.96 <sup>+GST</sup>
7400-24X25	24mm x 25mm DEEP	\$43.06 <sup>+GST</sup>
7400-24X50	24mm x 50mm DEEP	\$53.21 <sup>+GST</sup>
7400-25X25	25mm x 25mm DEEP	\$43.06 <sup>+GST</sup>
7400-25X50	25mm x 50mm DEEP	\$53.21 <sup>+GST</sup>
7400-26X25	26mm x 25mm DEEP	\$46.22 <sup>+GST</sup>
7400-26X50	26mm x 50mm DEEP	\$55.56 <sup>+GST</sup>
7400-27X25	27mm x 25mm DEEP	\$47.71 <sup>+GST</sup>
7400-27X50	27mm x 50mm DEEP	\$57.12 <sup>+GST</sup>
7400-28X25	28mm x 25mm DEEP	\$48.20 <sup>+GST</sup>
7400-28X50	28mm x 50mm DEEP	\$59.50 <sup>+GST</sup>
7400-29X25	29mm x 25mm DEEP	\$49.96 <sup>+GST</sup>
7400-30X25	30mm x 25mm DEEP	\$50.91 <sup>+GST</sup>
7400-30X50	30mm x 50mm DEEP	\$64.96 <sup>+GST</sup>
7400-31X25	31mm x 25mm DEEP	\$54.16 <sup>+GST</sup>
7400-32X25	32mm x 25mm DEEP	\$56.04 <sup>+GST</sup>
7400-32X50	32mm x 50mm DEEP	\$68.87 <sup>+GST</sup>
7400-33X25	33mm x 25mm DEEP	\$58.06 <sup>+GST</sup>
7400-33X50	33mm x 50mm DEEP	\$72.03 <sup>+GST</sup>

7400-34X25	34mm x 25mm DEEP	\$60.23 <sup>+GST</sup>
7400-34X50	34mm x 50mm DEEP	\$75.11 <sup>+GST</sup>
7400-35X25	35mm x 25mm DEEP	\$61.76 <sup>+GST</sup>
7400-35X50	35mm x 50mm DEEP	\$79.10 <sup>+GST</sup>
7400-36X25	36mm x 25mm DEEP	\$64.96 <sup>+GST</sup>
7400-36X50	36mm x 50mm DEEP	\$81.35 <sup>+GST</sup>
7400-37X25	37mm x 25mm DEEP	\$67.30 <sup>+GST</sup>
7400-37X50	37mm x 50mm DEEP	\$87.93 <sup>+GST</sup>
7400-38X25	38mm x 25mm DEEP	\$68.87 <sup>+GST</sup>
7400-38X50	38mm x 50mm DEEP	\$88.75 <sup>+GST</sup>
7400-39X25	39mm x 25mm DEEP	\$70.46 <sup>+GST</sup>
7400-39X50	39mm x 50mm DEEP	\$92.87 <sup>+GST</sup>
7400-40X25	40mm x 25mm DEEP	\$72.81 <sup>+GST</sup>
7400-40X50	40mm x 50mm DEEP	\$97.79 <sup>+GST</sup>
7400-41X25	41mm x 25mm DEEP	\$75.89 <sup>+GST</sup>
7400-41X50	41mm x 50mm DEEP	\$101.90 <sup>+GST</sup>
7400-42X25	42mm x 25mm DEEP	\$81.35 <sup>+GST</sup>
7400-42X50	42mm x 50mm DEEP	\$106.83 <sup>+GST</sup>
7400-43X25	43mm x 25mm DEEP	\$86.28 <sup>+GST</sup>
7400-43X50	43mm x 50mm DEEP	\$110.93 <sup>+GST</sup>
7400-44X25	44mm x 25mm DEEP	\$92.87 <sup>+GST</sup>
7400-44X50	44mm x 50mm DEEP	\$110.93 <sup>+GST</sup>
7400-45X25	45mm x 25mm DEEP	\$92.87 <sup>+GST</sup>
7400-45X50	45mm x 50mm DEEP	\$115.04 <sup>+GST</sup>
7400-46X25	46mm x 25mm DEEP	\$97.79 <sup>+GST</sup>
7400-46X50	46mm x 50mm DEEP	\$119.98 <sup>+GST</sup>
7400-47X25	47mm x 25mm DEEP	\$101.90 <sup>+GST</sup>
7400-47X50	47mm x 50mm DEEP	\$133.12 <sup>+GST</sup>
7400-48X25	48mm x 25mm DEEP	\$106.83 <sup>+GST</sup>
7400-48X50	48mm x 50mm DEEP	\$137.23 <sup>+GST</sup>
7400-49X25	49mm x 25mm DEEP	\$106.83 <sup>+GST</sup>
7400-49X50	49mm x 50mm DEEP	\$142.17 <sup>+GST</sup>
7400-50X25	50mm x 25mm DEEP	\$115.04 <sup>+GST</sup>
7400-50X50	50mm x 50mm DEEP	\$146.28 <sup>+GST</sup>
7400-51X25	51mm x 25mm DEEP	\$119.98 <sup>+GST</sup>
7400-51X50	51mm x 50mm DEEP	\$151.20 <sup>+GST</sup>
7400-52X25	52mm x 25mm DEEP	\$119.98 <sup>+GST</sup>
7400-52X50	52mm x 50mm DEEP	\$155.31 <sup>+GST</sup>
7400-55X50	55mm x 50mm DEEP	\$159.42 <sup>+GST</sup>



## SLOT DRILL SCREWED SHANK



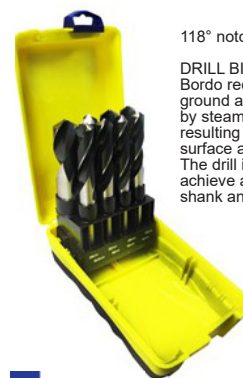
6006-10.00S	10mm SHORT SERIES	\$22.96 <sup>+GST</sup>	6006-4.00S	4mm SHORT SERIES	\$14.79 <sup>+GST</sup>
6006-12.00S	12mm SHORT SERIES	\$23.80 <sup>+GST</sup>	6006-5.00S	5mm SHORT SERIES	\$14.79 <sup>+GST</sup>
6006-14.00S	14mm SHORT SERIES	\$27.17 <sup>+GST</sup>	6006-6.00S	6mm SHORT SERIES	\$17.40 <sup>+GST</sup>
6006-3.00S	3mm SHORT SERIES	\$17.40 <sup>+GST</sup>	6006-8.00S	8mm SHORT SERIES	\$22.47 <sup>+GST</sup>

## BORDO 1/2" REDUCED SHANK



2654-13.50	13.50mm	\$24.77 <sup>+GST</sup>
2654-14.00	14.00mm	\$24.77 <sup>+GST</sup>
2654-14.50	14.50mm	\$24.77 <sup>+GST</sup>
2654-15.00	15.00mm	\$27.16 <sup>+GST</sup>
2654-15.50	15.50mm	\$27.16 <sup>+GST</sup>
2654-16.00	16.00mm	\$27.16 <sup>+GST</sup>
2654-16.50	16.50mm	\$30.69 <sup>+GST</sup>
2654-17.00	17.00mm	\$30.69 <sup>+GST</sup>
2654-17.50	17.50mm	\$31.82 <sup>+GST</sup>
2654-18.00	18.00mm	\$31.82 <sup>+GST</sup>
2654-18.50	18.50mm	\$33.15 <sup>+GST</sup>
2654-19.00	19.00mm	\$33.15 <sup>+GST</sup>
2654-19.50	19.50mm	\$37.80 <sup>+GST</sup>
2654-20.00	20.00mm	\$37.80 <sup>+GST</sup>
2654-20.50	20.50mm	\$39.09 <sup>+GST</sup>
2654-21.00	21.00mm	\$40.70 <sup>+GST</sup>
2654-22.00	22.00mm	\$40.70 <sup>+GST</sup>
2654-23.00	23.00mm	\$47.08 <sup>+GST</sup>
2654-24.00	24.00mm	\$51.93 <sup>+GST</sup>
2654-25.00	25.00mm	\$51.93 <sup>+GST</sup>

## BORDO 1/2" REDUCED SHANK METRIC DRILL SET 8 PCE 14,15,16,16.5,18,20,22,25mm



118° notched point 30° helix

**DRILL BIT SURFACE TREATMENT**  
Bordo reduced shank HSS drills are ground and then a black finish is achieved by steam tempering, a thermal process resulting in a porous tool coating. This surface aids chip flow and heat dissipation. The drill is then ground a second time to achieve a bright finish on the shank and cutting edges.

CONTAINS:  
2654-14.00 14mm 1/2"  
2654-15.00 15mm 1/2"  
2654-16.00 16mm 1/2"  
2654-16.50 16.5mm 1/2"  
2654-18.00 18mm 1/2"  
2654-20.00 20mm 1/2"  
2654-22.00 22mm 1/2"  
2654-25.00 25mm 1/2"



2654-S2 \$249.36<sup>+GST</sup>

## BORDO 1/2" REDUCED SHANK METRIC DRILL SET 16, 18, 22, 25mm - 4PCE



CONTAINS:  
654-16.00 - 16mm 1/2"  
2654-18.00 - 18mm 1/2"  
2654-22.00 - 22mm 1/2"  
2654-25.00 - 25mm 1/2"

2654-S1 \$161.19<sup>+GST</sup>

**BLU-MOL 5 PCE ANNULAR CUTTER SET**

12,14,18,22mm (30mm Deep) + PIN



**FREE BONUS!**

**BLU-MOL**

BL390-S1  
BL280-S1  
BLU-MOL EXTRACTOR SET \$121.43+GST  
**FREE**

**BLU-MOL EXTRACTOR 6 PCE SET**

> 3mm -22mm  
> Quality Steel



**BLU-MOL**

BL280-S1 \$9.29+GST

**3 PCE CARBIDE BURR SET 3/8" O.D. (SB3,SC3,SF3) CLAM**

> 3mm -22mm  
> Quality Steel

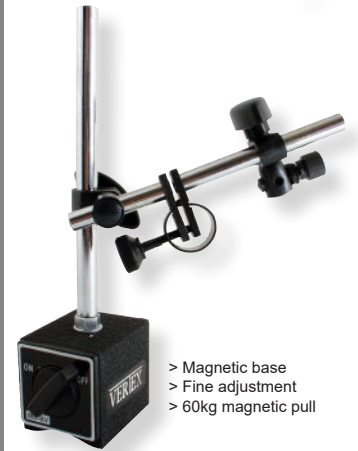


**BLU-MOL**

BL360-S3 \$50.00+GST

**BLU-MOL VERTEX MAGNETIC BASE AND ARM**

**BLU-MOL VERIEX**



> Magnetic base  
> Fine adjustment  
> 60kg magnetic pull

M329 \$33.63+GST

**BLU-MOL VERTEX OUTSIDE MICROMETER**

**BLU-MOL VERIEX**



M350 0-1" \$38.39+GST  
M332 0-25mm \$38.39+GST  
M333 25-50mm \$41.46+GST

**BLU-MOL VERTEX VERNIER**

**BLU-MOL VERIEX**



M400 150mm/6" CARBON \$19.50+GST  
M402 200mm/8" CARBON \$28.26+GST  
M500 150mm/6" SS \$33.63+GST

**BLU-MOL VERTEX ELECTRONIC VERNIER**

**BLU-MOL VERIEX**



M701 200mm/8" \$75.25+GST  
M720 150mm/6" \$22.27+GST

**BLU-MOL VERTEX DIAL GAUGE 0-10mm WITH LUG BACK**

**BLU-MOL VERIEX**



M339A \$33.63+GST

**BLU-MOL VERTEX COMBINATION SQUARE SET METRIC**

**BLU-MOL VERIEX**



M404 \$86.77+GST

**BLU-MOL VERTEX ELECTRONIC VERNIER**

**BLU-MOL VERIEX**



M700 150mm/6" \$47.61+GST  
M701 200mm/8" \$75.25+GST

**BLU-MOL PLASTIC ELECTRONIC VERNIER 150mm/6"**

**FREE BONUS!**



**BLU-MOL**

M720 \$22.27+GST  
BLU-MOL VERTEX LESS STEEL RULE R302V 12"/300MM  
R301V 6"/150MM **FREE**

**BLU-MOL VERTEX STAINLESS STEEL RULE**

**BLU-MOL VERIEX**



R301V 6"/150MM \$3.23+GST  
R302V 12"/300MM \$6.91+GST  
R303V 24"/600MM \$26.11+GST

**BLU-MOL SPIRAL FLUTE STEP DRILL 3PCE SET**

4-12mm, 4-20mm and 4-30mm 5mm step depths with engraved depth guide M2 High Speed Steel CBN fully ground for sharpe edge Split point to reduce walking Spiral flute for easie swarf removal



**BLU-MOL**

BL234-S1 \$152.04+GST

**BLU-MOL 5PCE CARBIDE BURR SET 1/4" SHANK**

**FREE BONUS!**

(SB3, SC3, SC5, SF3, SF5)

3/8" Cylindrical End Cut  
3/8" Cylindrical Ball  
1/2" Cylindrical Ball  
3/8" Tree radius  
1/2" Tree radius



BL360-S1 \$121.32+GST  
BL420-S2 **FREE**  
BLU-MOL FILE SET 5 PCE

**BLU-MOL 3 PCE COUNTERSINK SET 90DEG (20.5, 25, 31mm)**

> 3 flute design  
> 90 degree point angle  
> 5% cobalt HSS (M35)  
> Bright finish  
> Straight round shank  
> Suitable for:  
Non-ferrous  
Metal, Stainless steel, Thermoplastic, Duroplastic, Sheet metal



BL370-CSK01 \$94.06+GST

**BLU-MOL 3 PCE COUNTERSINK SET 90DEG (10, 14, 20.5mm)**

> 3 flute design  
> 90 degree point angle  
> 5% cobalt HSS (M35)  
> Bright finish  
> Straight round shank  
> Suitable for:  
Non-ferrous metal, Stainless steel, Thermoplastic, Duroplastic, Sheet metal



BL370-CSK02 \$58.66+GST

**BLU-MOL 6PCE COUNTERSINK SET 90DEG (6, 8, 10, 12, 16, 20.5mm)**

> 3 flute design  
> 90 degree point angle  
> 5% cobalt HSS (M35)  
> Bright finish  
> Straight round shank  
> Suitable for:  
Non-ferrous metal, Stainless steel, Thermoplastic, Duroplastic, Sheet metal



BL370-CSK03 \$97.67+GST

**BLU-MOL ELECT. LARGE SCREEN VERNIER 150mm / 6"**



**X3 FREE BONUS!**

**BLU-MOL**

M780 \$73.71+GST  
BLU-MOL - VERTEX STAINLESS STEEL RULE R303V 24"/600MM, R302V 12"/300MM  
R301V 6"/150MM **FREE**

**BLU-MOL CARBIDE COUNTERSINK**

Carbide Tipped for better surface finish, Adjustable depth stop, Non-marking, Low friction depth stop, Best suited for natural woods and MDF, chipboard and plywood, Designed for power drills, cordless drill and stationery drills.

BL350-3.00 3.00mm \$59.40+GST  
BL350-3.50 3.50mm \$59.40+GST  
BL350-4.00 4.00mm \$59.40+GST  
BL350-5.00 5.00mm \$59.40+GST

**BLU-MOL**



## BLU-MOL BURR CARBIDE



BL360-SC5M	DIA 1/2" CYL/RAD 6mm SHANK (SC5)	\$39.36+GST
BL360-SF1M	DIA 1/4" TREE RADIUS END 6mm SHANK (SF1)	\$19.08+GST
BL360-SF3	DIA 3/8" TREE RADIUS END 1/4" SHANK (SF3)	\$24.67+GST
BL360-SA1M	DIA 1/4" CYL 6mm SHANK (SA1)	\$15.37+GST
BL360-SA3M	DIA 3/8" CYL 6mm SHANK (SA3)	\$26.69+GST
BL360-SA5M	DIA 1/2" CYL 6mm SHANK (SA5)	\$40.57+GST
BL360-SB3	DIA 3/8" CYL/END CUT 1/4 SHANK (SB3)	\$24.67+GST
BL360-SB3M	DIA 3/8" CYL/ END CUT 6mm SHANK (SB3M)	\$24.67+GST
BL360-SC1M	DIA 1/4" CYL/RAD 6mm SHANK (SC1)	\$17.51+GST
BL360-SC3	DIA 3/8" CYL/RAD 1/4" SHANK (SC3)	\$24.67+GST
BL360-SC3M	DIA 3/8" CYL/RAD 6mm SHANK (SC3)	\$26.12+GST
BL360-SC5	DIA 1/2" CYL/RAD 1/4" SHANK (SC5)	\$34.56+GST
BL360-SF3M	DIA 3/8" TREE RADIUS END 6mm SHANK (SF3)	\$27.06+GST
BL360-SF5	DIA 1/2" TREE RADIUS END 1/4" SHANK (SF5)	\$34.56+GST
BL360-SF5M	DIA 1/2" TREE RADIUS END 6mm SHANK (SF5)	\$41.14+GST
BL360-SH1M	DIA 1/4" FLAME 6mm SHANK (SH1)	\$14.38+GST
BL360-SH2M	DIA 5/16" FLAME 6mm SHANK (SH2)	\$26.12+GST
BL360-SH5M	DIA 1/2" FLAME 6mm SHANK (SH5)	\$39.72+GST

## BLU-MOL RECIPROCATING BLADES



BL6958-5T	9X14TPI DEMOLITION (5PK) DEMO	\$31.52+GST
BL6475-5T	WOOD/MTL 6X14TPI 150MM (5PK)	\$13.87+GST
BL6476-5T	6X18TPI METAL CUT (5PK)	\$13.73+GST
BL6477-5T	6X24TPI METAL CUT (5PK)	\$13.87+GST
BL6479-5T	WOOD/MTL 8 X 10TPI 200MM (5PK)	\$19.28+GST
BL6480-5T	WOOD/MTL 6" X6TPI 150MM (5PK)	\$17.09+GST
BL6482-5T	9X6TPI EMBED W/C (5PK)	\$25.42+GST
BL6483-5T	12X6TPI EMBED W/C (5PK)	\$29.08+GST
BL6958-5T	9X14TPI DEMOLITION (5PK) demo	\$31.52+GST
BL6960-5T	WOOD/MTL 12X10/14TPI 300MM (5PK)	\$26.64+GST
BL6961-5T	METAL 8X18TPI 200MM (5PK)	\$17.41+GST
BL6400-S1	MULTI-PAK ASSORTED BLADES (8 PCE)	\$35.47+GST

## BLU-MOL XTREME RECIPROCATING BLADES



BLXT-S1	4 PCE MULTI-PAK	\$35.37+GST
BLXT-S2	8 PCE MULTI-PAK	\$62.54+GST
BL-SET01	5 PCE SET (MULTI PACK, ASSORTED BLADES)	\$29.00+GST
BLXT1214-2T	12X14T (2 Pack)	\$21.35+GST
BLXT126-2T	12X6T (2 Pack)	\$21.35+GST
BLXT614-2T	6X14T (2 Pack)	\$12.39+GST
BLXT66-2T	6X6T (2 PACK)	\$11.77+GST
BLXT914-2T	9X14T (2 Pack)	\$16.59+GST
BLXT96-2T	9X6T (2 Pack)	\$16.59+GST

## BLU-MOL XTREME IMPACT



BLX265-SR2X50S	BIT SQUARE No.2 x 50mm (2PK CLAM)	\$4.13+GST
BLX252-PH2X25S	INSERT BIT PHILLIPS No.2 x 25mm (2 PK CLAM)	\$1.82+GST
BLX252-PZ2X25S	INSERT BIT POZI No.2 x 25mm (2 PK CLAM)	\$1.82+GST
BLX252-SR1X25S	INSERT BIT SQUARE No.1 x 25mm (2 PK CLAM)	\$2.16+GST
BLX252-SR2X25S	INSERT BIT SQUARE No.2 x 25mm (2 PK CLAM)	\$2.16+GST
BLX265-HX5X50S	BIT HEX 5mm x 50mm (2PK CLAM)	\$3.35+GST
BLX265-HX5X50TP	BIT HEX 5mm x 50mm (10PK CLAM)	\$13.31+GST
BLX265-PH1X50S	BIT PHILLIPS No.1 x 50mm (2PK CLAM)	\$2.55+GST
BLX265-PH2X50TP	BIT PHILLIPS No.2 x 50mm (10PK CLAM)	\$12.80+GST
BLX265-PZ1X50S	BIT POZI No.1 x 50mm (2 PK CLAM)	\$2.88+GST
BLX265-SL5X50S	BIT SLOTTED 5mm x 50mm (2 PK CLAM)	\$3.02+GST
BLX265-SL8X50S	BIT SLOTTED 8mm x 50mm (2 PK CLAM)	\$3.55+GST
BLX265-SR3X50S	BIT SQUARE No.3 x 50mm (2PK CLAM)	\$4.37+GST
BLX265-TX20X50S	BIT TORX T20 x 50mm (SGL CLAM)	\$3.58+GST
BLX265-TX25X50S	BIT TORX T25 x 50mm (SGL CLAM)	\$3.58+GST
BLX265-TX27X50S	BIT TORX T27x50mm (SGL)	\$3.58+GST
BLX275-NS1/4X65S	NUTSETTER 1/4" x 65mm (SGL CLAM)	\$4.38+GST
BLX275-NS3/8X150S	NUTSETTER 3/8" x 150mm (SGL CLAM)	\$9.86+GST
BLX275-SET1	NUTSETTER SET (2 PCE) - 5/16" & 3/8" x 65mm	\$8.56+GST
BLX285-SD1/2X50S	BIT SOCKET ADAPTOR 1/2" x 50mm (CLAM)	\$4.01+GST
BLX285-SD1/4X50S	BIT SOCKET ADAPTOR 1/4" x 50mm (CLAM)	\$2.16+GST
BLX285-SD3/8X50S	BIT SOCKET ADAPTOR 3/8" x 50mm (CLAM)	\$3.11+GST
BLX286-MH1/4X75S	BIT HOLDER MAGNETIC 1/4" x 75mm (SGL CLAM)	\$6.17+GST
BLX288-PH2DWX25S	INSERT BIT PHILLIPS No.2 x 25mm PLASTERBOARD (2PK CLAM)	\$3.95+GST
BLX288-PH2DX100S	BIT DOUBLE END PHILLIPS No.2 x 100mm (SGL CLAM)	\$2.23+GST
BLX288-PH2DX65S	BIT DOUBLE END PHILLIPS No.2 x 65mm (SGL CLAM)	\$2.23+GST
BLX288-SR2DX45S	BIT DOUBLE END SQUARE No.2 x 45mm (2PK CLAM)	\$4.90+GST
BLX288-SR2DX65S	BIT DOUBLE END SQUARE No.2 x 65mm (SGL CLAM)	\$3.02+GST

## BLU-MOL QC IMPACT DRILL BITS SINGLE PACKS



BLX285-2.50	2.50mm	\$2.55+GST
BLX285-3.00	3.00mm	\$2.96+GST
BLX285-3.50	3.50mm	\$3.12+GST
BLX285-4.00	4.00mm	\$3.28+GST
BLX285-5.00	5.00mm	\$4.73+GST
BLX285-6.00	6.00mm	\$5.67+GST

## BLU-MOL XTREME 20 PCE IMPACT DRILL, QC EXT AND POWER BIT SET



- > 6 x impact drills: 2.5mm, 3mm, 3.5mm, 4mm, 5mm & 6mm
- > 5 x impact bits (25mm long): TX15, TX20, TX25, PH2, SQ2
- > 6 x impact bits (50mm long): PH2, PZ2, SR1, SR2, HX5, SL5
- > 2 x magnetic nutsetters (65mm long): 3/8" and 5/16"
- > 1 x quick change adaptor 1/4" shank (60mm long)

BLX290-S2	\$43.24+GST
-----------	-------------



**BLU-MOL XTREME QUICKCORE BI-METAL HOLE SAW**



BLXQC016-0234	16MM (5/8")	\$12.29 <sup>+GST</sup>
BLXQC019-0200	19MM (3/4")	\$12.54 <sup>+GST</sup>
BLXQC020-0235	20MM	\$12.54 <sup>+GST</sup>
BLXQC022-0201	22MM (7/8")	\$13.14 <sup>+GST</sup>
BLXQC025-0202	25MM (1")	\$13.77 <sup>+GST</sup>
BLXQC029-0203	29MM (1.1/8")	\$15.63 <sup>+GST</sup>
BLXQC030-0236	30MM (1.3/16")	\$15.84 <sup>+GST</sup>
BLXQC032-0204	32MM (1.1/4")	\$16.30 <sup>+GST</sup>
BLXQC035-0205	35MM (1.3/8")	\$17.99 <sup>+GST</sup>
BLXQC038-0206	38MM (1.1/2")	\$18.75 <sup>+GST</sup>
BLXQC040-0237	40MM (1.9/16")	\$20.39 <sup>+GST</sup>
BLXQC041-0207	41MM (1.5/8")	\$20.41 <sup>+GST</sup>
BLXQC044-0208	44MM (1.3/4")	\$20.65 <sup>+GST</sup>
BLXQC048-0209	48MM (1.7/8")	\$21.46 <sup>+GST</sup>
BLXQC051-0210	51MM (2")	\$21.46 <sup>+GST</sup>
BLXQC054-0211	54MM (2.1/8")	\$22.41 <sup>+GST</sup>
BLXQC057-0212	57MM (2.1/4")	\$23.74 <sup>+GST</sup>
BLXQC060-0213	60MM (2.3/8")	\$24.38 <sup>+GST</sup>
BLXQC064-0214	64MM (2.1/2")	\$25.05 <sup>+GST</sup>
BLXQC070-0215	70MM (2.3/4")	\$29.82 <sup>+GST</sup>
BLXQC073-0216	73MM (2.7/8")	\$30.66 <sup>+GST</sup>
BLXQC076-0217	76MM (3")	\$31.23 <sup>+GST</sup>
BLXQC083-0218	83MM (3.1/4")	\$33.26 <sup>+GST</sup>
BLXQC089-0219	89MM (3.1/2")	\$34.42 <sup>+GST</sup>
BLXQC102-0220	102MM (4")	\$40.95 <sup>+GST</sup>
BLXQC108-0221	108MM (4.1/4")	\$44.93 <sup>+GST</sup>
BLXQC114-0222	114MM (4.1/2")	\$47.49 <sup>+GST</sup>
BLXQC127-0223	127MM (5")	\$55.78 <sup>+GST</sup>
BLXQC133-0224	133MM (5.1/4")	\$56.55 <sup>+GST</sup>
BLXQC140-0225	140MM (5.1/2")	\$59.07 <sup>+GST</sup>
BLXQC146-0226	146MM (5.3/4")	\$63.69 <sup>+GST</sup>
BLXQC152-0227	152MM (6")	\$63.69 <sup>+GST</sup>

**BLUMOL XTREME THINWALL HOLESAW NEW**



BLX6916	16MM (5/8")	\$25.14 <sup>+GST</sup>
BLX6919	19MM (3/4")	\$25.14 <sup>+GST</sup>
BLX6922	22MM (7/8")	\$26.34 <sup>+GST</sup>
BLX6925	25MM (1")	\$26.34 <sup>+GST</sup>
BLX6929	29MM (1.1/8")	\$26.97 <sup>+GST</sup>
BLX6932	32MM (1.1/4")	\$27.54 <sup>+GST</sup>
BLX6935	35MM (1.3/8")	\$28.74 <sup>+GST</sup>
BLX6938	38MM (1.1/2")	\$28.74 <sup>+GST</sup>

**BLUMOL XTREME THIN WALL HOLESAW SET 3-PACK NEW (19mm, 25mm, 32mm)**

Thin (0.5mm) blade thickness which allows for faster cutting and longer blade life. - M42 material. - 8tpi tooth design for smoother cuts in sheet metal. - Self ejecting plug removal. 1/4" quick change shank - Safety collar to help prevent cutting too deep. - Use in thin applications of mild steel, brass, aluminium, stainless steel or plastic.



BLX69P3-S1 \$74.97<sup>+GST</sup>



**BLU-MOL XTREME QUICKCORE CARBIDE-3 TOOTH - TIPPED TCT HOLE SAW NEW**



BLXQCT102-0191	102mm 4"	\$41.57 <sup>+GST</sup>
BLXQCT114-0194	114mm 4-1/2"	\$53.75 <sup>+GST</sup>
BLXQCT127-0195	127mm 5"	\$54.71 <sup>+GST</sup>
BLXQCT152-0196	152mm 6"	\$65.09 <sup>+GST</sup>
BLXQCT25-0171	25mm 1"	\$17.69 <sup>+GST</sup>
BLXQCT32-0173	32mm 1-1/4"	\$19.13 <sup>+GST</sup>
BLXQCT35-0174	35mm 1-3/8"	\$19.37 <sup>+GST</sup>
BLXQCT38-0175	38mm 1-1/2"	\$20.90 <sup>+GST</sup>
BLXQCT41-0176	41mm 1-5/8"	\$22.37 <sup>+GST</sup>
BLXQCT44-0177	44mm 1-3/4"	\$22.53 <sup>+GST</sup>
BLXQCT51-0179	51mm 2"	\$24.26 <sup>+GST</sup>
BLXQCT54-0180	54mm 2-1/8"	\$27.17 <sup>+GST</sup>
BLXQCT57-0181	57mm 2-1/4"	\$27.34 <sup>+GST</sup>
BLXQCT60-0182	60mm 2-3/8"	\$27.52 <sup>+GST</sup>
BLXQCT64-0183	64mm 2-1/2"	\$28.35 <sup>+GST</sup>
BLXQCT70-0186	70mm 2-3/4"	\$30.30 <sup>+GST</sup>
BLXQCT76-0187	76mm 3"	\$33.47 <sup>+GST</sup>
BLXQCT83-0188	83mm 3-1/4"	\$34.43 <sup>+GST</sup>
BLXQCT89-0189	89mm 3-1/2"	\$36.16 <sup>+GST</sup>
BLXQCT92-0190	92mm 3-5/8"	\$36.94 <sup>+GST</sup>

**BLU MOL XTREME QUICKCORE CARBIDE PILOT DRILL BIT - TCT HOLE SAW NEW**



BLXQCT0168 \$7.91<sup>+GST</sup>

**BLU-MOL XTREME QUICKCORE MANDREL ASSEMBLY 3/8" SHANK NEW**

- > For exclusive use with BLU-MOL XTREME QUICK CORE hole saws
- > This mandrel fits all QUICK CORE hole saws
- > Change out hole saws FAST without the use of any tools
- > Up to 10x faster core ejection
- > 10mm (3/8) Hex Shank



BLXQC0228 \$52.07<sup>+GST</sup>

**BLU-MOL XTREME QUICKCORE MANDREL ASSEMBLY 7/16" SHANK NEW**

- > For exclusive use with BLU-MOL XTREME QUICK CORE hole saws
- > This mandrel fits all QUICK CORE hole saws
- > Change out hole saws FAST without the use of any tools
- > Up to 10x faster core ejection
- > 11mm (7/16) Hex Shank



BLXQC0229 \$52.07<sup>+GST</sup>

**BLU-MOL XTREME QUICKCORE PILOT DRILL 1/4" NEW**

- > For exclusive use with BLU-MOL XTREME QUICK CORE hole saws
- > This pilot drill fits all QUICK CORE hole saw mandrels
- > 6mm (1/4") pilot drill diameter



BLXQC0230 \$8.53<sup>+GST</sup>

**BLU-MOL XTREME QUICKCORE UNIVERSAL ADAPTER NEW**

- > Converts conventional hole saws to the BLU-MOL Xtreme Quick Core quick release system using the Quick Core universal adaptor.
- > Adaptor set includes 1 adaptor, 2x M8 Button head screws- 4mm Hex Key, 1x1/4" X 4-5/5" Pilot Drill



BLXQC0232 \$11.94<sup>+GST</sup>



### BLU-MOL QUICKCORE BIMETAL HOLESAW 4 PCE SET 25/40

4 PCE set includes:  
 25mm Hole Saw  
 40mm Hole Saw  
 QuickCore Mandrel  
 Pilot drill BLU-MOL QuickCore holesaws eliminate the #1 operator issue with hole saws – the core / plug removal.



BLXQC0253-S2

\$89.83+GST

### BLU-MOL QUICKCORE BIMETAL HOLESAW 4 PCE SET 38/54

4 PCE set includes:  
 38mm Hole Saw  
 54mm Hole Saw  
 QuickCore Mandrel  
 Pilot drill

BLU-MOL QuickCore holesaws eliminate the #1 operator issue with hole saws – the core / plug removal.



BLXQC0254-S2

\$93.26+GST

### BLU-MOL XTREME QUICKCORE ELECTRICAL 13PC SET

Contains: 20MM, 22MM, 25MM, 32MM, 35MM, 40MM, 51MM, 60MM, 64MM, 1 x QC MANDREL, 2 x Pilot Drills, 1 x Hex Key

> 1-7/8 depth of cut  
 > M42/Cobalt material  
 > Quick change sleeve with 3 pin locking system  
 > 10 degree positive tooth angle  
 > For use with the QuickCore Hole Saw System



BLXQC0238-S1

\$281.40+GST

### BLU-MOL XTREME QUICKCORE BUILDERS 13 PCE SET

Contains: 22MM, 25MM, 32MM, 35MM, 38MM, 44MM, 51MM, 54MM, 64MM, 1 x QC MANDREL, 2 x Pilot Drills, 1 x Hex Key

> 1-7/8 depth of cut  
 > M42/Cobalt material  
 > Quick change sleeve with 3 pin locking system  
 > 10 degree positive tooth angle  
 > For use with the QuickCore Hole Saw System



BLXQC0239-S1

\$281.40+GST

### BLUMOL XTREME QUICKCORE TCT 13 PCE SET

Contains:  
 > (25,32,35,38,44,51,54,60,64mm),  
 > 1X 11MM MANDREL,  
 > 2X PILOT DRILL (HSS& TCT),  
 > 1X HEX KEY



BLXQC0199-S2

\$278.91+GST

### BLU-MOL XTREME HOLE ENLARGER TOOL, 52 - 92MM

**NEW**

> Re-cut a larger hole using a new hole saw size.  
 > Any hole between 52mm and 92mm can be enlarged.  
 > Min. Starting Hole: 52  
 > Max. Enlargement: 92mm  
 > Min. Enlargement: 12mm  
 > Suits all standard hole saws.  
 > Pilot drill guide hole suits pilot drills: 6, 6.35, 7mm



BLXHE-92

\$39.29+GST

### BLU-MOL XTREME BI-METAL HOLE SAW KIT 9 PCE 16-51mm (ELECTRICIANS)



**FREE BONUS**  
 BLU-MOL SPEAKER ND-F65 While stocks last!!!

> 6 bi-metal hole saws: 16, 20, 25, 32, 40 & 51mm  
 > Mandrels 5545 & 5514  
 > Mandrel adaptor 5511



BL9593M

\$136.68+GST

ND-F65 BLUMOL SPEAKER

FREE

### BLU-MOL XTREME BI-METAL HOLE SAW KIT 9 PCE 16-40mm



**FREE BONUS**  
 BLU-MOL SPEAKER ND-F65 While stocks last!!!

> Contains: 16mm, 20mm, 22mm, 25mm, 32mm., 35mm, 40mm  
 > 2 x hex shank mandrels  
 > 48mm depth of cut  
 > Thin kerf design - 0.44 thick  
 > Solid steel backing plate  
 > Patented Cat-eye for increased visibility



BL9594M

\$102.89+GST

ND-F65 BLUMOL SPEAKER

FREE

### BLU-MOL XTREME ELECTRICIANS HOLESAW KIT



**FREE BONUS**  
 BLU-MOL SPEAKER ND-F65 While stocks last!!!

> 9 bi-metal hole saws: 16, 20, 22, 25, 32, 40, 50, 57 & 64mm  
 > 2 X Mandrels  
 > Mandrel adaptor  
 > Pilot drill



BLX9596M

\$198.11+GST

ND-F65 BLUMOL SPEAKER

FREE

### BLU-MOL XTREME QUICK CHANGE HOLE SAW KIT 11 PCE 16-60mm



**FREE BONUS**  
 BLU-MOL SPEAKER ND-F65 While stocks last!!!

> Quick change set  
 > 9 bi-metal hole saws: 16, 20, 22, 25, 32, 40, 51, 54 & 60mm  
 > Mandrels 5512 & 5558  
 > Pilot drill  
 > Power-hex adaptor



BLX7065-S1

\$238.04+GST

ND-F65 BLUMOL SPEAKER

FREE

### BLU-MOL TCT HOLE SAW KIT 8 PCE



**FREE BONUS**  
 BLU-MOL SPEAKER ND-F65 While stocks last!!!

> Contains: 6 x TCT Hole saws, 2 x mandrels



BLTCT-S1

\$109.94+GST

ND-F65 BLUMOL SPEAKER

FREE

### BLU-MOL QUICK CHANGE TCT HOLE SAW KIT 11 PCE



**FREE BONUS**  
 BLU-MOL SPEAKER ND-F65 While stocks last!!!

> Contains: 9 x Ripper Hole saws, Quick connect adaptor, TCT pilot drill.



BLTCT7065-S1

\$153.26+GST

ND-F65 BLUMOL SPEAKER

FREE



**BLU-MOL 11 PCE DRILL SET**

**BLU-MOL®**



- > 1-6mm x 0.5mm rises
- > 118° split point
- > Ideal for cutting metal, wood and plastic

BL-M1 \$20.73+GST

**BLU-MOL 19 PCE DRILL SET**

**BLU-MOL®**



- > 1-10mm x 0.5mm rises
- > 118° split point
- > Ideal for cutting metal, wood and plastic

BL-M2 \$45.30+GST

**BLU-MOL 25 PCE DRILL SET**

**BLU-MOL®**



- > 1-13mm x 0.5mm rises
- > 118° split point
- > Ideal for cutting metal, wood and plastic

BL-M3 \$91.38+GST

**BLU-MOL XTREME 16 PCE SPADE BIT, QUADMAX AND SCREWDRIVER BIT SET**

**BLU-MOL XTREME**



- > 16pce set
- > 3 x spade bits: 10mm, 13mm & 16mm
- > 3 x Quad Max wood borer: 16mm, 20mm & 25mm
- > 9 x impact drive bits (50mm & 100mm long): Square No.1, Square No.2, Phillips No.2, Pozi No.2, Hex No.5 (50mm length only)
- > 1 x 150mm (6") quick change extension

BLX290-S1 \$72.68+GST

**BLU-MOL PEIN HAMMERS**

**BLU-MOL®**



H328	4oz	\$9.57+GST
H330	8oz	\$12.36+GST
H332	12oz	\$12.36+GST
H334	16oz	\$13.98+GST
H336	24oz	\$18.81+GST
H338	32oz	\$19.89+GST
H340	40oz	\$20.96+GST

**BLU-MOL CUT-OFF WHEEL**

**BLU-MOL®**



BL481-100X1.0X16	100 x 1.0 x 16mm	\$1.90+GST
BL481-100X2.5X16	100 x 2.5 x 16mm	\$1.06+GST
BL481-115X1.0X22	115 x 1.0 x 22mm	\$1.81+GST
BL481-115X2.5X22	115 x 2.5 x 22mm	\$2.35+GST
BL481-125X1.0X22	125 x 1.0 x 22mm	\$1.90+GST
BL481-125X2.5X22	125 x 2.5 x 22mm	\$2.61+GST
BL481-230X2.5X22	230 x 2.5 x 22mm	\$3.87+GST

**BLU-MOL 3 PCE THRU-TANG CHISEL SET 12,19,25mm**

**BLU-MOL®**



- > 3 Piece set includes; 12, 19 and 25mm" Chisels
- > Forged Steel Core
- > High impact strike cap transfers hammer force to blade.
- > Comfortable Ergonomic Shock Resistant Handle
- > Comes With Convenient Hardwearing Carry Case
- > Bevel edge for woodworking, carving, multi-purpose
- > Hardened steel blade provides excellent edge retention.

BLX484-S2 \$41.63+GST

**BLU-MOL GRINDING WHEEL**

**BLU-MOL®**



BL482-100X6X16	100 x 6 x 16mm	\$1.71+GST
BL482-115X6X22	115 x 6 x 22mm	\$2.19+GST
BL482-125X6X22	125 x 6 x 22mm	\$2.67+GST
BL482-230X6X22	230 x 6 x 22mm	\$6.89+GST

**BLU-MOL XTREME DIAMOND**

**BLU-MOL XTREME**



BLX580-105	DIAMOND CONTINUOUS 105 x 20/16mm	\$11.07+GST
BLX580-125	DIAMOND CONTINUOUS -125 x 22/20mm	\$15.35+GST
BLX581-105	DIAMOND TURBO 105 x 20/16mm	\$11.15+GST
BLX581-115	DIAMOND TURBO 115 x 22/20mm	\$11.92+GST
BLX581-125	DIAMOND TURBO 125 x 22/20mm	\$17.33+GST
BLX581-180	DIAMOND TURBO 180 x 25.4/22mm	\$27.83+GST
BLX582-105	DIAMOND SEGMENTED 105 x 16mm	\$12.87+GST
BLX582-125	DIAMOND SEGMENTED 125 x 22/20mm	\$18.73+GST
BLX582-180	DIAMOND SEGMENTED 180 x 25.4/22mm	\$30.80+GST

## BLU-MOL PROFESSIONAL CIRCULAR SAW BLADE

**BLU-MOL®**



> Trim and finish, Timber cutting blade, Diamond ground tungsten carbide teeth, Thin kerf, High durability, Precision balance hardened and tempered blade, Protective anti-corrosion coating, Suitable for mitre and table saws.

BL550-18424	184mm x 24T	\$12.19+GST
BL550-18424/40	184mm x 24T & 40T (2 PACK)	\$23.35+GST
BL550-18424-3	184mm x 24T (3 PACK)	\$38.07+GST
BL550-18440	184mm x 40T	\$15.34+GST
BL550-21024	210mm x 24T	\$15.68+GST
BL550-21040	210mm x 40T	\$21.17+GST
BL550-23530	235mm x 30T	\$23.29+GST
BL550-25424	254mm x 24T	\$32.64+GST
BL550-25440	254mm x 40T	\$35.75+GST
BL550-25460	254mm x 60T	\$40.36+GST
BL550-30540	305mm x 40T	\$49.96+GST
BL550-30560	305mm x 60T	\$62.86+GST
BL550-30580	305mm x 80T	\$64.20+GST

## BLU-MOL PROFESSIONAL MULTI CIRCULAR SAW BLADE

**BLU-MOL®**



> Multi use cutting including aluminium, Diamond ground tungsten carbide teeth, Thin kerf design, High durability, Precision balanced hardened and tempered blade, Protective anti-corrosion coating, Suitable for handheld saws.

BL560-18460	184mm x 60T	\$39.78+GST
BL560-21660	216mm x 60T	\$46.00+GST
BL560-23580	235mm x 80T	\$59.42+GST
BL560-254100	254mm x 100T	\$80.26+GST
BL560-305100	305mm x 100T	\$119.22+GST

## BLU-MOL ULTRA CIRCULAR SAW BLADE

**BLU-MOL ULTRA**



> Trim and finish, Timber cutting blade, Trade quality, NANO anti-friction shield, Ultra thin kerf, K10<sup>2</sup> tungsten carbide teeth, Diamond ground carbide teeth, Precision hardened and tempered blade, Suitable for table or mitre saws.

BLU530-16040	160mm x 40T	\$25.97+GST
BLU530-16524	165mm x 24T	\$22.66+GST
BLU530-18424	184mm x 24T (CLAMED)	\$20.30+GST
BLU530-18424/40	84mm x 24T & 40T (2 PACK)	\$45.21+GST
BLU530-18424-2	184mm x 24T (2 PACK)	\$37.77+GST
BLU530-18440	184mm x 40T	\$24.64+GST
BLU530-21024	210mm x 24T	\$25.25+GST
BLU530-23520	235mm x 20T	\$28.74+GST
BLU530-25460	254mm x 60T	\$65.27+GST
BLU530-30540	305mm x 40T	\$78.91+GST
BLU530-30560	305mm x 60T	\$82.67+GST

## BLU-MOL ULTRA XTRA CIRCULAR SAW BLADES

**NEW**



> The new range BLU-MOL ULTRA XTRA range of timber cutting circular saw blades have been specifically designed & developed for cordless / battery circular saws, providing superior cutting performance with Ultra Xtra fast cut speeds and more cuts per battery charge when compared to standard 2.2mm kerf blades. Timber cutting Trim & Finish saw blade, Ideal for use with Cordless Circular Saws- Xtra 75% Faster cut speed\*, Xtra 75% Cuts per charge for extended battery use\*, Xtra thin kerf 1.45mm requires less power to achieve faster and smoother cuts, Tungsten Carbide Teeth for greater durability and stays sharper for longer Nano Anti Friction shield which helps reduce friction & protects the blade from corrosion, Inbuilt noise / heat reduction grooves for improved operator comfort and handling

BLUX530-16524	65MMX24T	\$28.20+GST
BLUX530-16548	165MMX48T	\$34.03+GST
BLUX530-18424	184MMX24T	\$25.52+GST
BLUX530-18440	184MMX40T	\$28.92+GST



**BLU-MOL FILE TOOL SET 5 PCE**  
8"/200mm ROUND/HALF ROUND/  
FLAT/SHARPENING/FLAT TAPER



**FREE BONUS!**

**BLU-MOL®**

BL420-S2 \$39.29+GST  
BLX265-SET1 **FREE**

**BLU-MOL FILE**  
8" x 3/16  
CHAINSAW  
(200X4.8mm)



**BLU-MOL®**

BL428-08-4.8 \$5.00+GST  
BL428-08-4.8 **FREE**

**BLU-MOL FILE**  
8" x 7/32  
CHAINSAW  
(200X5.5mm)



**BLU-MOL®**

BL428-08-5.5 \$5.00+GST  
BL428-08-5.5 **FREE**

**BLU-MOL FILE 6"**  
FLAT BASTARD  
SINGLE CUT (150mm)



**BLU-MOL®**

BL430-061 \$9.29+GST  
BL430-061 **FREE**

**BLU-MOL FILE 10"**  
FLAT BASTARD  
SINGLE CUT (250mm)



**BLU-MOL®**

BL430-101 \$12.14+GST  
BL430-101 **FREE**

**BLU-MOL FILE 6"**  
WARDING 2ND CUT  
(150mm)



**BLU-MOL®**

BL425-062 \$7.86+GST  
BL425-062 **FREE**

**BLU-MOL FILE 8"**  
FLAT SMOOTH CUT  
(200mm)



**BLU-MOL®**

BL430-083 \$9.29+GST  
BL430-083 **FREE**

**BLU-MOL FILE 10"**  
FLAT SMOOTH CUT  
(250mm)



**BLU-MOL®**

BL430-103 \$12.14+GST  
BL430-103 **FREE**

**BLU-MOL FILE 10"**  
FLAT 2ND CUT  
(250mm)



**BLU-MOL®**

BL430-102 \$11.43+GST  
BL430-102 **FREE**

**BLU-MOL FILE 6"**  
FLAT BASTARD CUT  
(150mm)



**BLU-MOL®**

BL430-062 \$9.29+GST  
BL430-062 **FREE**

**BLU-MOL FILE 8"**  
FLAT BASTARD  
2ND CUT (200mm)



**BLU-MOL®**

BL430-082 \$9.29+GST  
BL430-082 **FREE**



BLU-MOL FILE 6"  
ROUND 2ND CUT  
(150mm)

BUY ONE  
GET ONE  
FREE!



BLU-MOL®

BL438-062  
BL438-062

\$6.43+GST  
FREE

BLU-MOL FILE 6"  
TRIANGLE 2ND CUT  
(150mm)

BUY ONE  
GET ONE  
FREE!



BLU-MOL®

BL439-062  
BL439-062

\$7.86+GST  
FREE

BLU-MOL FILE 10"  
TRIANGLE 2ND CUT  
(250mm)

BUY ONE  
GET ONE  
FREE!



BLU-MOL®

BL439-102  
BL439-102

\$12.86+GST  
FREE

BLU-MOL FILE 8"  
SHARPENING  
BASTARD (200mm)



BLU-MOL®

BL426-081  
BL426-081

\$9.29+GST  
FREE

BLU-MOL FILE 6"  
SQUARE BASTARD  
CUT (150mm)

BUY ONE  
GET ONE  
FREE!



BLU-MOL®

BL442-061  
BL442-061

\$8.57+GST  
FREE

BLU-MOL FILE 10"  
SQUARE BASTARD  
CUT (250mm)

BUY ONE  
GET ONE  
FREE!



BLU-MOL®

BL442-101  
BL442-101

\$10.00+GST  
FREE

BLU-MOL FILE 6"  
SQUARE 2ND CUT  
(150mm)

BUY ONE  
GET ONE  
FREE!



BLU-MOL®

BL442-062  
BL442-062

\$8.57+GST  
FREE

BLU-MOL FILE 10"  
SQUARE 2ND CUT  
(250mm)

BUY ONE  
GET ONE  
FREE!



BLU-MOL®

BL442-102  
BL442-102

\$10.71+GST  
FREE

BLU-MOL FILE 6"  
HALF ROUND 2ND  
CUT (150mm)

BUY ONE  
GET ONE  
FREE!



BLU-MOL®

BL436-062  
BL436-062

\$9.29+GST  
FREE

BLU-MOL FILE 8"  
HALF ROUND  
2ND CUT (200mm)

BUY ONE  
GET ONE  
FREE!



BLU-MOL®

BL436-082  
BL436-082

\$12.14+GST  
FREE

BLU-MOL FILE 10"  
HALF ROUND 2ND  
CUT (250mm)

BUY ONE  
GET ONE  
FREE!



BLU-MOL®

BL436-102  
BL436-102

\$13.57+GST  
FREE

BLU-MOL FILE 10"  
HALF ROUND  
BASTARD (250mm)

BUY ONE  
GET ONE  
FREE!



BLU-MOL®

BL436-101  
BL436-101

\$14.29+GST  
FREE

BLU-MOL FILE 6"  
HALF ROUND  
SMOOTH CUT (150mm)

BUY ONE  
GET ONE  
FREE!



BLU-MOL®

BL436-063  
BL436-063

\$9.29+GST  
FREE

BLU-MOL FILE 8"  
HALF ROUND  
SMOOTH CUT (200mm)

BUY ONE  
GET ONE  
FREE!



BLU-MOL®

BL436-083  
BL436-083

\$12.14+GST  
FREE

## JOSCO FLAP DISC CERAMIC

Excellent for fast, aggressive stock removal and weld finishing. Cuts faster and lasts longer than conventional grits. Features a trimmable back allowing the disc to be cut back to expose unused abrasive cloth. Trimmable back provides increased disc longevity.



**Josco**

JDC11540	115x22 40g	\$10.56+GST
JDC11560	115x22 60g	\$10.56+GST
JDC11580	115x22 80g	\$10.56+GST
JDC12740	127x22 40g	\$13.58+GST
JDC12760	127x22 60g	\$13.54+GST
JDC12780	127x22 80g	\$13.58+GST

## JOSCO STRIP- IT DISC

Ideal for surface preparation, cleaning welds, removal of paint, rust, varnish, graffiti and light scale. Made with silicon carbide impregnated nylon. For use with Angle Grinders.



**Josco**

BSD100	100x16	\$10.85+GST
BSD115	115x22	\$11.52+GST
BSD127	127x22	\$13.37+GST

## JOSCO BRUSH CUP CR 75XMT 0.30MM M10/M14

**FREE BONUS!**

Allows for softer brushing for surface preparation and light paint, rust and weld scale removal. HD Steel Wire allows it to be used on steel, brass, iron, plastic and wood surfaces. Material Type: HD Steel Wire Maximum RPM: 12,000



**Josco**

153M	\$16.45+GST
<b>BLH3RC JOSCO BRUSH</b>	<b>FREE</b>

## JOSCO BRUSH CUP TK18 75X1RXMT 0.50MM

**FREE BONUS!**

Ideal for hard/aggressive brushing and contaminant removal. Great for paint, rust and weld scale removal also. Twistknot XHD wire is a premium tenacious wire providing faster, more aggressive cut together with longer life. Increased durability and better suited to extreme brushing requirements.



**Josco**

166BM	\$19.86+GST
<b>BLH3RC JOSCO BRUSH</b>	<b>FREE</b>

## JOSCO BRUSH CUP TK18 75X1RXMT 0.50MM STAINLESS 316

**FREE BONUS!**

Ideal for hard/aggressive brushing and contaminant removal. Great for paint, rust and weld scale removal also. Made with premium grade 316 stainless steel. Ideal for tough conditions with increased resistance to corrosion in marine environments.



**Josco**

166BMSS	\$41.41+GST
<b>BLH3RC JOSCO BRUSH</b>	<b>FREE</b>

## JOSCO BRUSH CUP TK18 75X1RXMT 0.35MM

**FREE BONUS!**

Ideal for hard/aggressive brushing and contaminant removal. Great for paint, rust and weld scale removal also. Twistknot XHD wire is a premium tenacious wire providing faster, more aggressive cut together with longer life. Increased durability and better suited to extreme brushing requirements.



**Josco**

166M	\$19.99+GST
<b>BLH3RC JOSCO BRUSH</b>	<b>FREE</b>

## JOSCO POLISHING MUSHROOM 75 CALICO 6.3 SPINDLE

Allows for softer brushing for surface preparation and light paint, rust and weld scale removal. HD Steel Wire allows it to be used on steel, brass, iron, plastic and wood surfaces.



**Josco**

BCM75	\$11.67+GST
-------	-------------

## JOSCO BRUSH BEVEL TK20 100X1RXMT 0.50MM

Twistknot wire ideal for hard/aggressive brushing. Great for contaminant removal and removal of rust, paint, scale and corrosion. Made with XHD steel. Provides more aggression and faster cutting.



**Josco**

TB100M	\$18.73+GST
--------	-------------

## JOSCO BRUSH WHEEL CR

**Josco**

Allows for softer brushing for surface preparation and light paint, rust and weld scale removal. HD Steel Wire allows it to be used on steel, brass, iron, plastic and wood surfaces.



102B	150X19XMB 0.35MM	\$24.61+GST
103A	200X19XMB 0.35MM	\$32.45+GST

## JOSCO BRUSH BEVEL TK20 100X1RXMT 0.50MM STAINLESS 316

Twistknot wire ideal for hard/aggressive brushing. Great for contaminant removal and removal of rust, paint, scale and corrosion. Made with premium grade 316 stainless steel. Ideal for tough conditions.



**Josco**

TB100MSS	\$48.19+GST
----------	-------------

## JOSCO BRUSH HAND

**Josco**



402	JOSCO BRUSH HAND 4R PLASTIC LONG HANDLE	\$7.05+GST
422	JOSCO BRUSH HAND 4R STAINLESS PLASTIC LONG HANDLE	\$11.10+GST
442	JOSCO BRUSH HAND 4R BRASS PLASTIC LONG HANDLE	\$13.18+GST
BLH3R	JOSCO BRUSH HAND 3R WOOD LONG HANDLE	\$3.43+GST
BLH4R	JOSCO BRUSH HAND 4R WOOD LONG HANDLE	\$3.90+GST
BLH4RB	JOSCO BRUSH HAND 4R BRASS WOOD LONG HANDLE	\$8.19+GST
BLH4RSS	JOSCO BRUSH HAND 4R STAINLESS WOOD LONG HANDLE	\$6.79+GST
BSBB	JOSCO BRUSH HAND CR BRASS ORANGE PLASTIC HANDLE	\$7.86+GST
BSBS	JOSCO BRUSH HAND CR STEEL RED PLASTIC HANDLE	\$5.26+GST
BSBSS	JOSCO BRUSH HAND CR STAINLESS GREEN PLASTIC HANDLE	\$7.86+GST
JHBHBL	JOSCO BRUSH HAND HOT BENCH WOOD LARGE HANDLE	\$11.89+GST

## JOSCO BRUSH BEVEL TK24 115X1RXM14 0.50MM

Designed specifically for brushing in hard-to-reach areas of work piece. Twistknot wire ideal for hard/aggressive brushing. Great for contaminant removal and removal of rust, paint, scale and corrosion. Made with XHD steel. Provides more aggression and faster cutting.



**Josco**

TB1153	\$19.85+GST
--------	-------------

## JOSCO BRUSH BEVEL TK30 150X1RXM14 0.50MM

Twistknot wire ideal for hard/aggressive brushing. Great for contaminant removal and removal of rust, paint, scale and corrosion. Made with XHD steel. Provides more aggression and faster cutting.



**Josco**

TB1503	\$49.68+GST
--------	-------------

## JOSCO POLISHING WHEEL FOLD CALICO LOOSE LEAF

Excellent for achieving a high-quality gloss finish when polishing.



**Josco**

JLL15050	150x15 50	\$11.38+GST
JLL20050	200x15 50	\$19.68+GST

## JOSCO DISC ABRASIVE FLAP

Ideal for removing rust from steel surfaces. Cleaning up and removing paint from steel, stainless steel and aluminium.



**Josco**

JPD125C	127MM COARSE	\$16.55+GST
JPD125F	127MM FINE	\$16.55+GST
JPD125M	127MM MEDIUM	\$16.55+GST

## JOSCO POLISHING KIT 50 4 PCE 6.3 HEX SPINDLE

Ideal for polishing aluminium, brass, steel, stainless steel, copper and most other metals.

- 1 x Sisal Buff
- 1 x Loose Leaf Calico Buff
- 1 x FASTCUT Card
- 1 x SS Compound



**Josco**

JPK1	\$11.42+GST
------	-------------

## JOSCO POLISHING KIT 50 & 100 6 PCE 6.3 HEX SPINDLE

1 x 50mm Sisal Buff, 1 x 50mm Loose Leaf Calico Buff, 1 x 100mm Loose Leaf Calico Buff, 1 x Fastcut Compound, 1 x SS Compound, 1 x Arbor. Suitable for aluminium, brass, steel, stainless steel and copper.

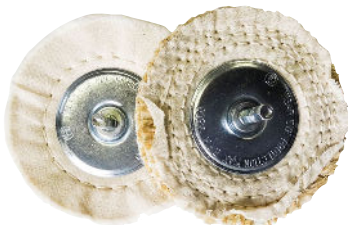


**Josco**

JPK2	\$21.84+GST
------	-------------

## JOSCO POLISHING WHEEL 100 2 PCE KIT 6.3 HEX SPINDLE

Josco 100mm Replacement Buffs Maximum RPM: 4,500 Ideal for polishing aluminium brass, steel, stainless steel, copper and most other metals. Kit contains: 1 x 100mm Sisal Buff 1 x 100mm Loose Leaf Calico Buff



**Josco**

JRPK100	\$9.68+GST
---------	------------

## JOSCO POLISHING WHEEL 50 2 PCE KIT 6.3 HEX SPINDLE

Ideal for polishing aluminium brass, steel, stainless steel, copper and most other metals. Kit contains: 1 x 50mm Sisal Buff 1 x 50mm Loose Leaf Calico Buff



**Josco**

JRPK50	\$5.22+GST
--------	------------

## JOSCO BRUSH WHEEL PIPELINE TK60 178X1RX22 0.50MM

Used in areas such as stringer bead welds, hot pass, double-jointing and bevel cleaning. Made with XHD steel, a premium tenacious wire providing faster, more aggressive cut together with longer life. Increased durability and better suited to extreme brushing requirements.



**Josco**

JS8020	\$58.83+GST
--------	-------------

## JOSCO POLISHING COMPOUND BLUE MULTISHINE LARGE

Achieve high gloss finish. Use on plastics, silver, gold and die cast articles. Use with a Josco Loose Leaf Calico Buff.



**Josco**

MULTISHINEJ	\$13.99+GST
-------------	-------------

## JOSCO POLISHING COMPOUND BROWN TRIPOLI LARGE

General purpose cutting compound. Suited for copper, brass, aluminium and most other metals. Can be used with a Josco Stitched Rag or Loose Leaf Calico Buff.



**Josco**

TRIPOLIJ	\$9.90+GST
----------	------------

## JOSCO DRILL ACCESSORY KIT 4 PCE 6.3 HEX SPINDLE SET

4 Piece Drill Accessory Kit Multi-purpose drill kit to cover any project. Spindle-mounted directly onto drill. Can be used on steel, brass, iron, wood and plastic surfaces.



**Josco**

PDKIT	\$9.19+GST
-------	------------

## JOSCO BRUSH HAND 3R 180X10 STAINLESS SMALL PLASTIC HANDLE

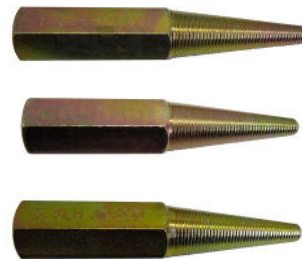
High quality stainless steel bristle. Small, strong plastic handle with ergonomic finger grip. 180 x 10 mm



**Josco**

PH3RSS	\$15.15+GST
--------	-------------

## JOSCO TAPERED SPINDLE



**Josco**

JTS012L	M12x1.75 Left Hand	\$11.25+GST
JTS016L	M16x2.00 Left Hand	\$13.75+GST
JTS120L	1/2" Left Hand	\$11.11+GST
JTS580L	5/8" Left Hand	\$13.50+GST

## JOSCO POLISHING COMPOUND GREY FASTCUT LARGE

Achieve high gloss finish. Use on plastics, silver, gold and die cast articles. Use with a Josco Loose Leaf Calico Buff.



**Josco**

FASTCUTJ	\$10.60+GST
----------	-------------



**KAPRO 905 CONDOR LEVEL**



- > 2 solid acrylic shockproof vials
- > OPTI-VISION Red horizontal vial creates highly visible red bubble edges, for exact placement between the reading lines and optimal vision in low light
- > Tilted, tri-surface horizontal vial: direct line of sight for easy viewing and superior vial protection
- > Plumb Sit Dual-View vial with RedEffect for a clear plumb view

KL905-120 120CM \$72.18+GST

KL905-180 180CM \$96.75+GST

**KAPRO TORPEDO LEVEL 9" RUBBER ENDCAPS**



- > 3 easy-to-read vials (horizontal, vertical & 45deg)
- > Magnetic V-groove for pipe/conduit
- > Tough rubber end caps
- > 23cm (9")

KL227-08 \$7.99+GST

**KAPRO 935 OPTIVISION RED TORPEDO - MAGNETIC LEVEL 25CM**



OPTIVISION™ Red horizontal vial creates highly visible red bubble edges, for exact reading and optimal vision in bright & low light. Tilted horizontal vial with epoxy locking for direct line of sight viewing. Vial Gradient Lines for measuring slopes up to 2% grade. 3 Unbreakable Acrylic Shockproof Vials Accuracy: <math><0.0005^\circ</math> (0.5mm/m) Angle Finder with gradient markings every 5° to easily find the degree of any slope. Rare-Earth Magnets for the strongest grip to any metal surface. Fine Milled Surface with V-groove for accurate and easy placement on pipes and curved surfaces

KL935 \$64.50+GST

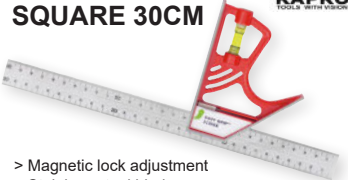
**KAPRO SLIDING TEE BEVEL**



- > Easy-to-read vial
- > Built-in 5mm trim gauge on side and bottom
- > Angle markings on handle
- > Stainless steel blade and bolt
- > Inch/cm graduations

KL301 \$8.91+GST

**KAPRO 325 MAG LOCK COMB SQUARE 30CM**



- > Magnetic lock adjustment
- > Stainless steel blade
- > Permanently etched ruler markings (inches and centimetres)
- > Heavy duty cast zinc body
- > 5 milled sides for superior accuracy
- > Easy Grip magnet-held stainless steel scriber
- > Belt holster included
- > 30cm ruler

KL325-30 \$30.18+GST

**KAPRO COMBINATION SQUARE 30CM**



- > Heavy duty cast zinc body
- > Milled on all sides
- > Stainless steel blade
- > Permanently etched ruler markings (inches and centimetres)

KL352 \$26.72+GST

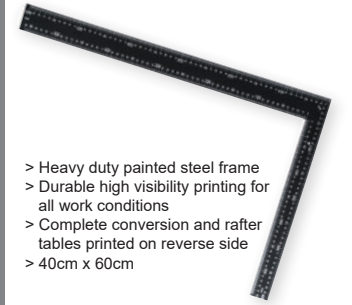
**KAPRO RAFTER SQUARE 7IN**



- > Durable & lightweight Ergocast material
- > Moulded-in conversion table
- > Easy-to-read graduations
- > Base enable easy marking and cutting

KL444-00 \$8.83+GST

**KAPRO 305 FRAMING SQUARE 40CM X 60CM**



- > Heavy duty painted steel frame
- > Durable high visibility printing for all work conditions
- > Complete conversion and rafter tables printed on reverse side
- > 40cm x 60cm

KL305-40 \$16.40+GST

**KAPRO 317 ADJUSTABLE T-SQUARE -120CM**



120cm length, Anodized aluminium finish, Sliding head adjusts to any angle, Folds for easy storage, Strong screw lock

KL317-120 \$70.38+GST

**KAPRO 2 PCE SET 977 LEVEL 600mm + 1800mm (SET 977-41 60cm/180cm)**



KL977COMBO-2B \$106.96+GST

**KAPRO 2 PCE LEVEL SET 987-41S - 600mm + 1800mm (SET 987-41 60cm,180cm)**



KL987XLCOMBO-2B \$118.70+GST

**KAPRO 3 PCE LEVEL SET 987-41S 600mm + 1200mm + 1800mm (SET 987-41 60cm/120cm/180cm)**



KL987XLCOMBO-3B \$178.52+GST

**KAPRO 995 VULCAN PREMIUM EL 1200mm + 923**



KL995-120+923 \$110.39+GST

**KAPRO 920 SUPERCAST LEVEL - MAGNETIC**

**NEW**



KL920-10-40M 40CM \$62.85+GST    KL920-10-60M 60CM \$84.12+GST

## KOMELON PROERGO POCKET TAPE PROERGO POCKET TAPE

Nylon coated blade, Class II accuracy printed blade, controlled by precise equipment, Ergonomically designed case, Top control speed lock holds blade securely. Triple-riveted end hook. Thick high carbon steel blade for maximum blade extension. Metric/Imperial



**3Mx16MM**

TA3320

\$10.44+GST



**5mx19mm**

TA3325

\$15.82+GST



**10MX25MM**

TA3335

\$27.49+GST



**3m/10ftx16mm  
METRIC/IMPERIAL (PE36E)**

TA3340

\$10.44+GST

## KOMELON PROERGO POCKET TAPE



Nylon coated blade, Class II accuracy printed blade, controlled by precise equipment, Ergonomically designed case, Top control speed lock holds blade securely. Triple-riveted end hook. Thick high carbon steel blade for maximum blade extension. Metric/Imperial



**5m/16ftx19mm  
Metric/Imperial (PE59E)**

TA3345

\$15.82+GST



**8m/26ftx25mm  
Metric/Imperial (PE85E)**

TA3350

\$22.88+GST

## KOMELON 8mx25mm PROERGO HIGH VIZ BLADE POCKET TAPE DUAL SIDED



- > HI VIZ Nylon coated blade
- > Class II accuracy printed blade
- > Ergonomically designed case for comfortable grip
- > Triple-riveted end hook
- > Top control speed lock holds blade securely
- > Thick high carbon steel blade for maximum blade
- > Pocket tape in HI VIZ ABS case with Yellow Nylon Coated Steel Blade and belt clip (mm marking on metric only tapes)
- > 8m long
- > 5mm blade width



TA3331

\$29.23+GST

## KOMELON 8mx32mm MAGGRIP XTRA MAG TIP HIGH VIZ POCKET TAPE (MX82HV)

- > Large magnetic end hook
- > Class II accuracy printed blade
- > Nylon coated blade for MAXIMUM durability
- > Rubberized case protects end hook and button
- > Moulded black rubber around yellow case designed for comfort and durability



TA3361

\$47.08+GST

## KOMELON 8X27MM POWER BLADE 2 HIGH VIZ BLADE TAPE DUAL SIDED



- > High viz two colour blade.
- > larger printing to aid in readability and marking.
- > New ultra compact protective rubber case
- > Non-slip locking button
- > durable powerblade coating
- > double sided printing
- > Patented magnetic dual end hook



TA3840

\$38.53+GST

## KOMELON 8X25MM FULL AUTO SELF LOCK POCKET TAPE- HI VIZ BLADE DUAL SIDED



- > Self locking mechanism allows blade to be extended smoothly
- > Easy to use thumb button. Push button retrieval.
- > Magnetic tip allows for easier one person measurement.
- > Double sided two color blade with Hi-Viz for better visibility
- > Ergonomically designed case used easily in either hand
- > Improved button structure for impact resistance and superior durability
- > Built-in shock absorber
- > Hi Viz case and blade



TA3396

\$29.02+GST

## KOMELON 8X27MM ABS POWER BLADE HIGH VIZ BLADE TAPE DUAL SIDED



- > Hi Viz two colour blade.
- > larger printing to aid in readability and marking.
- > New ultra compact protective Hi Viz rubber case
- > Non-slip locking button
- > durable powerblade coating
- > double sided printing
- > Patented magnetic dual end hook



TA3849

\$40.13+GST

## KOMELON 30mx13mm EVOLUTION GRIPPER NYLON COATED HIGH VIZ

- > Closed case long steel tape measure
- > Ergonomic, compact case design
- > High visibility blade color
- > Convenient carabiner clip for easy storage
- > High visibility blade that is easy to read in all environments.
- > ABS case with durable rubber grip Hi Viz case and blade



TA3540

\$37.78+GST

## KOMELON 1MTR FOLDING RULER HIGH-VIZ



- > 1M High-Viz Folding ruler
- > Compact design with 4 section folding
- > Metric Graduation
- > Accurate readings
- > ABS plastic material used for more durability
- > Graduations on both sides with highly visible background



FD1MHV

\$20.22+GST

## KOMELON 30mx10mm UNIGRIP ERGO HIGH VIZ LONG STEEL CLOSED TAPE

- > Hi Viz Nylon coated blade
- > Class II accuracy printed blade, controlled by precise equipment
- > Ergonomically designed rubber jacketed case fits nicely in hands
- > Folding rewind crank for fast reliable retrieval
- > Heavy duty construction
- > High impact resistant Hi Viz ABS plastic case
- > Rubber jacketed ABS case with Yellow Nylon Coated Steel Blade and folding rewind handle
- > 30m long
- > 10mm blade width



TA3114

\$37.78+GST

**KOMELON INOX RUBBER S/STEEL POCKET TAPE**  
5mx19mm (IR59)      8mx25mm (IR85)



- > All metallic components are stainless steel for rust resistance
- > Class II accuracy printed blade, controlled by precise equipment
- > Nylon coated blade for maximum durability
- > Impact absorbing rubberized case and button
- > Positive lock holds blade firmly
- > Compact tape with rubber cushion case cover



TA3375      \$24.42+GST      TA3380      \$36.70+GST

**KOMELON 2M X 13MM POWERBLADE II TAPE**



- > 20 X 2M power blade measuring tapes in a Jar
- > larger printing to aid in readability and marking
- > New ultra compact protective rubber case
- > Non-slip locking button
- > Durable powerblade coating
- > Double sided printing
- > Key chain clip, Ultra compact



TA3821      SOLD PER TAPE 20 UNITS PER JAR      \$6.73+GST

**KOMELON 8mx25mm MAGGRIP DUBLEX MAG. TIP POCKET TAPE (MD85) DUAL SIDED**



- > Large magnetic end hook
- > Class II accuracy printed blade
- > Nylon coated blade for MAXIMUM durability
- > Rubberized case protects end hook and button
- > Moulded black rubber around yellow case



TA3356      \$30.56+GST

**KOMELON 8mx32mm MAGGRIP XTRA MAG. TIP POCKET TAPE (MX82)**

- > Large magnetic end hook
- > Class II accuracy printed blade, controlled by precise equipment
- > Nylon coated blade for MAXIMUM durability
- > Rubberized case protects end hook and button
- > Moulded black rubber around yellow case designed for comfort and durability
- > Pocket tape with Magnetic Tip, ABS case and Yellow Nylon Coated Steel blade



TA3360      \$33.63+GST

**KOMELON MEASURING WHEEL**



- > Folding shaft
- > Adjustable twist and lock handle
- > Gear-drive, 5 digit counter
- > Kickstand moulded onto counter housing
- > Impact resistant counter jacket



**254mm/10in**      **150mm/6in**      **363mm/14.3"**  
TAMK31M      \$115.18      TAMW18M      \$113.64      TAMK45M      \$159.71

**KOMELON 8mx25mm PROERGO POCKET TAPE (PE85)**

- > Nylon coated blade
- > Class II accuracy printed blade
- > Ergonomically designed case
- > Top control speed lock holds blade securely
- > Triple-riveted end hook
- > Thick high carbon steel blade for maximum blade extension
- > mm marking on metric only
- > 8m long
- > 25mm blade width



TA3330      \$30.76+GST  
TA3112 KOMELON 20mx10mm UNIGRIP ERGO LONG STEEL CLOSED TAPE (LUR20)      FREE

**KOMELON 30M KMC-2300NX CONTRACTOR LT STEEL TAPE**



The Contractor LT by Komelon is the first long steel tape with extruded blade coating. This is a special coating that surrounds the entire blade to protect it and the markings from any abrasion. It's heavy-duty, ergonomic case is durable and will withstand the harshest work environments. It even has a built-in blade cleaner to ensure long-lasting blade life. Lastly, the long steel tape features a fast, 3:1 geared rewind and comes with a stake for single person use.

- > 30M > Extruded blade coating > 3 to 1 geared rewind
- > Built-in blade cleaner



TALFP30/ER      \$121.43+GST  
TA3360 KOMELON 8mx32mm MAGGRIP XTRA MAG. TIP POCKET TAPE (MX82)      FREE

**KOMELON FOLDING SPEED CUT PRO 6.5TPI 210mm**



- > 8" (210mm) curved blade folding saw
- > 6.5TPI Tri-Edge teeth for clean smooth cuts
- > Rust resistant hard chromed blade
- > SK4 high carbon steel blade for faster cutting
- > Impulse hardened teeth for
- > Folding design for compact storage
- > Non-slip grip
- > Ideal for pruning



KMFC-210      \$26.82+GST

**KOMELON 13mm x 2M STICK AND MEASURE FLAT TAPE (F23)**



- > 13mm x 2m Adhesive backing flat steel tape
- > Can be cut to desired length
- > Easily apply to any clean and flat surface



TA3940      \$10.19+GST

**KOMELON PRUNING SPEED CUT PRO 6.5TPI 330mm**



- > 13" (330mm) curved blade saw
- > 6.5TPI Tri-Edge teeth for clean smooth cuts
- > Rust resistant hard chromed blade
- > SK4 high carbon steel blade for faster cutting
- > Impulse hardened teeth for maximum durability
- > Sheath with detachable belt loop for safety
- > Non-slip grip
- > Ideal for pruning, forestry and fruit trees etc



KMCWC-330      \$26.82+GST

**KOMELON SPEED CUT CURVED SPARE BLADE ONLY - FITS KMCWC-330**



- > 13" (330mm) curved blade
- > 6.5TPI Tri-Edge teeth for clean smooth cuts
- > Rust resistant hard chromed blade
- > SK4 high carbon steel blade for faster cutting



KMCW-330B      \$20.41+GST

**KOMELON SPEED CUT PRO FOLDING CURVED SPARE BLADE ONLY FITS KMFC-210**



- > 8" (210mm) curved blade
- > 6.5TPI Tri-Edge teeth for clean smooth cuts
- > Rust resistant hard chromed blade
- > SK4 high carbon steel blade for faster cutting
- > Impulse hardened teeth



KMFC-210B      \$16.43+GST

## KOMELON PULL SAW 240mm EXTRA FINE 17TPI



- > Extra fine cut with 17TPI
- > Cutting PVC pipe, plastic & timber
- > Blade length 240mm
- > Teeth Pitch 1.5mm
- > High quality blade made in Korea
- > Impulse hardened blade with nickel plated coating
- > Ergonomic handle

**KOMELON.**

OT-240 \$45.88+GST

## 240mm PULL SAW REPLACEMENT BLADE (EXTRA FINE 17TPI)



- > Extra fine cut with 17TPI
- > Blade length 240mm
- > Teeth Pitch 1.5mm
- > High quality blade made in Korea
- > Impulse hardened blade with nickel plated coating

**KOMELON.**

OT-240B \$24.00+GST

## KOMELON 265mm PULL SAW REPLACEMENT BLADE (FINE/MEDIUM 14TPI)



- > Replacement Blade For Pipe Saw
- > 265mm
- > Medium/ Fine Cut
- > 14 TPI

**KOMELON.**

OT-265B \$34.74+GST

## KOMELON SNAP 25mm WHEEL-LOCK KNIFE ERGONOMIC NON-SLIP GRIP **NEW**



- > Wheel Lock
- > Strong & Sharp Edge Blade
- > High Strength Stainless Blade Guide (HV170)
- > SK2Cr4 Blade Material

**KOMELON.**

HNB-W7 \$11.04+GST

## KOMELON 25mm SNAP OFF KNIFE ERGONOMIC NON-SLIP GRIP - AUTO LOCK **NEW**



- > Auto Lock
- > Ergonomic Non-slip Grip
- > Strong & Sharp Edge Blade
- > High Strength Stainless Blade Guide (HV170)
- > SK2Cr4 Blade

**KOMELON.**

HRG-A7 \$12.08+GST

## KOMELON 25mm SNAP OFF KNIFE ERGONOMIC NON-SLIP GRIP + BONUS 3 BLADES /CASE **NEW**



- > Auto Lock
- > Ergonomic Non-slip Grip
- > Strong & Sharp Edge Blade
- > High Strength Stainless Blade Guide (HV170)
- > SK2Cr4 Blade

**KOMELON.**

HRG-A7P3 \$15.55+GST

## KOMELON 18mm SNAP OFF KNIFE AUTO LOCK **NEW**



- > Auto Locking
- > Ergonomic Non-slip Grip
- > Strong & Sharp Edge Blade
- > High Strength Stainless Blade Guide (HV170)
- > SK2Cr4 Blade

**KOMELON.**

LNB-A5 \$7.89+GST

## KOMELON 18mm SNAP OFF KNIFE ALUMINIUM AUTO LOCK **NEW**



- > Aluminum die-casting body
- > Strong and sharp SK2Cr4 blade
- > High strength stainless steel guide
- > 0.5MM tolerance between guide and blade
- > Stainless steel guide
- > Firm and smooth button operation

**KOMELON.**

LDB-A5 \$13.94+GST

## KOMELON SNAP 18mm AUTO-LOCK KNIFE ERGONOMIC NON-SLIP GRIP **NEW**



- > Wheel Lock
- > Ergonomic Non-slip Grip
- > Strong & Sharp Edge Blade
- > High Strength Stainless Blade Guide
- > SK2Cr4 Blade Material

**KOMELON.**

LRG-A5 \$9.25+GST

## KOMELON 18mm SNAP OFF KNIFE ERGONOMIC NON-SLIP GRIP - WHEEL LOCK **NEW**



- > Firm Wheel Lock
- > Ergonomic Non-slip Grip
- > Strong & Sharp Edge Blade
- > High Strength Stainless Blade Guide
- > SK2Cr4 Blade Material

**KOMELON.**

LRG-W5 \$9.74+GST

## KOMELON 9mm AUTO- LOCK SNAP OFF KNIFE **NEW**



- > Smooth Autolock Button
- > Strong & Sharp Edge Blade
- > High Strength Stainless Blade Guide
- > SK2Cr4 Blade Material

**KOMELON.**

SNB-A4 \$4.89+GST

## KOMELON 8x25MM LED LIGHT RECHARGEABLE POCKET TAPE (PLD85) DUAL SIDED



- > 8x25mm in a Ultra Compact Case
- > Powerful LED
- > White non glare blade
- > Extra heat treated end hook
- > USB charging cable is included
- > Quick charge Mode (40mins. Lasts 120 mins per charge)

**KOMELON.**

TA3860 \$46.16+GST

## KOMELON 8m x 32mm BIG STAND OUT POCKET TAPE DUAL SIDED



- > 3.7m standout with wide blade
- > 8x32mm Dual sided printed
- > Nylon coated blade for maximum durability
- > PC-ABS case for impact resistance
- > Extra heat treated end hook

**KOMELON.**

TA3365 \$48.88+GST

## KOMELON 50M LASER MEASURE LM25



- > Measures up to 50m
- > Battery Type for use: 2 Alkaline AAA batteries
- > Save up to 20 historical values
- > Easy to read display screen even in dark (back light)
- > Attaches for more convenience
- > Auto levelling function
- > Indirect - Pythagoras

**KOMELON.**

LM25 \$104.15+GST

## KOMELON 80M LASER MEASURE LM28



- > Measures up to 80m
- > Battery Type for use: 3 Alkaline AAA batteries
- > Measure distance, area, volume, indirect distance by Pythagorean theorem.
- > Auto levelling and Auto height function
- > IP65 dustproof and water proof
- > Digital angle display
- > 2 - inch white -on-black HD display, for improved readability under the sun.
- > Mountable on tripod

**KOMELON.**

LM28 \$182.25+GST

## KOMELON 230mm HIGH-VIZ TORPEDO LEVEL (HANG CARD)



- > Durable ABS body and aluminium frame
- > Magnetic base for attaching to metal frames
- > 90, 180 and 45 degree convenient vials
- > Full length magnet
- > Aluminium frame
- > V-groove edge
- > Top-Read window.

**KOMELON.**

TP-23HV \$6.01+GST

**NORMA WORM DRIVE HOSE CLAMPS**  
**NORMA**



N-008-16/9W3P	9mm BAND 8-16mm W3	\$2.04+GST
N-012-20/9W3P	9mm BAND 12-20mm W3	\$2.08+GST
N-016-25/9W3P	9mm BAND 16-25mm W3	\$2.35+GST
N-020-32/9W3P	9mm BAND 20-32mm W3	\$2.50+GST
N-025-40/9W3P	9mm BAND 25-40mm W3	\$2.50+GST
N-030-45/9W3P	9mm BAND 30-45mm W3	\$2.64+GST
N-032-50/9W3P	9mm BAND 32-50mm W3	\$2.84+GST
N-050-70/9W3P	9mm BAND 50-70mm W3	\$2.84+GST
N-060-80/9W3P	9mm BAND 60-80mm W3	\$3.35+GST
N-008-12/7.5W3P	7.5mm BAND 8-12mm W3	\$2.08+GST
N-016-27/12W3P	12mm BAND 16-27mm W3	\$2.87+GST
N-020-32/12W3P	12mm BAND 20-32mm W3	\$2.87+GST
N-025-40/12W3P	12mm BAND 25-40mm W3	\$2.87+GST
N-030-45/12W3P	12mm BAND 30-45mm W3	\$2.87+GST
N-035-50/12W3P	12mm BAND 35-50mm W3	\$3.46+GST
N-040-60/12W3P	12mm BAND 40-60mm W3	\$3.46+GST
N-050-70/12W3P	12mm BAND 50-70mm W3	\$3.57+GST
N-070-90/12W3P	12mm BAND 70-90mm W3	\$4.58+GST

**NORMA GBS HEAVY DUTY T-BOLT CLAMPS**



N-GBS020/18NW2	18mm BAND 19-21mm W2	\$3.58+GST
N-GBS026/18NW2	18mm BAND 25-27mm W2	\$4.22+GST
N-GBS028/18NW2	18mm BAND 27-29mm W2	\$4.39+GST
N-GBS030/18NW2	18mm BAND 29-31mm W2	\$4.45+GST
N-GBS033/18NW2	18mm BAND 31-34mm W2	\$4.54+GST
N-GBS036/18NW2	18mm BAND 34-37mm W2	\$4.54+GST
N-GBS039/18NW2	18mm BAND 37-40mm W2	\$4.67+GST
N-GBS045/20NW2	20mm BAND 43-47mm W2	\$6.16+GST
N-GBS049/20NW2	20mm BAND 47-51mm W2	\$6.22+GST
N-GBS057/20NW2	20mm BAND 55-59mm W2	\$6.48+GST
N-GBS061/20NW2	20mm BAND 59-63mm W2	\$6.67+GST
N-GBS066/20NW2	20mm BAND 63-68mm W2	\$6.87+GST

**NORMA 100PCE WORM DRIVE HOSE CLIP GRAB KIT ASSORTMENT W3**



N-NHC100/W3 \$346.46+GST

**NORMA BREEZE HOSE CLIP 100 PCE GRAB SET**



N-BHC100/W4 \$333.56+GST

**OETIKER 2-EAR CLAMP ASSORTMENT 150 PCE + CUTTING TOOL**



OE10100150 \$250.83+GST

**OETIKER 2-EAR CLAMP ASSORTMENT 130 PCE**



OE10100130 \$149.60+GST

**OETIKER 2-EAR CLAMPS**



OE10100008	7 - 9mm ZINC PLATED	\$0.98+GST
OE10100013	9 - 11mm ZINC PLATED	\$0.98+GST
OE10100016	10.8 - 13mm ZINC PLATED	\$1.03+GST
OE10100019	12.5 - 15mm ZINC PLATED	\$1.03+GST
OE10100022	15 - 17mm ZINC PLATED	\$1.08+GST
OE10100024	15 - 18mm ZINC PLATED	\$1.08+GST
OE10100030	19 - 23mm ZINC PLATED	\$1.69+GST
OE10100097	16 - 19mm ZINC PLATED	\$1.38+GST



## GJ GRAB KIT GREASE NIPPLES

**NEW**



- > 14 Sizes: M6 to M8, UNF 1/4", BSF 1/4", NPT 1/8", BSP 1/8"
- > Straight, 45°, 67°, 90°
- > 144 Zinc Plated Pieces

Champion

GKA144 GJ GRAB KIT GREASE NIPPLES

\$66.27+GST

## GJ GRAB KIT FLANGE BOLTS & NUTS

**NEW**



- > 10 Sizes: 5mm to 8mm Dia
- > High Tensile Grade 8.8
- > Lengths: 16mm to 50mm
- > Zinc Plated
- > 178 Pieces

Champion

GKA179 GJ GRAB KIT FLANGE BOLTS & NUTS

\$39.53+GST

## GJ GRAB KIT HIGH TENSILE-METRIC

**NEW**



- > 14 Sizes: 4mm to 10mm Dia
- > High Tensile Grade 8.8
- > Lengths: 16mm to 50mm
- > Zinc Plated
- > 236 Pieces

Champion

GKA236 GJ GRAB KIT HIGH TENSILE-METRIC

\$36.04+GST

## GJ GRAB KIT METRIC O RINGS

**NEW**



- > 14 sizes: 5mm to 25mm ID
- > 70 Shore
- > 380 Pieces

Champion

GKA380 GJ GRAB KIT METRIC O RINGS

\$45.96+GST

## GJ GRAB KIT METRIC SCREWS

**NEW**



- > 16 Sizes: 3mm to 6mm Dia
- > Lengths: 10mm to 25mm
- > Pan Head
- > Phillips Rec
- > 470 Pieces

Champion

GKA470 GJ GRAB KIT METRIC SCREWS

\$30.77+GST

## GJ GRAB KIT SELF-TAP PAN PHI

**NEW**



- > 12 Sizes: 6G to 10G Dia
- > Lengths: 3/8" to 1-1/2"
- > Pan Head
- > Phillips Rec
- > Black Zinc
- > 710 Pieces

Champion

GKA710 GJ GRAB KIT SELF-TAPP PAN PHIL

\$42.07+GST

## GJ GRAB KIT FLAT WASHERS

**NEW**



- > 16 Sizes: 3mm to 6mm Dia
- > Lengths: 10mm to 25mm
- > Pan Head
- > Phillips Rec
- > 470 Pieces

Champion

GKA740 GJ GRAB KIT FLAT WASHERS

\$32.11+GST

## GJ GRAB KIT SPLIT PINS

**NEW**



- > 10 Sizes: 1.6mm to 4mm, 7/64" Dia
- > Lengths: 22mm to 50mm
- > Zinc Plated
- > 795 Pieces

Champion

GKA795 GJ GRAB KIT SPLIT PINS

\$36.85+GST

## GJ GRAB KIT WIRING GROMMETS

**NEW**



- > 12 Sizes: 1/8" to 29/32"
- > Wire/Cable Size
- > 86 Pieces

Champion

GKA86 GJ GRAB KIT WIRING GROMMETS

\$47.70+GST

## GJ GRAB KIT BLANKING GROMMETS

**NEW**



- > 8 Sizes: 5/16" to 1-1/8"
- > Panel Hole Size
- > 95 Pieces

Champion

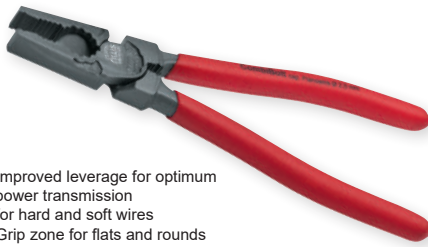
GKA95 GJ GRAB KIT BLANKING GROMMETS

\$48.53+GST

## NWS "COMBIMAX" COMBINATION PLIERS



- > HIGH LEVERAGE 225mm (9")
- > PLASTIC COATED HANDLES



- > Improved leverage for optimum power transmission
- > for hard and soft wires
- > Grip zone for flats and rounds
- > drop-forged, oil hardened tool steel

NWS109262-225

\$49.65+GST

## NWS CHAIN NOSE PLIERS



- > 205mm (8")
- > PLASTIC COATED HANDLES



- > For holding, gripping, bending and cutting work
- > For cutting hard and soft wires With cutting edge and burner hole
- > Serrated inside jaws With long flat-round jaws
- > Integrated ring spanner

NWS14062-205

\$47.80+GST

## NWS CABLE CUTTER



- > 210mm (8.1/4")
- > PLASTIC COATED HANDLES



- > Ergonomic design
- > Re-adjustable screw joint
- > maximum capacity 70mm/25mm
- > chrome finish
- > Dual uses for stripping and cutting macro serration

NWS04362-210

\$86.84+GST

## NWS SIDE CUTTER 200mm (8") HEAVY DUTY PLASTIC COATED HANDLES



- > Precision cutting edges for piano wire, 62 HRC
- > Length of cutting edges 24mm
- > Special tool steel, drop forged, oil hardened
- > Enormous cutting force because of optimum leverage
- > Over 40% reduced effort attested by VPA-Remscheid
- > Non-insulated

NWS13762-200

\$51.15+GST

## NWS "FANTASTICPLUS" LEVER SIDE



- > CUTTER 200mm
- > (8") HEAVY DUTY
- > PLASTIC COATED HANDLES



- > Precision cutting for bolts, nails, rivets, hard wires and similar materials
- > Cutting edge hardness approx 62 HRC
- > Up to 50% power saving compared to conventional power-side cutters
- > Ergonomic SoftGripp multicomponent safety cases made from special tool steel, forged, oil-hardened

NWS13862-200

\$62.71+GST

## NWS WATER PUMP PLIER



- > 300mm (12")
- > PLASTIC COATED HANDLES

- > Cogs further induction
- > hardened Chrome vanadium steel, drop forged and oil hardened
- > Dual serrated toothed jaws
- > Inverse box joint
- > Micro grinding for easy adjusting

NWS165112-300

\$59.79+GST

## NWS CABLE CUTTER



- > 210mm (8.1/4")
- > 2-COMPONENT
- > HANDLES INSULATED

- > Chrome finish
- > Macro serrations
- > 210mm long
- > Ergonomic design for better handling
- > Re-adjustable screw joint
- > Maximum cutting capacity 70mm2 / 25mm
- > Integrated forged protection against squeezing

NWS04349VDE-210

\$90.18+GST

## NWS "COMBIMAX" COMBINATION PLIERS



- > HIGH LEVERAGE
- > 205mm (8") 2-COMPONENT
- > HANDLES INSULATED

- > For holding, gripping, bending and cutting work
- > For cutting hard and soft wires
- > Cutting edges inductively hardened
- > Asymmetric inside jaws for better grip on the work piece
- > Gripping zones for flat and round materials
- > Nail- & wire holder Integrated ring spanner



NWS10949VDE-205

\$56.82+GST

## NWS "ERGOCOMBI" COMBINATION PLIERS



- > HIGH LEVERAGE
- > 200mm (8")
- > 2-COMPONENT

- > Cutting edge induction hardened
- > Nail holder
- > Grip zone for flats and rounds
- > Includes lock
- > Features safety lips
- > Nail holder
- > Impact protection



NWS109649VDE200

\$73.71+GST

## NWS SIDE CUTTER



- > 190mm (7.1/2")
- > 2-COMPONENT HANDLES INSULATED

- > Pliers for electrical installation
- > 4 Functions: cutting, stripping, crimping and bending
- > Stripping function for single and multi-stranded conductors with 1.5 mm<sup>2</sup> and 2.5 mm<sup>2</sup> conductor cross-section
- > Precision cutting edge for the finest wires
- > Cutting edges inductively hardened

NWS13549VDE-190

\$67.57+GST

## NWS "FANTASTICPLUS" LEVER SIDE CUTTER



- > 200mm (8")
- > HEAVY DUTY 2-COMPONENT
- > HANDLES INSULATED

- > Precision cutting for bolts, nails, rivets, hard wires and similar materials
- > Cutting edge hardness approx 62 HRC
- > Up to 50% power saving compared to conventional power-side cutters
- > Ergonomic SoftGripp multicomponent safety cases
- > made from special tool steel, forged, oil-hardened
- > Voltage rating is 1000 Volts (1kV)



NWS13849VDE-200

\$78.32+GST





**WEEKDAY WORKERS OR WEEKEND WARRIORS, FROM THE CONSTRUCTION SITE, TO THE SPORTS FIELD, SQWINCHER HAS THE PERFECT PACKAGE, FLAVOUR AND FORMULATION DESIGNED TO SATISFY THE TOUGHEST HYDRATION NEEDS.**

Sqwincer® has the perfect package, flavour and formulation designed to satisfy the toughest hydration needs.

Considering that it only takes 2% of dehydration to result in up to a 50% decrease in work & mental performance, Sqwincer® electrolyte replenishment is therefore crucial for the prevention of dehydration, heat stress and injury.

### SQWINCHER CONCENTRATE

- > 2L bottle mixes to 20L of Sqwincer®.
- > Mixes without stirring
- > Low in sodium.
- > Caffeine free.
- > 6 flavours available.
- > Great taste for increased fluid consumption.



SQ0051	Sqwincer Concentrate - Mixed flavour Bottle (2LTR) Box of 6 (1 X SQ0028, 1 X SQ0042, 1 X SQ0047, 1 X SQ0050, 1 X SQ0052, 1 X SQ0046)	\$197.69 <sup>+GST</sup>
SQ0028	Sqwincer Concentrate - Lemon Lime (2LTR)	\$33.70 <sup>+GST</sup>
SQ0042	Sqwincer Concentrate - Orange Bottle (2LTR)	\$32.64 <sup>+GST</sup>
SQ0046	Sqwincer Concentrate - Wild Berry (2LTR)	\$32.64 <sup>+GST</sup>
SQ0047	Sqwincer Concentrate - Tropical Cooler Bottle (2LTR)	\$32.64 <sup>+GST</sup>
SQ0050	Sqwincer Concentrate - Grape Bottle (2LTR)	\$32.64 <sup>+GST</sup>
SQ0052	Sqwincer Concentrate - Lemonade Bottle (2LTR)	\$32.64 <sup>+GST</sup>

### SQWINCHER QWIK STIKS

Half the sodium and more potassium compared to other electrolyte replacement beverages Mix with 20-ounces water. Zero sugar and zero calories



SQ0100	Sqwincer (50 x 3gram) Qwik Stiks Orange (PKT)	\$57.61 <sup>+GST</sup>
SQ0101	Sqwincer (50 x 3gram) Qwik Stiks Mixed Berry (PKT)	\$57.61 <sup>+GST</sup>
SQ0103	Sqwincer (50 x 3gram) Qwik Stiks Lemonade (PKT)	\$57.61 <sup>+GST</sup>
SQ0104	Sqwincer (50 x 3gram) Qwik Stiks Mixed Flavours (PKT)	\$65.40 <sup>+GST</sup>
SQ0106	Sqwincer (50 x 3gram) Qwik Stiks Grape (PKT)	\$57.61 <sup>+GST</sup>
SQ0107	Sqwincer (50 x 3gram) Qwik Stiks Lemon Lime (PKT)	\$57.61 <sup>+GST</sup>
SQ0109	Sqwincer (50 x 3gram) Qwik Stiks Cool Citrus (PKT)	\$61.38 <sup>+GST</sup>
SQWXP001	Sqwincer Qwik stiks retail Mixed flavours (10 PACK)	\$16.06 <sup>+GST</sup>

**MOST ITEMS ARE WARRANTED AGAINST FAULTY MATERIALS AND MANUFACTURE:** All advertised items were available at date of publication from the Cutting Edge promotions master agent Fox & Gunn Ltd, Private Bag 94304, Pakuranga, Auckland. The distributor of this publication is an independent distributor who may not have all items available. Fox & Gunn Ltd will endeavour to maintain item availability during the promotional period. Where a product is out of stock there will be no rain checks on the supply of that product or the advertised pricing on that product outside of the promotional dates. If a normal price is shown, this is the national recommended user price. Actual pricing varies from distributor to distributor. Some item styles may differ slightly from those illustrated. All sizes are approximate only. Accessories shown do not come with the item unless specifically listed in the specification. The colours in this catalogue may vary slightly from the actual item. E&OE. (c) Copyright 2020. Reproduction of this publication in whole or in part is prohibited without written approval from Fox & Gunn Ltd during the promotional period of 20th November 2022 - 31st December 2022. All prices shown in The Cutting Edge exclude GST unless otherwise stated. Pricing and specifications are subject to change at the discretion of the supplier.



# FOX & GUNN

Trade tools & hardware for over 90 years