

TRADE ESSENTIALS

FIRST FOR TOOLS,
CONSUMABLES AND
WORKSHOP EQUIPMENT

ISSUE 64

1 NOVEMBER 2024 - 31 JANUARY 2025



3 Piece Heavy Gauge Steel Cabinet Frame



5 Step Phosphate Free Rust Protection



3 Digit Combination Lock



Up to 40kg drawer loading capacity



3 Step Ball Bearing Slides



5" Castor Wheels with Brakes

1033 Piece Pro35™ 26" Mega Master Tool Kit

- The tool kit includes a variety of drive sockets - 1/4, 3/8, 1/2 & 3/4", bit sockets and ratchets, catering to different sizes and types of fasteners.
- The kit is further enriched with impact tools, combination spanners, screwdrivers, and an assortment of bits. T-handle Hex & TX Keys, pliers, power grips, and files add versatility to the kit.
- Pry bars, torque wrenches, taps, dies, and inspection tools are included for more specialized applications.
- The tool kit contains imperial spanners & sockets, along with a range of general tools, thereby covering most everyday aspects of mechanical and industrial tool needs.
- The top & middle storage have a new recessed side handle and flat aluminium drawer front handles.



1033 Pieces

26" →

16 Drawer

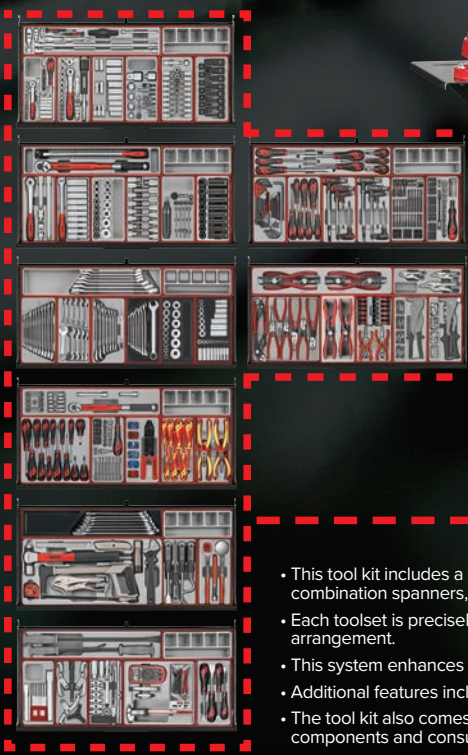
\$6999.00
\$8048⁸⁵ inc GST

PRO35™
SERIES

Code No. TKS26R1033T



1008 Piece Pro35™ 37" Roller Cabinet Tool Kit



1008 Pieces

37" →

8 Drawer

\$6999.00
\$8048⁸⁵ inc GST

Code No. TKW37B1008T



- This tool kit includes a wide array of tools essential for mechanical auto professionals: 1/4, 3/8 & 1/2" drive sockets, bit sockets, ratchets, impact tools, combination spanners, screwdrivers, T handle hex & TX keys, pliers, measuring and inspection tools, pullers, torque wrenches, and more.
- Each toolset is precisely arranged in a dedicated module as part of the TengTools tool control system, allowing for a flexible and dynamic tool kit arrangement.
- This system enhances organization and aids in quickly identifying any missing or inadvertently misplaced tools.
- Additional features include an 18 mm thick worktop in hard-wearing laminated MDF, a vice and vice shelf, a magnetic bits tray, and a paper holder.
- The tool kit also comes with seven TTZ01 storage modules in tool tray module size X2 (TTX2) featuring 6 compartments, ideal for storing small components and consumables.

IF YOU HAVEN'T GOT IT, YOU CAN'T USE IT

NEW PRODUCT

TENG SELL OUT

while
stock
lasts

140 Piece General Service Metric Starter Kit

Code No. TC8140NF



140 Pieces

42kg

- 6 Drawer
- 26" Wide Box
- 3 Step Ball Bearing Slides
- Heavy Gauge Steel
- Comfort Grip Handle
- 5-Step Rust Protection
- Combination Lock



\$1114.00

\$1281¹⁰ inc GST

- A comprehensive mechanics starter kit built up using the TengTools Tool Control system
- Supplied in a red TengTools 26" 6 drawer top box with 3 full width drawers and 3 smaller drawers secured with a combination lock
- Drop front with the TengTools logo to cover the drawers when the box is closed
- A handy lightweight plastic and aluminium tote tray is included for taking tools to the job in hand

131 Piece Base Metric Starter Kit (SV)

Code No. TC8131SV



131 Pieces

- 6 Drawer
- 26" Wide Box
- 3 Step Ball Bearing Slides
- Heavy Gauge Steel
- Comfort Grip Handle
- 5-Step Rust Protection
- Key Lock



\$778.00

\$894⁷⁰ inc GST

- 131 piece base starter kit including 8 x TC Trays containing 1/4", 3/8" & 1/2" drive socket sets, combination spanners, screwdrivers & pliers using the unique Teng TC-Tray™ modular system.
- Supplied with the 8 series TC806NF ball bearing slide 6 drawer top box.

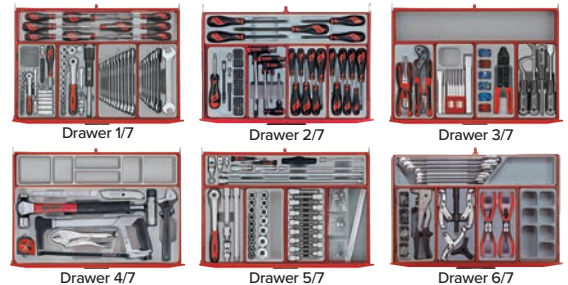
491 Piece Mechanic's General Metric Tool Kit

Code No. TCMM491N



491 Pieces

- 7 Drawer
- 26" Wide Cabinet
- Heavy Gauge Steel
- 5 Step Rust Protection
- 5" Castor Wheels with Brakes
- 3 Step Ball Bearing Slides
- Comfort Grip Handle
- Combination Lock



\$2581.50

\$2968⁷³ inc GST

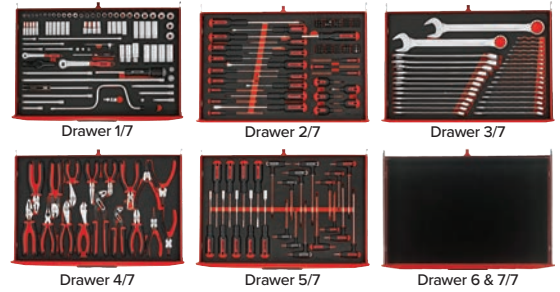
- A complete tool kit covering the requirements of most users
- All the tools are laid out in individual tool modules using the TengTools Tool Control system
- Easy to see if any tools have been mislaid or lost helping to prevent leaving them with the work piece
- Supplied in a red TengTools 26" 7 drawer roller cabinet
- A comprehensive selection of tools using 6 of the available 7 drawers ensuring that space is still available to add to the kit if needed

280 Piece General EVA Foam Tool Kit

Code No. TCMME09C



- 280** Pieces
- 7 Drawer
- 26" Wide Cabinet
- Heavy Gauge Steel
- 5 Step Rust Protection
- 5" Castor Wheels with Brakes
- 3 Step Ball Bearing Slides
- Comfort Grip Handle
- Combination Lock



\$2774.00

\$3190¹⁰ inc GST

- A comprehensive 280 piece tool kit with all tools laid out in two-colour pre-cut EVA foam which clearly shows if any tools are not in their correct place.
- Supplied in the Teng Tools TCW807N roller cabinet with ball bearing slides.

179 Piece General Metric EVA Tray Tool Kit (EV-Series)

Code No. TCMME179



- 179** Pieces
- 7 Drawer
- 26" Wide Cabinet
- Heavy Gauge Steel
- 5 Step Rust Protection
- 5" Castor Wheels with Brakes
- 3 Step Ball Bearing Slides
- Comfort Grip Handle
- Key Lock



\$1643.50

\$1890⁰³ inc GST

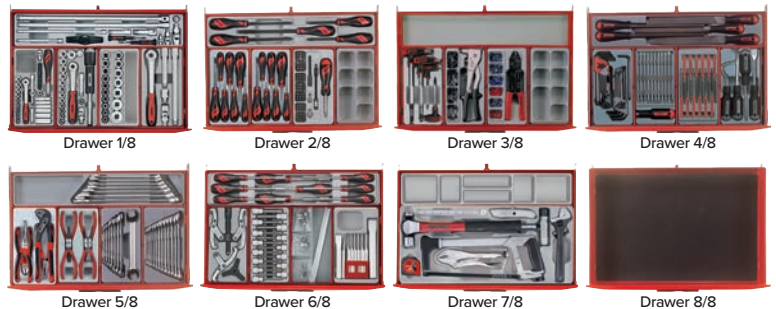
- All the tools are laid out in three colour pre-cut high-density EVA foam modules with each tool having its own place
- Clearly shows if any tools are not in their correct place to prevent losing tools or leaving them in the work piece
- Supplied in a red TengTools 26" 7 drawer Classic roller cabinet(TCW707EV)
- A comprehensive selection of tools using just 3 of the available 7 drawers ensuring that space is still available to add to the kit if needed

546 Piece Technicians Metric Tool Kit

Code No. TCMM546N



- 546** Pieces
- 8 Drawer
- 26" Wide Cabinet
- Heavy Gauge Steel
- 5 Step Rust Protection
- 5" Castor Wheels with Brakes
- 3 Step Ball Bearing Slides
- Comfort Grip Handle
- Combination Lock



\$2849.50

\$3276⁹³ inc GST

- A complete tool kit covering the requirements of most users
- All the tools are laid out in individual tool modules using the TengTools Tool Control system
- Easy to see if any tools have been mislaid or lost helping to prevent leaving them with the work piece
- Supplied in a red TengTools 26" 8 drawer roller cabinet
- A comprehensive selection of tools using 7 of the available 8 drawers ensuring that space is still available to add to the kit if needed

3 Drawer 8 Series Middle (Stacker) Tool Box

Code No. TC803N



- 3 Drawer
- 26" Wide Cabinet
- 3 Step Ball Bearing Slides
- Comfort Grip Handle
- Heavy Gauge Steel
- Combination Lock
- 5-Step Rust Protection

- Each full width drawer is suitable for holding 4 TengTools TC1 modules
- Supplied with EVA drawer mats and plastic trimmed handles
- Drawers have ball bearing slides for a smoother and more reliable opening and closing action
- Supplied with rubber feet to prevent it from sliding and to avoid scratching
- Use with the tool modules from the TT Series or FOAM Series in the TengTools Tool Control system to build your ultimate tool kit

	Width mm	Depth mm	Height mm	Capacity kg	Drawer Thickness
Overall	660	305	250		0.7mm
Drawer 1	569	275	50	30	0.8mm
Drawer 2	569	275	50	30	
Drawer 3	569	275	75	30	13kg
					Body Frame Thickness
					Weight

\$329.00

\$378.35 inc GST

3 Drawer 8 Series Middle (Stacker) Tool Box

Code No. TC803SV



- 3 Drawer
- 26" Wide Cabinet
- 3 Step Ball Bearing Slides
- Heavy Gauge Steel
- 5-Step Rust Protection
- Key Lock

- Each full width drawer is suitable for holding 4 TengTools TC1 modules
- Drawers have ball bearing slides for a smoother and more reliable opening and closing action
- Supplied with rubber feet to prevent it from sliding and to avoid scratching
- Use with the tool modules from the TT Series or FOAM Series in the TengTools Tool Control system to build your ultimate tool kit

	Width mm	Depth mm	Height mm	Capacity kg	Drawer Thickness
Overall	660	305	250		0.7mm
Drawer 1	569	275	50	30	0.8mm
Drawer 2	569	275	50	30	
Drawer 3	569	275	75	30	13kg
					Body Frame Thickness
					Weight

\$291.00

\$334.65 inc GST

6 Drawer 8 Series Top Box

Code No. TC806NF



- Drop front with the TengTools logo to cover the drawers when the box is closed
- Each full width drawer is suitable for holding 4 TengTools TC1 modules
- Supplied with an EVA drawer mat and plastic trimmed handle
- A handy lightweight plastic and aluminium tote tray is included
- Drawers have ball bearing slides for a smoother and more reliable opening and closing action
- Supplied with rubber feet to prevent it from sliding and to avoid scratching
- Use with the tool modules from the TT Series or FOAM Series in the TengTools Tool Control system to build your ultimate tool kit

\$503.00

\$578.45 inc GST

- 6 Drawer
- 26" Wide Box
- 3 Step Ball Bearing Slides
- Comfort Grip Handle
- Heavy Gauge Steel
- Combination Lock
- 5-Step Rust Protection

	Width mm	Depth mm	Height mm	Capacity kg	Drawer Thickness
Overall	660	305	375		0.7mm
Drawer 1	170	275	50	8	0.8mm
Drawer 2	170	275	50	8	
Drawer 3	170	275	50	8	
Drawer 4	569	275	50	30	
Drawer 5	569	275	50	30	
Drawer 6	569	275	75	30	23.4kg
					Body Frame Thickness
					Weight

9 Drawer SV Series Top Tool Box

Code No. TC809SV



- Drop front with the TengTools logo to cover the drawers when the box is closed
- Each full width drawer is suitable for holding 4 TengTools TC1 modules or equivalent
- Drawers have ball bearing slides for a smoother and more reliable opening and closing action
- Supplied with rubber feet to prevent it from sliding and to avoid scratching

\$579.00

\$665.85 inc GST

- 27kg
- 9 Drawer
- 3 Step Ball Bearing Slides
- Heavy Gauge Steel
- Key Lock
- 5-Step Rust Protection

	Width mm	Depth mm	Height mm	Capacity kg
Overall	660	307	427	
Drawer 1-6	170	275	50	8
Drawer 7-8	569	275	50	20
Drawer 9	569	275	75	20

6 Drawer SV Series Top Tool Box

Code No. TC806SV



- Drop front with the TengTools logo to cover the drawers when the box is closed
- Each full width drawer is suitable for holding 4 TengTools TC1 modules or equivalent
- Drawers have ball bearing slides for a smoother and more reliable opening and closing action
- Supplied with rubber feet to prevent it from sliding and to avoid scratching
- Use with the tool modules from the TT Series or FOAM Series in the TengTools Tool Control system to build your ultimate tool kit

\$390.00

\$448.50 inc GST

- 6 Drawer
- 26" Wide Box
- 3 Step Ball Bearing Slides
- Heavy Gauge Steel
- 5-Step Rust Protection
- Key Lock

	Width mm	Depth mm	Height mm	Capacity kg	Drawer Thickness
Overall	660	305	375		0.7mm
Drawer 1	170	275	50	8	0.8mm
Drawer 2	170	275	50	8	
Drawer 3	170	275	50	8	
Drawer 4	569	275	50	30	
Drawer 5	569	275	50	30	
Drawer 6	569	275	75	30	23.4kg
					Body Frame Thickness
					Weight

5 Drawer 37" 8 Series Top Box with Lid

Code No. TC205NF



- Each full width drawer is suitable for holding 4 TengTools TC1 modules together with a TCX4 module and a TCX2 module
- Supplied with EVA drawer mats and plastic trimmed handles
- Drawers have ball bearing slides for a smoother and more reliable opening and closing action
- Use with the tool modules from the TT Series or FOAM Series in the TengTools Tool Control system to build your ultimate tool kit

\$1369.00

\$1574.35 inc GST

- 5 Drawer
- 37" Wide Box
- 3 Step Ball Bearing Slides
- Comfort Grip Handle
- Heavy Gauge Steel
- 5-Step Rust Protection
- Combination Lock

	Width mm	Depth mm	Height mm	Capacity kg	Drawer Thickness
Overall	943	455	483		1mm
Drawer 1	860	380	50	25	1.2mm
Drawer 2	860	380	50	25	
Drawer 3	860	380	50	25	
Drawer 4	860	380	75	25	
Drawer 5	860	380	75	25	56.7kg
					Body Frame Thickness
					Weight

7 Drawer 8 Series Roller Cabinet

Code No. TCW807N



- Five 75mm deep drawers & two 150mm deep drawers for storing large items
- Each drawer is suitable for holding 4 TengTools TC1 modules plus a TCX4 module
- Supplied with an ABS top mat and EVA drawer mats in each drawer
- Drawers have ball bearing slides for a smoother and more reliable opening and closing action
- Use with the tool modules from the TT Series or FOAM Series in the TengTools Tool Control system to build your ultimate tool kit

\$1043.00

\$1199.45 inc GST

- 7 Drawer
- 5" Castor Wheels with Brakes
- 26" Wide Cabinet
- 3 Step Ball Bearing Slides
- Heavy Gauge Steel
- Comfort Grip Handle
- 5-Step Rust Protection
- Combination Lock

Drawer Thickness		Width mm	Depth mm	Height mm	Capacity kg
1mm	Cabinet	670	460	813	
Body Frame Thickness					
1.2 / 1.0mm	Cabinet + Wheels	670	460	960	
Weight					
64kg	Drawer 1-5	575	380	75	30
	Drawer 6-7	575	380	150	30

7 Drawer EV Series Roller Cabinet

Code No. TCW707EV



- Five 75mm deep drawers and two 150mm deep for storing larger items
- Each drawer is suitable for holding 4 TengTools TC1 modules plus a TengTools TCX4 module
- Drawers have ball bearing slides for a smoother and more reliable opening and closing action
- Use with the tool modules from the TT Series or FOAM Series in the TengTools Tool Control system to build your ultimate tool kit

\$842.00

\$968.30 inc GST

- 7 Drawer
- 5" Castor Wheels with Brakes
- 26" Wide Cabinet
- 3 Step Ball Bearing Slides
- Heavy Gauge Steel
- Key Lock
- 5-Step Rust Protection

Drawer Thickness		Width mm	Depth mm	Height mm	Capacity kg
1mm	Cabinet	670	460	813	
Body Frame Thickness					
1.2 / 1.0mm	Cabinet + Wheels	670	460	960	
Weight					
64kg	Drawer 1-5	575	380	75	30
	Drawer 6-7	575	380	150	30

10 Drawer 8 Series Roller Cabinet

Code No. TCW810N



- Six 50mm deep drawers, three 75mm deep drawers and one 150mm deep drawer for storing large items
- Each drawer is suitable for holding 4 TengTools TC1 modules plus a TengTools TCX4 module
- Supplied with an ABS top mat and EVA drawer mats in each drawer
- Drawers have ball bearing slides for a smoother and more reliable opening and closing action
- Use with the tool modules from the TT Series or FOAM Series in the TengTools Tool Control system to build your ultimate tool kit

\$1199.00

\$1378.85 inc GST

- 10 Drawer
- 5" Castor Wheels with Brakes
- 26" Wide Cabinet
- 3 Step Ball Bearing Slides
- Heavy Gauge Steel
- Comfort Grip Handle
- 5-Step Rust Protection
- Combination Lock

Drawer Thickness		Width mm	Depth mm	Height mm	Capacity kg
1mm	Cabinet	670	460	813	
Body Frame Thickness					
1.2 / 1.0mm	Cabinet + Wheels	670	460	960	
Weight					
69kg	Drawer 1-6	575	380	50	30
	Drawer 7-9	575	380	75	30
	Drawer 10	575	380	150	30

3 Drawer 8 Series Roller Cabinet

Code No. TCW803N



- Two 75mm deep drawers and one 150mm deep for storing larger items
- Storage compartment in the base fitted with a TengTools combination lock for secure storage of larger items
- Low height making it ideal for use beneath a low workbench
- Each drawer is suitable for holding 4 TengTools TC1 modules plus a TengTools TCX4 module
- Supplied with an ABS top mat and EVA drawer mats in each drawer
- Drawers have ball bearing slides for a smoother and more reliable opening and closing action
- Use with the tool modules from the TT Series or FOAM Series in the TengTools Tool Control system to build your ultimate tool kit

\$670.50

\$771.08 inc GST

- 3 Drawer
- 4" Castor Wheels with Brakes
- 26" Wide Cabinet
- 3 Step Ball Bearing Slides
- Heavy Gauge Steel
- 5-Step Rust Protection
- Combination Lock

Drawer Thickness		Width mm	Depth mm	Height mm	Capacity kg
1mm	Cabinet	670	460	656	
	Cabinet + Wheels	670	460	770	
Body Frame Thickness					
1.2 / 1.0mm	Drawer 1	575	380	75	30
	Drawer 2	575	380	75	30
	Drawer 3	575	380	150	30
Weight					
44kg	Base Storage	610	420	250	

6 Drawer 26" Pro Low Height Cabinet

Code No. TCW806N



- Five 75mm deep drawers and one 150mm deep drawer for storing large items
- Low height making it ideal for use beneath a low workbench
- Each drawer is suitable for holding 4 TengTools TC1 modules plus a TengTools TCX4 module
- Supplied with an ABS top mat and EVA drawer mats in each drawer
- Drawers have ball bearing slides for a smoother and more reliable opening and closing action
- Use with the tool modules from the TT Series or FOAM Series in the TengTools Tool Control system to build your ultimate tool kit

\$934.00

\$1074.10 inc GST

- 6 Drawer
- 4" Castor Wheels with Brakes
- 26" Wide Cabinet
- 3 Step Ball Bearing Slides
- Heavy Gauge Steel
- Comfort Grip Handle
- 5-Step Rust Protection
- Combination Lock

Drawer Thickness		Width mm	Depth mm	Height mm	Capacity kg
1mm	Cabinet	670	460	656	
Body Frame Thickness					
1.2/10mm	Cabinet + Wheels	670	380	770	
Weight					
54kg	Drawer 1-5	575	380	75	30
	Drawer 6	575	380	150	30

6 Drawer 8 Series 53" Wagon with Wooden Top

Code No. TCW806LN



- Three 65mm deep drawers, one 100mm deep and two 150mm deep drawers for storing large items
- Each drawer is suitable for holding 8 TengTools TC1 modules plus 2 TengTools TCX4 modules
- Supplied with an EVA mat in each drawer
- Drawers have ball bearing slides for a smoother and more reliable opening and closing action
- Supplied with a wooden top plate to create a hard wearing work surface
- Use with the tool modules from the TT Series or FOAM Series in the TengTools Tool Control system to build your ultimate tool kit

\$2702.00

\$3107.30 inc GST

- 6 Drawer
- 6" Castor Wheels with Brakes
- 53" Wide Cabinet
- Single Drawer Opening
- Heavy Gauge Steel
- Comfort Grip Handle
- 5-Step Rust Protection
- Combination Lock

Drawer Thickness		Width mm	Depth mm	Height mm	Capacity kg
1mm	Cabinet	1350	460	767	
Body Frame Thickness					
1.2mm	Cabinet + Wheels	1350	460	937	
Weight					
144.5kg	Drawer 1-3	1215	380	65	40
	Drawer 4	1215	380	100	40
	Drawer 5-6	1215	380	150	40

A MODULAR SYSTEM TH

Our tool sets are available in different sizes (1-4 & X2-X4). These can be combined to fit perfectly in 940 or 1

CHOOSE YOUR TOOL TRAYS

CUSTOMISE YOUR KIT

Buy Any 6 x TT Trays & Get One **FREE BONUS TC-6T**

TENG TOOLS CARRYING CASE
Part# TC-6T

BONUS



Reversible Ratchet Combination Spanner Set

Code No. TT6511R

11 Pieces

mm

\$430.00

Sizes: 8, 10, 11, 12, 13, 14, 15, 16, 17, 18 & 19mm **\$494.50 inc GST**

Vinyl Grip Plier Set

Code No. TT440Q

4 Pieces

\$215.50

6" Side Cutting, 7" Heavy Duty Combination, 8" Long Nose & 10" Water Pump Quick Set **\$247.83 inc GST**

Impact Bits Set

Code No. TTBS53

53 Pieces

1/4" Drive

8, 10 & 13

Length 30mm

Length 50mm

Length 89mm

60mm Impact magnetic bit holder, 60mm Impact quick chuck bit holder **\$175.00**

\$201.25 inc GST

Screwdriver Set

Code No. TT917N

7 Pieces

\$93.50

3x75, 5.5x75 & 6.5x100mm

PH0x75, PH1x75 & PH2x100

PZ2x100mm **\$107.53 inc GST**

Adjustable Wrench Set

Code No. TTADJ04

4 Pieces

mm

TPR

\$221.50

Sizes: 6" (Cap. 24mm), 8" (Cap. 28mm), 10" (Cap. 33mm) & 8" Wide Jaw (Cap. 38mm) **\$254.73 inc GST**

Punch & Chisel Set

Code No. TTPC09

9 Pieces

\$129.00

150mm Punches:
Centre - 5mm
Parallel - 3, 4, 5, 6, 7 & 8mm

Flat cold chisels:
150mm - Width: 19mm
200mm - Width: 25mm **\$148.35 inc GST**

Hex & TX Ball End Key Set

Code No. TTHT28

28 Pieces

mm AF

\$136.00

1.5, 2, 2.5, 3, 4, 5, 6, 7, 8 & 10mm

5/64", 3/32", 1/8", 5/32", 3/16", 7/32", 1/4", 5/16" & 3/8"

TX8, TX9, TX10, TX15, TX20, TX25, TX27, TX30 & TX40 **\$156.40 inc GST**

T Handle Hex Driver Set

Code No. TTHEX7

7 Pieces

mm

\$97.50

Ball Point T-Handle Hex Drivers:
100mm long: 2.5, 3 & 4mm
150mm long: 5, 6 & 7mm
190mm long: 8mm **\$112.13 inc GST**

TPR Grip Plier Set

Code No. TT440-T

4 Pieces

TPR

\$184.50

6" Side Cutter, 7" Combination, 8" Long Nose & 10" Water Pump **\$212.18 inc GST**

WHAT FITS ALL STORAGE

fits into your chosen storage solution, regardless of whether you have a storage that is portable, 660, 346mm.

Socket & Accessories Set TT

Code No. TT3819

19 Pieces
3/8" DRIVE
mm

8, 9, 10, 11, 12, 13, 14, 15, 16, 17, 18, 19 & 22mm

72 Teeth Ratchet, Universal Joint, 3" Wobble extension bar, 10" spinner Handle, Coupler adaptor, 1/2"Fx3/8" T bar adaptor

\$179.00
\$205.85 inc GST

Combination Spanner Set TT

Code No. TT1236

12 Pieces
mm

Sizes: 8, 9, 10, 11, 12, 13, 14, 15, 16, 17, 18, 19 mm

\$111.00
\$127.65 inc GST

Ratcheting Screwdriver Bit Set TT

Code No. TTMD74

74 Pieces

Ratcheting bits handle, 6" flexible extension, 4" extension, 1/4" M x 1/4" hex coupler adaptor, 1/4" F x 1/4" hex coupler adaptor
1/4" Hex bits: Length 25mm

\$110.00
\$126.50 inc GST

Socket & Accessory Set TED

Code No. TED1489

89 Pieces
1/4" DRIVE
mm

72 Teeth ratchet, Universal Joint, Spinner handle, 2" & 4" Extension bars, Coupler adaptor, 3/8" F x 1/4" M T-bar adaptor, 1/4" M x 1/4" Hex adaptor
6 point sockets:
Reg: 4, 5, 5.5, 6, 7, 8, 9, 10, 11, 12 & 13mm
Deep: 4, 5, 5.5, 6, 7, 8, 9, 10, 12 13mm
1/4" Drive Bit Sockets:

\$257.50
\$296.13 inc GST

1000V VDE Plier Set TED

Code No. TEDV440

4 Pieces
TPR
DYE

6" Side Cutter, 8" Long Nose, 8" Combination & 6" Wire Stripping

\$231.00
\$265.65 inc GST

Flex Handle Set TEX

Code No. TEXBR03

3 Pieces
1/4" DRIVE
3/8" DRIVE
1/2" DRIVE

• 1/4" 200mm
• 3/8" 300mm
• 1/2" 400mm

\$231.00
\$265.65 inc GST

Long Arm Ratchet Flex Head Set TEX

Code No. TEXRF03

3 Pieces
1/4" DRIVE
3/8" DRIVE
1/2" DRIVE

• 1/4" - 43 Teeth - 200mm
• 3/8" - 41 Teeth - 300mm
• 1/2" - 45 Teeth - 400mm

\$285.50
\$328.33 inc GST

Long Arm Ratchet Set TEX

Code No. TEXRL03

3 Pieces
1/4" DRIVE
3/8" DRIVE
1/2" DRIVE

• 1/4" - 43 Teeth - 200mm
• 3/8" - 41 Teeth - 300mm
• 1/2" - 45 Teeth - 400mm

\$247.50
\$284.63 inc GST

Torque Wrench & Breaker Bar Set TTX

Code No. TTX2493

2 Pieces
1/2" DRIVE

• Torque Range: 40-210Nm
• 425mm Power Bar

\$260.50
\$299.58 inc GST

Flex Handle Set TT

Code No. TTXBR03

3 Pieces
1/4" DRIVE
3/8" DRIVE
1/2" DRIVE

• 1/4" 200mm
• 3/8" 300mm
• 1/2" 400mm

\$215.00
\$247.25 inc GST

Long Arm Ratchet Flex Head Set TT

Code No. TTXRF03

3 Pieces
1/4" DRIVE
3/8" DRIVE
1/2" DRIVE

• 1/4" - 43 Teeth - 200mm
• 3/8" - 41 Teeth - 300mm
• 1/2" - 45 Teeth - 400mm

\$267.00
\$307.95 inc GST

Long Arm Ratchet Set TT

Code No. TTXRL03

3 Pieces
1/4" DRIVE
3/8" DRIVE
1/2" DRIVE

• 1/4" - 43 Teeth - 200mm
• 3/8" - 41 Teeth - 300mm
• 1/2" - 45 Teeth - 400mm

\$233.00
\$267.95 inc GST

1/2" Drive Metric Regular Impact Socket Set

Code No. T9240

40 Pieces 1/2" DRIVE mm



Reg & Deep: 10, 11, 12, 13, 14, 15, 16, 17, 18, 19, 21, 22, 24, 27, 28, 29, 30 & 32mm

• Retaining pins (2 pcs) and rings (2 pcs) included

\$449.00

\$516³⁵ inc GST

105 Pc 1/2" Dr. Metric H/Duty Vehicle Tool Set

Code No. THDV105

This set is ideal for the most common maintenance tasks. All tools are fully organised and everything has its own specific place making it easy to identify if any tools are missing when packing up after the job is done. The compact, robust case is easy to grab when a job needs to be done!

105 Pieces

1/2" DRIVE Reg: 8-32mm Hex: 5-19mm

8-32mm

1-

Vinyl Grip: Side cutters, HD Combination, Quick Set Water Pump

6" & 12" Adjustable Wrenches

1/2" Ratchet & 5" Extension, 17" Flex

Handle, 24oz Ball Pein Hammer

Hex Key Sets

Bits Driver & Bits Set

Magnetic Pick Up Tool with Pen

125° Hook Tool



\$764.00

\$878⁶⁰ inc GST

Socket & Tool Set

Code No. TM095

95 Pieces 1/4" DRIVE 1/2" DRIVE mm

1/4" DRIVE Flip reverse ratchet, Universal Joint, 2" & 4" Extension bars, Sliding T bar, Spinner handle, Coupler adaptor, 50mm Magnetic bit holder

1/2" DRIVE Flip reverse ratchet, 5" & 10" Extension bars, 5/16" Hex coupler, 3/8"Fx1/2" M T bar adaptor, Universal Joint

1/4" DRIVE Reg: 4-13mm Deep: 4-13mm

1/2" DRIVE Reg: 10-32mm

3 & 4mm PZ1 & PZ2 PH1 & PH2

8, 10, 12, 13, 14 & 17mm

1/4" Hex Bits

5/16" Hex bits



\$338.00

\$388⁷⁰ inc GST

39 Pc 3/8" Dr. Metric Regular / Deep Socket Set

Code No. T3839

3/8" DRIVE 39 Pieces mm

Regular: 8, 9, 10, 11, 12, 13, 14, 15, 16, 17, 18, 19, 21 & 22mm
Deep: 8, 10, 12, 13, 17 & 19mm

16 & 21mm Spark Plug Sockets

1/4" Hex Bits

4 & 5.5 TX10, TX15 & TX20 5 & 6 PH1 & PH2

PZ1 & PZ2

• Flip reverse ratchet, Universal joint, 3" Wobble extension bar, 6" Extension Bar
• Coupler adaptor, 1/2"Fx3/8" M T bar adaptor



\$133.00

\$152⁹⁵ inc GST

21 Pc 1/2" Dr. Metric Regular Socket Set

Code No. T1221

1/2" DRIVE 21 Pieces mm



10, 11, 12, 13, 14, 15, 16, 17, 18, 19, 21, 22, 24, 27, 30 & 32mm

• Flip reverse ratchet, 2 1/2" & 6" Extension Bars
• Universal Joint, 3/8"Fx1/2" M T bar adaptor

\$173.00

\$198⁹⁵ inc GST

36 Pc 1/4" Dr. Metric Regular / Deep Socket Set

Code No. T1436

1/4" DRIVE 36 Pieces mm

Regular: 4, 5, 5.5, 6, 7, 8, 10, 11, 12 & 13mm
Deep: 6, 7, 8, 10, 12 & 13mm

1/4" Hex Bits

4 & 5.5 TX10, TX15 & TX20

PZ1 & PZ2 PH1 & PH2 5 & 6



\$79.00

\$90⁸⁵ inc GST

ITM Professional Mechanics Bench Vice



- Features**
- Rugged all cast iron construction.
 - Integrated anvil for shaping and beating.
 - Extra heavy-duty sliding jaw and large diameter screw.
 - 50 ± 5 HRC hardened carbon steel jaws

Part No.	Jaw Width	Max Jaw Opening	Jaw Depth	Weight	ex GST	inc GST
TM100-075	75mm	75mm	50mm	7.5kg	\$95.50	\$109.83
TM100-100	100mm	115mm	55mm	10kg	\$186.00	\$213.90
TM100-125	125mm	140mm	70mm	15.5kg	\$236.00	\$271.40
TM100-150	150mm	175mm	80mm	18kg	\$325.50	\$374.33
TM100-200	200mm	200mm	100mm	31kg	\$506.00	\$581.90

ITM Shop Bench Vice Cast Iron

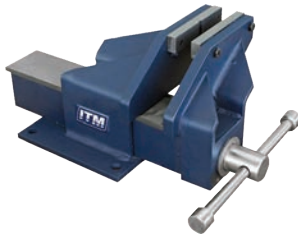


- Features**
- Hardened steel jaws.
 - Close grained cast iron body

Part No.	Jaw Width	Max Jaw Opening	Jaw Depth	Weight	ex GST	inc GST
TM098-100	100mm	110mm	57mm	7kg	\$164.00	\$188.60
TM098-125	125mm	125mm	72mm	10kg	\$194.00	\$223.10
TM098-150	150mm	150mm	79mm	14kg	\$224.00	\$257.60
TM098-200	200mm	200mm	79mm	22kg	\$321.80	\$370.07

ITM Fabricated Steel Bench Vice Offset Jaw

These extra heavy Duty fabricated bench vices are manufactured from heavy steel plate and designed for use in industrial workshops. The sliding jaw and large diameter screw allows for precise and smooth operation. The precision machined knurled jaws, with V-Groove are replaceable giving these vices a long life while being durable and reliable.



Jaw Type: Offset

	TM104-100	TM104-125	TM104-150	TM104-200
Jaw Width	100mm	125mm	150mm	200mm
Max Jaw Opening	120mm	140mm	170mm	265mm
Jaw Depth	70mm	95mm	105mm	135mm
Weight	11.2kg	20.3kg	25kg	60kg
Base (L x W)	165x150mm	200x180mm	230x200mm	300x250mm
Hole Centre (L x W)	135x115mm	170x150mm	200x170mm	255x200mm
ex GST	\$224.00	\$354.00	\$457.00	\$896.50
inc GST	\$257.60	\$407.00	\$525.55	\$1030.98

ITM Chain Pipe Vice

Code No. TM115-230

- Features**
- Superb chain pipe vice with hardened steel jaws & close grained cast iron body.
 - Offers excellent grip for irregular shapes due to flexibility of the chain.
 - Can be rapidly tightened to provide a very strong grip on the pipe.

- Specifications**
- Minimum pipe diameter: 40mm
 - Maximum pipe diameter: 230mm
 - Chain length: 850mm
 - Spindle thread: M16x2
 - Vice Dimensions: 292 x 220 x 128mm
 - Weight: 13.3kg



\$596.50

\$685.98 inc GST



ITM Tow Bar Hitch Vice

Code No. TM113-150



\$379.00

\$435.85 inc GST

- FEATURES**
- Quickly and easily mounts to any 2" tow hitch
 - Also bench mountable (148mm jaw opening)
 - Extra heavy-duty hardened steel jaws
 - Integrated anvil for shaping and beating

- SPECIFICATIONS**
- Jaw width: 150mm
 - Jaw opening: 120mm
 - Jaw depth: 127mm
 - Pipe Diameter: 16 - 90mm
 - Weight: 12.74kg



ITM Ratchet Podger Wrenches

- Premium quality drop forged chrome vanadium steel
- Dual sized ratchet head with reversible lever action



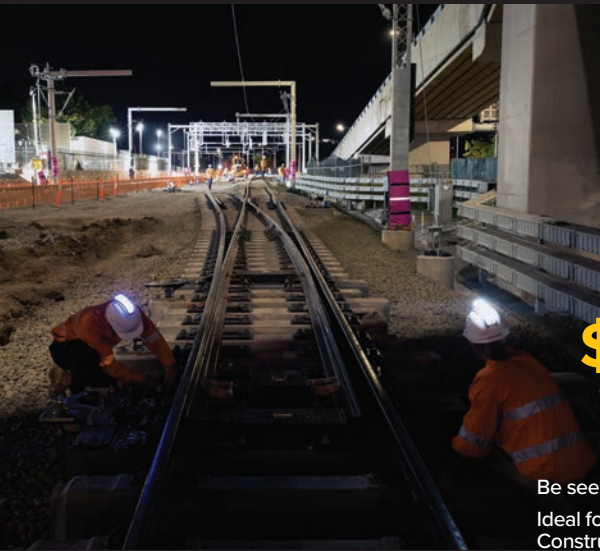
Part No	Size	Length	ex GST	inc GST
TM632-1012	10 x 12mm	240mm	\$51.00	\$58.65
TM632-1113	11 x 13mm	240mm	\$51.00	\$58.65
TM632-1317	13 x 17mm	280mm	\$54.00	\$62.10
TM632-1415	14 x 15mm	280mm	\$54.00	\$62.10
TM632-1417	14 x 17mm	280mm	\$54.00	\$62.10
TM632-1618	16 x 18mm	315mm	\$57.50	\$66.13
TM632-1719	17 x 19mm	315mm	\$49.00	\$56.35
TM632-1721	17 x 21mm	315mm	\$57.50	\$66.13
TM632-1824	18 x 24mm	315mm	\$57.50	\$66.13
TM632-1921	19 x 21mm	315mm	\$57.50	\$66.13
TM632-1922	19 x 22mm	315mm	\$49.00	\$56.35
TM632-1924	19 x 24mm	315mm	\$50.50	\$58.08
TM632-2124	21 x 24mm	315mm	\$51.50	\$59.23
TM632-2126	21 x 26mm	360mm	\$85.50	\$98.33
TM632-2127	21 x 27mm	360mm	\$85.50	\$98.33
TM632-2224	22 x 24mm	360mm	\$85.50	\$98.33
TM632-2427	24 x 27mm	360mm	\$85.50	\$98.33
TM632-2430	24 x 30mm	450mm	\$98.00	\$112.70
TM632-2632	26 x 32mm	450mm	\$115.00	\$132.25
TM632-2730	27 x 30mm	450mm	\$115.00	\$132.25
TM632-2732	27 x 32mm	450mm	\$115.00	\$132.25
TM632-3032	30 x 32mm	450mm	\$115.00	\$132.25
TM632-3036	30 x 36mm	450mm	\$116.50	\$133.98
TM632-3236	32 x 36mm	450mm	\$116.50	\$133.98
TM632-3641	36 x 41mm	450mm	\$119.00	\$136.65
TM632-4146	41 x 46mm	500mm	\$203.50	\$234.03
TM632-4155	41 x 55mm	500mm	\$203.50	\$234.03
TM632-4650	46 x 50mm	500mm	\$203.50	\$234.03

LIFE HAWK

BE SAFE, BE SEEN

Life Saving LED Light Device with Hard Hat

Part # LH002



\$139.00
\$159.⁸⁵ inc GST

Be seen and identified at all times on the job site.

Ideal for working in: Multiple groups working on one site, Foggy Environments, Construction, Night Shift, Railway, Mining, Roading & Forestry.

Features

- 3M Double Sided Tape for easy and firm installation
- ON/OFF Power Switch and Lighting mode switch
- USB-C Charging Port
- Easy Click IN and Out
- Upto 800M Visibility
30 hours Lighting Time

compatible with head lamp

Lighting Modes

- Constant on
- Slow Flash
- Fast Flash
- Centre to End Stroke
- End to End Stroke
- EMERGENCY SOS

8 Colours



ITM Ratchet Tie-Downs Single Pack

- Heavy duty 100% polyester
- Long life, highly wear resistance and durable for demanding applications
- Hook & Keeper at both ends
- Tested & certified to AS/NZS 4380



FROM \$14.50
\$16.⁶⁸ inc GST

Part No.	Width	Length	Lashing Capacity	ex GST	inc GST
TM9401-02505	25mm	5m	750kg	\$14. ⁵⁰	\$16. ⁶⁸
TM9401-03506	35mm	6m	1500kg	\$22. ⁵⁰	\$25. ⁸⁸
TM9401-07512	75mm	12m	5000kg	\$115. ⁵⁰	\$132. ⁸³

ITM Ratchet Strap - Single Pack

Code No. TM9401-05009

Feature

- Heavy duty 100% polyester
- Long life, highly wear resistance and durable for demanding applications
- Hook & Keeper at both ends
- Tested & certified to AS/NZS 4380

Specification

- Width: 50mm
- Length: 9m
- Lashing Capacity: 2500kg



\$26.50
\$30.⁴⁸ inc GST

ITM Ratchet Tie-Downs 38mm 2 Pack

Code No. TM9402-03804

- Heavy duty 100% polyester
- Long life, highly wear resistance and durable for demanding applications
- Hook & Keeper at both ends
- Tested & certified to AS/NZS 4380
- Width: 38mm
- Length: 4.5m
- Lashing Capacity: 600kg

\$36.00
\$41.⁴⁰ inc GST



ITM Chain Drum Lifter

Code No. TM9126-01005

Features

- 1000kg Rated capacity
- For lifting 20L, 60L & 205L drums
- Can be used to lift drums with and without lids
- Test certificate & user manual supplied
- Tested & certified to AS 3775.1

Specification

- Chain Length - 500mm
- Chain Size - 6x18mm
- Weight: 3.3kg

\$156.50
\$179.⁹⁸ inc GST



ITM Ratchet Tie-Downs 25mm 4 Pack

Code No. TM9404-02504

- Heavy duty 100% polyester
- Long life, highly wear resistance and durable for demanding applications
- Hook & Keeper at both ends
- Tested & certified to AS/NZS 4380
- Width: 25mm
- Length: 4m
- Lashing Capacity: 350kg

\$32.50
\$37.³⁸ inc GST



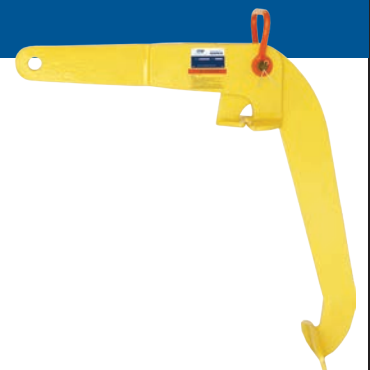
ITM Vertical Drum Lifter

Code No. TM9125-00600

Features

- 600kg Rated capacity
- Durable all steel construction
- Test certificate & user manual supplied
- Tested & certified to AS 4991
- Weight - 6.6kg

\$176.00
\$202.⁴⁰ inc GST



ITM Heavy Duty Chain Block Lifts

- Colour coded to W.L.L. for safety
- Load limited protection system
- Automatic double pawl braking system
- Hooks fitted with spring safety latches
- Grade 80 chain
- Tested & certified to AS 1418.2
- Test certificate supplied

FROM
\$191.00
\$219.65^{inc GST}



PART NO.	W.L.L. CAPACITY	STANDARD LIFT	PRICE	
			ex GST	inc GST
TM9020-00202	250kg (Grey)	2 Metre	\$191.00	\$219.65
TM9022-00503	500kg (White)	3 Metre	\$231.00	\$265.65
TM9022-00506	500kg (White)	6 Metre	\$297.00	\$341.55
TM9022-01003	1000kg (Violet)	3 Metre	\$265.00	\$304.75
TM9022-01006	1000kg (Violet)	6 Metre	\$329.00	\$378.35
TM9022-02003	2000kg (Green)	3 Metre	\$370.00	\$425.50
TM9022-02006	2000kg (Green)	6 Metre	\$437.50	\$503.13
TM9022-03003	3000kg (Yellow)	3 Metre	\$426.00	\$489.90
TM9022-03006	3000kg (Yellow)	6 Metre	\$565.50	\$650.33
TM9022-05003	5000kg (Red)	3 Metre	\$660.00	\$759.00
TM9022-05006	5000kg (Red)	6 Metre	\$798.50	\$918.28

ITM Lever Hoists

- 1.5m standard lift
- Colour coded to W.L.L. for safety
- Load limited protection system
- Automatic double pawl braking system
- Hooks fitted with spring safety latches
- Grade 80 chain
- Tested & certified to AS 1418.2
- Test certificate supplied

FROM
\$189.00
\$217.35^{inc GST}



PART NO.	W.L.L. CAPACITY	STANDARD LIFT	PRICE	
			ex GST	inc GST
TM9040-00201	250kg (Grey)	1.5 Metre	\$189.00	\$217.35
TM9040-00501	500kg (White)	1.5 Metre	\$239.00	\$274.85
TM9042-00701	750kg (White)	1.5 Metre	\$269.00	\$309.35
TM9042-01501	1500kg (Violet)	1.5 Metre	\$324.50	\$373.18
TM9042-03001	3000kg (Yellow)	1.5 Metre	\$471.50	\$542.23
TM9042-06001	6000kg (Brown)	1.5 Metre	\$710.00	\$816.50
TM9042-09001	9000kg (Orange)	1.5 Metre	\$1109.00	\$1275.35

ITM Push Girder Trolleys

- Durable all steel construction
- Colour coded to W.L.L. for safety
- Tested & certified to AS 1418.2
- Test certificate supplied



PART NO.	W.L.L. CAPACITY	BEAM WIDTH	PRICE	
			ex GST	inc GST
TM9100-00500	500kg (White)	64-152mm	\$145.00	\$166.75
TM9100-01000	1000kg (Violet)	64-203mm	\$196.50	\$225.98
TM9100-02000	2000kg (Green)	88-203mm	\$267.00	\$307.05
TM9100-03000	3000kg (Yellow)	100-305mm	\$416.00	\$478.40
TM9100-05000	5000kg (Red)	114-305mm	\$582.00	\$669.30

ITM Geared Girder Trolleys

- Durable all steel construction
- Colour coded to W.L.L. for safety
- 3m Chain Length
- Tested & certified to AS 1418.2
- Test certificate supplied



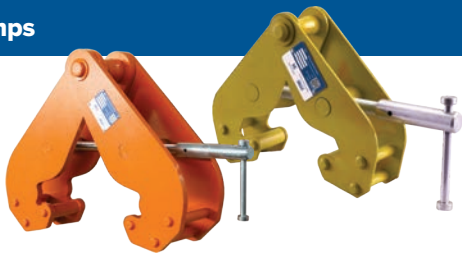
FROM
\$239.00
\$274.85^{inc GST}

PART NO.	W.L.L. CAPACITY	BEAM WIDTH	PRICE	
			ex GST	inc GST
TM9102-01000	1000kg (Violet)	64-152mm	\$239.00	\$274.85
TM9102-02000	2000kg (Green)	88-203mm	\$313.50	\$360.53
TM9102-03000	3000kg (Yellow)	88-203mm	\$471.50	\$542.23
TM9102-05000	5000kg (Red)	100-305mm	\$643.50	\$740.03
TM9102-10000	10000kg (Orange)	114-305mm	\$1603.00	\$1843.45

ITM Beam Clamps

- Durable all steel construction
- Colour coded to W.L.L. for safety
- Tested & certified to AS 4991

FROM
\$128.00
\$147.20^{inc GST}

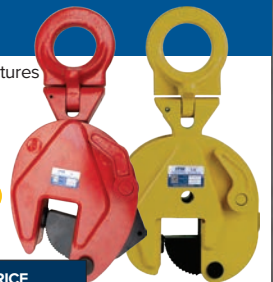


PART NO.	W.L.L. CAPACITY	BEAM WIDTH	PRICE	
			ex GST	inc GST
TM9121-01023	1000kg (Violet)	75-230mm	\$128.00	\$147.20
TM9121-02023	2000kg (Green)	75-230mm	\$143.50	\$165.03
TM9121-03032	3000kg (Yellow)	80-320mm	\$245.00	\$281.75
TM9121-05032	5000kg (Red)	90-320mm	\$274.00	\$315.10
TM9121-10032	10000kg (Orange)	90-320mm	\$450.00	\$517.50

ITM Vertical Lifting Clamps

- Suitable for vertical lifting of steel plates, beams & structures
- Locking device fitted for both open & closed positions
- Tested & certified to AS 4991

FROM
\$114.50
\$131.68^{inc GST}



PART NO.	W.L.L. CAPACITY	OPENING	PRICE	
			ex GST	inc GST
TM9122-00815	800kg (White)	15mm	\$114.50	\$131.68
TM9122-01620	1600kg (Violet)	20mm	\$198.50	\$228.28
TM9122-02025	2000kg (Green)	25mm	\$240.50	\$276.58
TM9122-03230	3200kg (Yellow)	30mm	\$386.00	\$443.90
TM9122-05050	5000kg (Red)	50mm	\$567.50	\$652.63

ITM 1000kg Rated Capacity

- Violet colour coded to W.L.L. for safety
- 0.5m to 10m lengths available



PART NO.	LENGTH	ex GST	inc GST
TM9160-01005	0.5M	\$7 ⁰⁰	\$8 ⁰⁵
TM9160-01010	1M	\$9 ⁵⁰	\$10 ⁹³
TM9160-01015	1.5M	\$11 ⁵⁰	\$13 ²³
TM9160-01020	2M	\$14 ⁵⁰	\$16 ⁶⁸
TM9160-01025	2.5M	\$14 ⁵⁰	\$16 ⁶⁸
TM9160-01030	3M	\$16 ⁵⁰	\$18 ⁹⁸
TM9160-01040	4M	\$18 ⁵⁰	\$21 ²⁸
TM9160-01050	5M	\$26 ⁵⁰	\$30 ⁴⁸
TM9160-01060	6M	\$32 ⁰⁰	\$36 ⁸⁰
TM9160-01080	8M	\$38 ⁰⁰	\$43 ⁷⁰
TM9160-01100	10M	\$47 ⁰⁰	\$54 ⁰⁵

FROM \$7⁰⁰
\$8⁰⁵ inc GST

ITM 2000kg Rated Capacity

- Green colour coded to W.L.L. for safety
- 1.0m to 10m lengths available



PART NO.	LENGTH	ex GST	inc GST
TM9160-02010	1M	\$13 ⁵⁰	\$15 ⁵³
TM9160-02015	1.5M	\$19 ⁵⁰	\$22 ⁴³
TM9160-02020	2M	\$22 ⁰⁰	\$25 ³⁰
TM9160-02025	2.5M	\$26 ⁵⁰	\$30 ⁴⁸
TM9160-02030	3M	\$26 ⁰⁰	\$29 ⁹⁰
TM9160-02040	4M	\$35 ⁰⁰	\$40 ²⁵
TM9160-02050	5M	\$48 ⁰⁰	\$55 ²⁰
TM9160-02060	6M	\$48 ⁵⁰	\$55 ⁷⁸
TM9160-02080	8M	\$75 ⁰⁰	\$86 ²⁵
TM9160-02100	10M	\$90 ⁵⁰	\$104 ⁰⁸

FROM \$13⁵⁰
\$15³⁰ inc GST

ITM 3000kg Rated Capacity

- Yellow colour coded to W.L.L. for safety
- Lengths available 1 - 12m



PART NO.	LENGTH	ex GST	inc GST
TM9160-03010	1M	\$18 ⁵⁰	\$21 ²⁸
TM9160-03015	1.5M	\$26 ⁵⁰	\$30 ⁴⁸
TM9160-03020	2M	\$22 ⁵⁰	\$25 ⁸⁸
TM9160-03025	2.5M	\$39 ⁵⁰	\$45 ⁴³
TM9160-03030	3M	\$38 ⁵⁰	\$44 ²⁸
TM9160-03040	4M	\$49 ⁵⁰	\$56 ⁹³
TM9160-03050	5M	\$70 ⁰⁰	\$80 ⁵⁰
TM9160-03060	6M	\$77 ⁰⁰	\$88 ⁵⁵
TM9160-03080	8M	\$111 ⁰⁰	\$127 ⁶⁵
TM9160-03100	10M	\$133 ⁰⁰	\$152 ⁹⁵
TM9160-03120	12M	\$157 ⁵⁰	\$181 ¹³

FROM \$18⁵⁰
\$8⁰⁵ inc GST

ITM 4000kg Rated Capacity

- Grey colour coded to W.L.L. for safety
- Lengths available 2 - 12m



PART NO.	LENGTH	ex GST	inc GST
TM9160-04020	2M	\$43 ⁵⁰	\$50 ⁹³
TM9160-04025	2.5M	\$53 ⁰⁰	\$60 ⁹⁵
TM9160-04030	3M	\$65 ⁰⁰	\$74 ⁷⁵
TM9160-04040	4M	\$77 ⁵⁰	\$89 ¹³
TM9160-04050	5M	\$94 ⁵⁰	\$108 ⁶⁸
TM9160-04060	6M	\$109 ⁰⁰	\$125 ³⁵
TM9160-04080	8M	\$151 ⁰⁰	\$173 ⁶⁵
TM9160-04100	10M	\$181 ⁵⁰	\$208 ⁷³
TM9160-04120	12M	\$224 ⁰⁰	\$257 ⁶⁰

FROM \$43⁵⁰
\$50⁰³ inc GST

ITM 5000kg Rated Capacity

- Red colour coded to W.L.L. for safety
- Lengths available 2 - 12m



PART NO.	LENGTH	ex GST	inc GST
TM9160-05020	2M	\$53 ⁰⁰	\$60 ⁹⁵
TM9160-05025	2.5M	\$66 ⁵⁰	\$76 ⁴⁸
TM9160-05030	3M	\$75 ⁰⁰	\$86 ²⁵
TM9160-05040	4M	\$96 ⁵⁰	\$110 ⁹⁸
TM9160-05050	5M	\$121 ⁰⁰	\$139 ¹⁵
TM9160-05060	6M	\$135 ⁵⁰	\$155 ⁸³
TM9160-05080	8M	\$179 ⁰⁰	\$205 ⁸⁵
TM9160-05100	10M	\$241 ⁰⁰	\$277 ¹⁵
TM9160-05120	12M	\$278 ⁵⁰	\$320 ²⁸

FROM \$53⁰⁰
\$60⁹⁵ inc GST

ITM 6000kg Rated Capacity

- Brown colour coded to W.L.L. for safety
- Lengths available 2 - 12m



PART NO.	LENGTH	ex GST	inc GST
TM9160-06020	2M	\$78 ⁵⁰	\$90 ²⁸
TM9160-06025	2.5M	\$93 ⁰⁰	\$106 ⁹⁵
TM9160-06030	3M	\$106 ⁵⁰	\$122 ⁴⁸
TM9160-06040	4M	\$133 ⁰⁰	\$152 ⁹⁵
TM9160-06050	5M	\$157 ⁵⁰	\$181 ¹³
TM9160-06060	6M	\$187 ⁵⁰	\$215 ⁶³
TM9160-06080	8M	\$241 ⁰⁰	\$277 ¹⁵
TM9160-06100	10M	\$301 ⁵⁰	\$346 ⁷³
TM9160-06120	12M	\$350 ⁰⁰	\$402 ⁵⁰

FROM \$78⁵⁰
\$90²⁸ inc GST

ITM 8000kg Rated Capacity

- Blue colour coded to W.L.L. for safety
- Lengths available 3 - 12m



PART NO.	LENGTH	ex GST	inc GST
TM9160-08030	3M	\$169 ⁵⁰	\$194 ⁹³
TM9160-08040	4M	\$212 ⁰⁰	\$243 ⁸⁰
TM9160-08050	5M	\$241 ⁰⁰	\$277 ¹⁵
TM9160-08060	6M	\$290 ⁵⁰	\$334 ⁰⁸
TM9160-08080	8M	\$375 ⁵⁰	\$431 ⁸³
TM9160-08100	10M	\$424 ⁰⁰	\$487 ⁶⁰
TM9160-08120	12M	\$508 ⁵⁰	\$584 ⁷⁸

FROM \$169⁵⁰
\$194⁹³ inc GST

ITM 10,000kg Rated Capacity

- Orange colour coded to W.L.L. for safety
- Lengths available 4 - 12m



PART NO.	LENGTH	ex GST	inc GST
TM9160-10040	4M	\$241 ⁰⁰	\$277 ¹⁵
TM9160-10060	6M	\$325 ⁵⁰	\$374 ³³
TM9160-10080	8M	\$424 ⁰⁰	\$487 ⁶⁰
TM9160-10100	10M	\$483 ⁰⁰	\$555 ⁴⁵
TM9160-10120	12M	\$580 ⁰⁰	\$667 ⁰⁰

FROM \$241⁰⁰
\$277¹⁵ inc GST

ITM 1000kg Rated Capacity



- Violet colour coded to W.L.L. for safety
- Lengths available 0.5 - 10m

PART NO.	LENGTH	ex GST	inc GST
TM9162-01005	0.5M	\$6.00	\$6.90
TM9162-01010	1M	\$11.50	\$13.23
TM9162-01015	1.5M	\$12.00	\$13.80
TM9162-01020	2M	\$16.00	\$18.40
TM9162-01025	2.5M	\$19.50	\$22.43
TM9162-01030	3M	\$20.00	\$23.00
TM9162-01035	3.5M	\$25.00	\$28.75
TM9162-01040	4M	\$22.50	\$25.88
TM9162-01050	5M	\$34.50	\$39.68
TM9162-01060	6M	\$41.50	\$47.73
TM9162-01080	8M	\$55.50	\$63.83
TM9162-01100	10M	\$69.50	\$79.93

FROM \$6.00
\$6.90 inc GST

ITM 2000kg Rated Capacity



- Green colour coded to W.L.L. for safety
- Lengths available 0.5 - 10m

PART NO.	LENGTH	ex GST	inc GST
TM9162-02005	0.5M	\$7.50	\$8.63
TM9162-02010	1M	\$14.00	\$16.30
TM9162-02015	1.5M	\$17.00	\$19.55
TM9162-02020	2M	\$21.00	\$24.15
TM9162-02025	2.5M	\$27.50	\$31.63
TM9162-02030	3M	\$29.00	\$33.35
TM9162-02040	4M	\$37.50	\$43.13
TM9162-02050	5M	\$53.00	\$60.95
TM9162-02060	6M	\$63.00	\$72.45
TM9162-02080	8M	\$91.00	\$104.65
TM9162-02100	10M	\$111.50	\$128.23

FROM \$7.50
\$8.63 inc GST

ITM 3000kg Rated Capacity

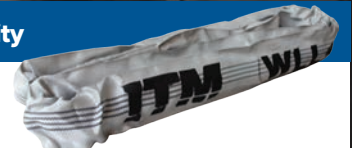


- Yellow colour coded to W.L.L. for safety
- Lengths available 1 - 10m

PART NO.	LENGTH	ex GST	inc GST
TM9162-03010	1M	\$17.00	\$19.55
TM9162-03015	1.5M	\$24.50	\$28.18
TM9162-03020	2M	\$26.50	\$30.48
TM9162-03025	2.5M	\$38.00	\$43.70
TM9162-03030	3M	\$35.00	\$40.25
TM9162-03040	4M	\$51.00	\$58.65
TM9162-03050	5M	\$73.50	\$84.53
TM9162-03060	6M	\$79.00	\$90.85
TM9162-03080	8M	\$118.00	\$135.70
TM9162-03100	10M	\$145.50	\$167.33

FROM \$17.00
\$19.55 inc GST

ITM 4000kg Rated Capacity



- Grey colour coded to W.L.L. for safety
- Lengths available 1 - 10m

PART NO.	LENGTH	ex GST	inc GST
TM9162-04010	1M	\$21.50	\$24.73
TM9162-04015	1.5M	\$31.50	\$36.23
TM9162-04020	2M	\$40.50	\$46.58
TM9162-04025	2.5M	\$53.00	\$60.95
TM9162-04030	3M	\$57.00	\$65.55
TM9162-04040	4M	\$73.00	\$83.95
TM9162-04050	5M	\$95.00	\$109.25
TM9162-04060	6M	\$114.00	\$131.30
TM9162-04080	8M	\$158.50	\$182.28
TM9162-04100	10M	\$201.50	\$231.73

FROM \$21.50
\$24.73 inc GST

ITM 5000kg Rated Capacity



- Red colour coded to W.L.L. for safety
- Lengths available 1 - 10m

PART NO.	LENGTH	ex GST	inc GST
TM9162-05010	1M	\$26.50	\$30.48
TM9162-05015	1.5M	\$38.00	\$43.70
TM9162-05020	2M	\$49.50	\$56.93
TM9162-05025	2.5M	\$60.50	\$69.58
TM9162-05030	3M	\$69.50	\$79.93
TM9162-05040	4M	\$91.00	\$104.65
TM9162-05050	5M	\$114.00	\$131.30
TM9162-05060	6M	\$133.00	\$152.95
TM9162-05080	8M	\$196.50	\$225.98
TM9162-05100	10M	\$241.00	\$277.15

FROM \$26.50
\$30.48 inc GST

ITM 6000kg Rated Capacity



- Brown colour coded to W.L.L. for safety
- Lengths available 1 - 10m

PART NO.	LENGTH	ex GST	inc GST
TM9162-06010	1M	\$30.00	\$34.50
TM9162-06020	2M	\$57.00	\$65.55
TM9162-06030	3M	\$82.50	\$94.88
TM9162-06040	4M	\$104.00	\$119.60
TM9162-06050	5M	\$133.00	\$152.95
TM9162-06060	6M	\$152.00	\$174.80
TM9162-06080	8M	\$230.00	\$264.50
TM9162-06100	10M	\$293.00	\$336.95

FROM \$30.00
\$34.50 inc GST

ITM 8000kg Rated Capacity

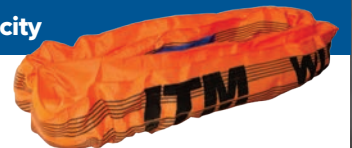


- Blue colour coded to W.L.L. for safety
- Lengths available 1 - 12m

PART NO.	LENGTH	ex GST	inc GST
TM9162-08010	1M	\$35.50	\$40.83
TM9162-08020	2M	\$63.00	\$72.45
TM9162-08030	3M	\$88.50	\$101.78
TM9162-08040	4M	\$139.50	\$160.43
TM9162-08050	5M	\$152.00	\$174.80
TM9162-08060	6M	\$190.00	\$218.50
TM9162-08080	8M	\$279.00	\$320.85
TM9162-08100	10M	\$368.00	\$423.20
TM9162-08120	12M	\$406.00	\$466.90

FROM \$35.50
\$40.83 inc GST

ITM 10,000kg Rated Capacity



- Orange colour coded to W.L.L. for safety
- Lengths available 1 - 12m

PART NO.	LENGTH	ex GST	inc GST
TM9162-10010	1M	\$44.00	\$50.60
TM9162-10020	2M	\$109.00	\$125.35
TM9162-10030	3M	\$114.00	\$131.30
TM9162-10040	4M	\$152.00	\$174.80
TM9162-10050	5M	\$214.50	\$246.68
TM9162-10060	6M	\$253.50	\$291.53
TM9162-10080	8M	\$317.00	\$364.55
TM9162-10100	10M	\$368.00	\$423.20
TM9162-10120	12M	\$495.00	\$569.25

FROM \$44.00
\$50.60 inc GST

ITM 1 Leg Chain Slings

1 LEG 8MM CHAIN

PART NO.	CHAIN LENGTH	W.L.L. DIRECT LOAD	ex GST	inc GST
TM9801-08010	1M	2.0 Tonne	\$139.00	\$159.85
TM9801-08020	2M	2.0 Tonne	\$169.00	\$194.35
TM9801-08030	3M	2.0 Tonne	\$189.00	\$217.35
TM9801-08060	6M	2.0 Tonne	\$269.00	\$309.35

1 LEG 10MM CHAIN

PART NO.	CHAIN LENGTH	W.L.L. DIRECT LOAD	ex GST	inc GST
TM9801-10010	1M	3.2 Tonne	\$199.00	\$228.85
TM9801-10020	2M	3.2 Tonne	\$259.00	\$297.85
TM9801-10030	3M	3.2 Tonne	\$289.00	\$332.35
TM9801-10060	6M	3.2 Tonne	\$419.00	\$481.85

1 LEG 13MM CHAIN

PART NO.	CHAIN LENGTH	W.L.L. DIRECT LOAD	ex GST	inc GST
TM9801-13010	1M	5.3 Tonne	\$359.00	\$412.85
TM9801-13020	2M	5.3 Tonne	\$419.00	\$481.85
TM9801-13030	3M	5.3 Tonne	\$489.00	\$562.35
TM9801-13060	6M	5.3 Tonne	\$689.00	\$792.35

- Grade 80 lifting chain & fittings
- Includes shortening grab hook & clevis sling hook with safety latch
- Tested and certified to AS 3775.1
- Test tag supplied with every chain sling



ITM 2 Leg Chain Slings

2 LEG 6MM CHAIN

PART NO.	CHAIN LENGTH	W.L.L. at 120°	ex GST	inc GST
TM9802-06020	2M	1.1 Tonne	\$209.00	\$240.35

2 LEG 8MM CHAIN

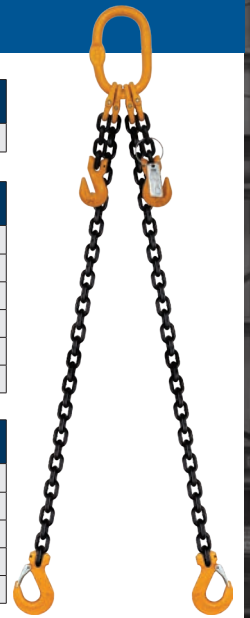
PART NO.	CHAIN LENGTH	W.L.L. at 120°	ex GST	inc GST
TM9802-08010	1m	2.0 Tonne	\$255.00	\$293.25
TM9802-08020	2m	2.0 Tonne	\$319.00	\$366.85
TM9802-08030	3m	2.0 Tonne	\$359.00	\$412.85
TM9802-08040	4m	2.0 Tonne	\$419.00	\$481.85
TM9801-08060	6m	2.0 Tonne	\$519.00	\$596.85
TM9801-08100	10m	2.0 Tonne	\$739.00	\$849.85

2 LEG 10MM CHAIN

PART NO.	CHAIN LENGTH	W.L.L. at 120°	ex GST	inc GST
TM9802-10010	1m	3.2 Tonne	\$399.00	\$458.85
TM9802-10020	2m	3.2 Tonne	\$489.00	\$562.35
TM9802-10030	3m	3.2 Tonne	\$569.00	\$654.35
TM9802-10040	4m	3.2 Tonne	\$649.00	\$746.35
TM9802-10060	6m	3.2 Tonne	\$799.00	\$918.85

2 LEG 13MM CHAIN

PART NO.	CHAIN LENGTH	W.L.L. at 120°	ex GST	inc GST
TM9802-13010	1m	5.3 Tonne	\$599.00	\$688.85
TM9802-13020	2m	5.3 Tonne	\$719.00	\$826.85
TM9802-13030	3m	5.3 Tonne	\$829.00	\$953.35
TM9802-13040	4m	5.3 Tonne	\$959.00	\$1102.85
TM9802-13060	6m	5.3 Tonne	\$1299.00	\$1493.85
TM9802-13080	8m	5.3 Tonne	\$1555.00	\$1788.25



Features for G80 Components

- Premium-grade heat treated alloy steel
- Specifications, batch and brand markings as per AS requirements
- Tested and certified to AS 3776

ITM G80 Clevis Single Master Link

Code No. TM9804-00207

- Chain Size - 7-8mm
- W.L.L.L. - 2T

\$33.50
\$38.53 inc GST



ITM G80 Clevis Self Locking Hook

PART NO.	CHAIN SIZE	W.L.L.	ex GST	inc GST
TM9804-02806	6mm	1.12T	\$62.50	\$71.88
TM9804-02807	7-8mm	2T	\$62.50	\$71.88
TM9804-02810	10mm	3.5T	\$97.50	\$112.23
TM9804-02813	13mm	5.3T	\$178.50	\$205.28
TM9804-02816	16mm	8T	\$349.00	\$401.35
TM9804-02820	20mm	12.5T	\$586.00	\$673.90
TM9804-02822	22mm	15T	\$795.50	\$914.83
TM9804-02826	26mm	21.2T	\$1368.00	\$1573.20



ITM G80 Clevis Choker Hook

PART NO.	CHAIN SIZE	W.L.L.	ex GST	inc GST
TM9804-03807	7-8mm	2T	\$44.50	\$51.58
TM9804-03810	10mm	3.15T	\$83.50	\$96.03
TM9804-03813	13mm	5.3T	\$160.50	\$184.58



ITM G80 Clevis Shortening Grab Hook

PART NO.	CHAIN SIZE	W.L.L.	ex GST	inc GST
TM9804-02406	6mm	1.12T	\$9.50	\$10.93
TM9804-02407	7-8mm	2T	\$11.00	\$12.65
TM9804-02410	10mm	3.15T	\$26.50	\$30.48
TM9804-02413	13mm	5.3T	\$53.00	\$60.95
TM9804-02416	16mm	8T	\$88.50	\$101.78
TM9804-02420	20mm	12.5T	\$165.00	\$189.75
TM9804-02422	22mm	15T	\$222.00	\$255.30



ITM G80 Clevis Sling Hook with Safety Latch

PART NO.	CHAIN SIZE	W.L.L.	ex GST	inc GST
TM9804-01206	6mm	1.12T	\$15.00	\$17.25
TM9804-01207	7-8mm	2T	\$23.50	\$27.03
TM9804-01210	10mm	3.15T	\$41.50	\$47.73
TM9804-01213	13mm	5.3T	\$76.50	\$87.98
TM9804-01216	16mm	8T	\$139.50	\$160.43
TM9804-01220	20mm	12.35T	\$265.00	\$304.75
TM9804-01222	22mm	15T	\$356.00	\$409.40



ITM G80 Clevis Shortening Grab Hook with Safety Pin

Code No. TM9804-02613

- Chain Size: 13mm
- W.L.L.: 5.3T

\$94.50
\$108.68 inc GST



ITM G80 Clevis Locking Shortening Clutch

Code No. TM9804-01013

- Chain Size: 13mm
- W.L.L.: 5.3T

\$215.00
\$247.25 inc GST



ITM G80 Celvis Shortening Clutch

PART NO.	CHAIN SIZE	W.L.L.	ex GST	inc GST
TM9804-00807	7-8mm	2T	\$61.00	\$70.15
TM9804-00810	10mm	3.15T	\$108.50	\$124.78
TM9804-00813	13mm	5.3T	\$212.00	\$243.80



ITM G80 Eye Sling Hook with Safety Latch

PART NO.	CHAIN SIZE	W.L.L.	ex GST	inc GST
TM9804-02206	6mm	1.12T	\$15.00	\$17.25
TM9804-02207	7-8mm	2T	\$16.50	\$18.98
TM9804-02210	10mm	3.15T	\$40.00	\$46.00
TM9804-02213	13mm	5.3T	\$69.50	\$79.93
TM9804-02216	16mm	8T	\$132.50	\$152.38
TM9804-02220	20mm	12.5T	\$209.00	\$240.35
TM9804-02222	22mm	15T	\$335.00	\$385.25
TM9804-02226	26mm	21.2T	\$502.50	\$577.88
TM9804-02232	32mm	31.5T	\$1061.00	\$1220.15



ITM G80 Eye Self Locking Hook

PART NO.	CHAIN SIZE	W.L.L.	ex GST	inc GST
TM9804-02006	6mm	1.12T	\$51.50	\$59.23
TM9804-02007	7-8mm	2T	\$65.50	\$75.33
TM9804-02010	10mm	3.15T	\$107.50	\$123.63
TM9804-02013	13mm	5.3T	\$153.50	\$176.53
TM9804-02016	16mm	8T	\$293.00	\$336.95
TM9804-02020	20mm	12.5T	\$530.50	\$610.08
TM9804-02022	22mm	15T	\$837.50	\$963.18
TM9804-02026	26mm	21.2T	\$1130.50	\$1300.08
TM9804-02032	32mm	31.5T	\$2904.00	\$3339.60



ITM G80 Eye Shortening Grab Hook

PART NO.	CHAIN SIZE	W.L.L.	ex GST	inc GST
TM9804-01406	6mm	1.12T	\$8.00	\$9.20
TM9804-01407	7-8mm	2T	\$18.00	\$20.70
TM9804-01410	10mm	3.15T	\$30.50	\$35.08
TM9804-01413	13mm	5.3T	\$51.50	\$59.23
TM9804-01416	16mm	8T	\$107.50	\$123.63
TM9804-01420	20mm	12.5T	\$153.50	\$176.53
TM9804-01422	22mm	15T	\$265.00	\$304.75
TM9804-01426	26mm	21.2T	\$971.50	\$1117.23
TM9804-01432	32mm	31.5T	\$1633.50	\$1878.53



ITM G80 Eye Foundry Hook

PART NO.	CHAIN SIZE	W.L.L.	ex GST	inc GST
TM9804-01807	7-8mm	2T	\$62.00	\$71.30
TM9804-01810	10mm	3.15T	\$104.50	\$120.18
TM9804-01813	13mm	5.3T	\$194.00	\$223.10
TM9804-01816	16mm	8T	\$244.00	\$280.60
TM9804-01820	20mm	12.5T	\$335.00	\$385.25
TM9804-01822	22mm	15T	\$502.50	\$577.88



ITM G80 Eye Swivel Hook with Safety Latch

PART NO.	CHAIN SIZE	W.L.L.	ex GST	inc GST
TM9804-01607	7-8mm	2T	\$67.00	\$77.05
TM9804-01610	10mm	3.15T	\$92.00	\$105.80
TM9804-01613	13mm	5.3T	\$173.00	\$198.95
TM9804-01616	16mm	8T	\$328.00	\$377.20



ITM G80 Eye Swivel Self Locking Hook

PART NO.	CHAIN SIZE	W.L.L.	ex GST	inc GST
TM9804-03007	7-8mm	2T	\$118.50	\$136.28
TM9804-03010	10mm	3.15T	\$181.50	\$208.73
TM9804-03013	13mm	5.3T	\$258.00	\$296.70
TM9804-03016	16mm	8T	\$488.50	\$561.78
TM9804-03020	20mm	12.5T	\$935.50	\$1075.25



ITM G80 Eye Swivel Self Locking Hook with Ball Bearing

PART NO.	CHAIN SIZE	W.L.L.	ex GST	inc GST
TM9804-03206	6mm	1.12T	\$77.00	\$88.55
TM9804-03207	7-8mm	2T	\$95.00	\$109.25
TM9804-03210	10mm	3.5T	\$196.50	\$225.98
TM9804-03213	13mm	5.3T	\$368.00	\$423.20
TM9804-03216	16mm	8T	\$723.00	\$831.45
TM9804-03220	20mm	12.5T	\$1332.50	\$1532.38



ITM G80 Eye Container Hook

PART NO.	CHAIN SIZE	W.L.L.
TM9804-03601	Left 45°	12.5T
TM9804-03602	Right 45°	12.5T
TM9804-03603	Straight	12.5T



ITM G80 Recessed Enlarged Multi-Leg Mster Links

PART No.	Chain Size		W.L.L.	ex GST	inc GST
	1 Leg Sling	2 Leg Sling			
TM9804-00407	8mm	7mm	2.7T	\$15.00	\$17.25
TM9804-00408	10mm	8mm	3.5T	\$22.00	\$25.30
TM9804-00410	13mm	10mm	5.5T	\$30.50	\$35.08
TM9804-00413	16mm	13mm	9.4T	\$69.50	\$79.93
TM9804-00416	20mm	16mm	14.2T	\$125.50	\$144.33
TM9804-00420	22mm	20mm	22.3T	\$189.00	\$216.20
TM9804-00422	26mm	22mm	33.5T	\$488.50	\$561.78
TM9804-00426	32mm	26mm	40.8T	\$607.00	\$698.05
TM9804-00432	36mm	32mm	56.9T	\$1256.50	\$1444.98



ITM G80 Master Link Multi Leg Oblong Recessed Enlarged

PART NO.	CHAIN SIZE	W.L.L.	ex GST	inc GST
TM9804-00607	7mm	3.15T	\$34.50	\$39.68
TM9804-00608	8mm	4.25T	\$62.00	\$71.30
TM9804-00610	10mm	6.7T	\$88.50	\$101.78
TM9804-00613	13mm	11.2T	\$160.50	\$184.58
TM9804-00616	16mm	17T	\$263.50	\$303.03
TM9804-00620	20mm	26.5T	\$860.00	\$989.00
TM9804-00622	22mm	31.5T	\$1040.00	\$1196.00
TM9804-00626	26mm	45T	\$2331.50	\$2681.23



ITM Safety Chain Hook Set

Conforms to ADR62/02
Breaking Force - 4 to 1 safety factor as per AS3775.2

PART NO.	Suit to Trailer Chain	Tow Capacity	Breaking Force (per Hook)	ex GST	inc GST
TM9804-2000	8mm	2T	4T	\$35.40	\$40.71
TM9804-4000	10 & 13mm	4T	8T	\$48.50	\$55.78



ITM G80 Weld On Safety Excavator Hook

PART NO.	W.L.L.	ex GST	inc GST
TM9804-03401	1T	\$48.50	\$55.78
TM9804-03403	3T	\$56.00	\$64.40
TM9804-03405	5T	\$109.00	\$125.35
TM9804-03408	8T	\$139.00	\$159.85
TM9804-03410	10T	\$299.00	\$263.35



Features for Dee & Bow Safety Pins

- Maximum proof load of 2 times W.L.L.
- Drop forged, quenched & tempered
- Tested and certified to AS 2741
- Minimum breaking force of 6 times W.L.L.
- Galvanised finish

ITM Dee Shackle Yellow Pin GS Screw Pin

PART NO.	NOMINAL SIZE	W.L.L.	ex GST	inc GST
TM9200-00506	6mm (1/4")	0.5T	\$3.50	\$4.53
TM9200-00708	8mm (5/16")	0.75T	\$4.00	\$4.60
TM9200-01010	10mm (3/8")	1T	\$4.50	\$5.18
TM9200-01511	11mm (7/16")	1.5T	\$7.00	\$8.05
TM9200-02013	13mm (1/2")	2T	\$9.00	\$10.35
TM9200-03216	16mm (5/8")	3.25T	\$15.50	\$17.83
TM9200-04719	19mm (3/4")	4.75T	\$22.00	\$25.30
TM9200-06522	22mm (7/8")	6.5T	\$32.50	\$37.38
TM9200-08525	25mm (1")	8.5T	\$45.50	\$52.33
TM9200-09529	29mm (1-1/8")	9.5T	\$68.00	\$78.20
TM9200-12032	32mm (1-1/4")	12T	\$92.50	\$106.38
TM9200-13035	35mm (1-3/8")	13.5T	\$123.50	\$142.93
TM9200-17038	38mm (1-1/2")	17T	\$163.50	\$188.93
TM9200-25044	44mm (1-3/4")	25T	\$293.00	\$336.95
TM9200-35050	50mm (2")	35T	\$420.00	\$483.90



ITM Dee Shackle Yellow Pin GS Safety Pin

PART NO.	NOMINAL SIZE	W.L.L.	ex GST	inc GST
TM9202-02013	13mm (1/2")	2.0T	\$9.50	\$10.93
TM9202-03216	16mm (5/8")	3.25T	\$15.50	\$17.83
TM9202-04719	19mm (3/4")	4.75T	\$25.00	\$28.75
TM9202-06522	22mm (7/8")	6.5T	\$38.50	\$44.28
TM9202-08525	25mm (1")	8.5T	\$50.50	\$58.08
TM9202-09529	29mm (1-1/8")	9.5T	\$75.50	\$86.83
TM9202-12032	32mm (1-1/4")	12.0T	\$103.50	\$119.03



ITM Bow Shackle Yellow Pin GS Screw Pin

PART NO.	NOMINAL SIZE	W.L.L.	ex GST	inc GST
TM9220-00506	6mm (1/4")	0.5T	\$3.50	\$4.53
TM9220-00708	8mm (5/16")	0.75T	\$4.00	\$4.60
TM9220-01010	10mm (3/8")	1T	\$5.50	\$6.33
TM9220-01511	11mm (7/16")	1.5T	\$7.50	\$8.53
TM9220-02013	13mm (1/2")	2T	\$9.00	\$10.35
TM9220-03216	16mm (5/8")	3.25T	\$14.50	\$16.68
TM9220-04719	19mm (3/4")	4.75T	\$24.00	\$27.60
TM9220-06522	22mm (7/8")	6.5T	\$36.00	\$41.40
TM9220-08525	25mm (1")	8.5T	\$50.50	\$58.08
TM9220-09529	29mm (1-1/8")	9.5T	\$72.50	\$83.38
TM9220-12032	32mm (1-1/4")	12T	\$101.50	\$116.73
TM9220-13035	35mm (1-3/8")	13.5T	\$139.00	\$159.85
TM9220-17038	38mm (1-1/2")	17T	\$175.50	\$201.83
TM9220-25044	44mm (1-3/4")	25T	\$338.00	\$388.70
TM9220-35050	50mm (2")	35T	\$508.50	\$584.78



ITM Bow Shackle Yellow Pin GS Screw Pin

PART NO.	NOMINAL SIZE	W.L.L.	ex GST	inc GST
TM9222-02013	13mm (1/2")	2T	\$10.50	\$12.08
TM9222-03216	16mm (5/8")	3.25T	\$17.50	\$20.13
TM9222-04719	19mm (3/4")	4.75T	\$25.00	\$28.75
TM9222-06522	22mm (7/8")	6.5T	\$39.50	\$45.43
TM9222-08525	25mm (1")	8.5T	\$54.50	\$62.68
TM9222-09529	29mm (1-1/8")	9.5T	\$83.50	\$96.03
TM9222-12032	32mm (1-1/4")	12T	\$111.00	\$127.65
TM9222-13035	35mm (1-3/8")	13.5T	\$156.00	\$179.40
TM9222-17038	38mm (1-1/2")	17T	\$192.50	\$221.38
TM9222-25044	44mm (1-3/4")	25T	\$351.00	\$403.65
TM9222-35050	50mm (2")	35T	\$545.00	\$626.75



ITM G70 Load Binders Ratchet Type

- Grab hooks at both ends
- Powder coated
- Drop forged & heat treated high strength steel
- Proof tested & fitted with metal test tag
- Tested & certified to AS/NZS 4344



PART NO.	LASHING CAPACITY	HOOK / CHAIN SIZE	PRICE	
			ex GST	inc GST
TM9701-02006	2000kg	6mm (1/4")	\$60.00	\$69.00
TM9701-04208	4200kg	8mm (5/16"-3/8")	\$81.00	\$93.55
TM9701-07310	7300kg	10mm (3/8"-1/2")	\$85.00	\$97.75
TM9701-10013	10000kg	13mm (1/2"-5/8")	\$108.00	\$124.20

ITM G70 Load Binders Lever Type

- Grab hooks with swivel fittings at both ends
- Powder coated
- Drop forged & heat treated high strength steel
- Proof tested & fitted with metal test tag
- Tested & certified to AS/NZS 4344



PART NO.	LASHING CAPACITY	HOOK / CHAIN SIZE	PRICE	
			ex GST	inc GST
TM9700-02006	2000kg	6mm (1/4")	\$48.00	\$55.20
TM9700-04208	4200kg	8mm (5/16"-3/8")	\$64.50	\$74.58
TM9700-07310	7300kg	10mm (3/8"-1/2")	\$97.50	\$112.13
TM9700-10013	10000kg	13mm (1/2"-5/8")	\$242.50	\$278.88

Features for G70 Clevis

- Zinc Di-chromate coated
- Supplied in convenient pre-cut lengths
- Fitted with metal test tag
- Tested & certified to AS/NZS 4344

ITM G70 Clevis Claw Hooks

PART NO.	Lashing Capacity	Chain Size	ex GST	inc GST
TM9720-03808	3800kg	7-8mm	\$20.50	\$23.58
TM9720-06010	6000kg	10mm	\$47.50	\$54.83



ITM G70 Clevis Lug Link

PART NO.	Lashing Capacity	Chain Size	ex GST	inc GST
TM9721-03808	3800kg	7-8mm	\$16.00	\$18.40
TM9721-06010	6000kg	10mm	\$20.00	\$23.00
TM9721-09013	9000kg	13mm	\$24.50	\$28.58



ITM G70 Clevis Grab Hooks

PART NO.	Lashing Capacity	Chain Size	ex GST	inc GST
TM9722-02306	2300kg	6mm	\$6.50	\$7.48
TM9722-03808	3800kg	7-8mm	\$9.50	\$10.93
TM9722-06010	6000kg	10mm	\$15.50	\$17.83
TM9722-09013	9000kg	13mm	\$27.00	\$31.05



ITM G70 Clevis Slip Hooks

PART NO.	Lashing Capacity	Chain Size	ex GST	inc GST
TM9723-02306	2300kg	6mm	\$8.00	\$9.20
TM9723-03808	3800kg	7-8mm	\$10.50	\$12.08
TM9723-06010	6000kg	10mm	\$18.50	\$21.28
TM9723-09013	9000kg	13mm	\$35.00	\$40.25



ITM G80 Lifting Chain Black Tempered

- Premium-grade heat treated alloy steel
- Marked with chain grade and traceability mark
- Safety factor 4:1
- Tested and certified to AS 2321
- Sold per metre



PART NO.	Nominal Size	W.L.L.	ex GST	inc GST
TM9806-01106	6mm	1.1T	\$11.50	\$13.23
TM9806-01507	7mm	1.5T	\$14.50	\$16.68
TM9806-02008	8mm	2T	\$18.00	\$20.70
TM9806-03210	10mm	3.2T	\$28.00	\$32.20
TM9806-05313	13mm	5T	\$48.00	\$55.20
TM9806-08016	16mm	8T	\$74.50	\$85.68
TM9806-12520	20mm	12.5T	\$128.00	\$147.20

ITM 50kg Drum Regular Link Chain

- Electric galvanised zinc finish
- Not for lifting purposes



PART NO.	Nominal Size	Meters per 50kg	ex GST	inc GST
TM9306-05003	3mm	282M	\$551.00	\$633.55
TM9306-05004	4mm	175M	\$512.50	\$589.38
TM9306-05005	5mm	90M	\$489.00	\$562.35
TM9306-05006	6mm	62M	\$485.00	\$557.75
TM9306-05008	8mm	40M	\$481.50	\$553.73
TM9306-05010	10mm	27M	\$481.50	\$553.73
TM9306-05013	13mm	15.7M	\$481.50	\$553.73

ITM G70 Transport Chain Kit Claw Hooks at each end

- Zinc Di-chromate coated
- Supplied in convenient pre-cut lengths
- Fitted with metal test tag
- Tested & certified to AS/NZS 4344



PART NO.	Lashing Capacity	Chain Size	Length	ex GST	inc GST
TM9713-03806	3800kg	8mm	6m	\$129.00	\$148.35
TM9713-03809	3800kg	8mm	9m	\$179.00	\$205.85
TM9713-06006	6000kg	10mm	6m	\$219.00	\$251.85
TM9713-06009	6000kg	10mm	9m	\$289.00	\$332.35

ITM G70 Transport Chain Kit Lug Link & Grab Hook

- Zinc Di-chromate coated
- Supplied in convenient pre-cut lengths
- Fitted with metal test tag
- Tested & certified to AS/NZS 4344



PART NO.	Lashing Capacity	Chain Size	Length	ex GST	inc GST
TM9715-03805	3800kg	8mm	5m	\$99.00	\$113.85
TM9715-06005	6000kg	10mm	5m	\$145.00	\$166.75
TM9715-09005	9000kg	13mm	5m	\$239.00	\$275.43

ITM 25kg Drum Regular Link Chain

- Electric galvanised zinc finish
- Not for lifting purposes



PART NO.	Nominal Size	Meters per 25kg	ex GST	inc GST
TM9306-02503	3mm	141M	\$287.00	\$330.05
TM9306-02504	4mm	87M	\$271.50	\$312.23
TM9306-02505	5mm	45M	\$256.00	\$294.40
TM9306-02506	6mm	31M	\$250.00	\$287.50
TM9306-02508	8mm	20M	\$248.50	\$285.78

ITM G70 Transport Chain 50kg Drum

- Zinc Di-chromate coated
- Supplied in convenient pre-cut lengths
- Fitted with metal test tag
- Tested & certified to AS/NZS 4344



PART NO.	Lashing Capacity	Chain Size	Length	ex GST	inc GST
TM9710-02306	2300kg	6mm	62m	\$665.00	\$764.75
TM9710-03808	3800kg	8mm	35m	\$569.00	\$654.35
TM9710-06010	6000kg	10mm	23m	\$575.00	\$661.25
TM9710-09013	9000kg	13mm	13m	\$539.00	\$619.85

ITM G70 Transport Chain Kit Grab Hooks at each end

- Zinc Di-chromate coated
- Supplied in convenient pre-cut lengths
- Fitted with metal test tag
- Tested & certified to AS/NZS 4344



PART NO.	Lashing Capacity	Chain Size	Length	ex GST	inc GST
TM9714-02306	2300kg	6mm	6m	\$74.00	\$85.10
TM9714-02309	2300kg	6mm	9m	\$102.00	\$117.30
TM9714-03006	3000kg	7.1mm	6m	\$96.00	\$110.40
TM9714-03009	3000kg	7.1mm	9m	\$132.00	\$151.80
TM9714-03806	3800kg	8mm	6m	\$112.00	\$128.80
TM9714-03809	3800kg	8mm	9m	\$157.00	\$180.55
TM9714-06006	6000kg	10mm	6m	\$173.50	\$199.53
TM9714-06009	6000kg	10mm	9m	\$239.00	\$274.85

ITM G70 Transport Chain Kit Lug Link & Slip Hook

- Zinc Di-chromate coated
- Supplied in convenient pre-cut lengths
- Fitted with metal test tag
- Tested & certified to AS/NZS 4344



PART NO.	Lashing Capacity	Chain Size	Length	ex GST	inc GST
TM9716-03805	3800kg	8mm	5m	\$98.00	\$112.70
TM9716-06005	6000kg	10mm	5m	\$142.00	\$163.30
TM9716-09005	9000kg	13mm	5m	\$239.00	\$274.85

ITM G70 Transport Chain Kit Lug Link, Slip Hook & Grab Hook

- Zinc Di-chromate coated
- Supplied in convenient pre-cut lengths
- Fitted with metal test tag
- Tested & certified to AS/NZS 4344



PART NO.	Lashing Capacity	Chain Size	Length	ex GST	inc GST
TM9717-03805	3800kg	8mm	5m	\$107.00	\$123.05
TM9717-06005	6000kg	10mm	5m	\$150.00	\$172.50
TM9717-09005	9000kg	13mm	5m	\$256.00	\$294.40

PE Diesel Tank with 12V Pump



Heavy duty construction with lockable filling cap and pump cover for reliable and secure delivery of diesel.

- UV stabilised diesel grade polyethylene polytuff tank
- Power Output: 140W
- 12V Diesel Power Self priming pump
- 40L/Min open flow
- 30 min duty cycle, 30 min on/off
- High quality auto shut off trigger
- 4m wiring harness with alligator clips
- 4m of 3/4" delivery hose with swivel and crimped fittings
- Auto shut off gun with swivel
- Suction foot screen filter on internal suction line
- Diesel level indicator
- Hose and gun stores under the lockable cover
- Padlock included

PE3170 - 200L (L 810 x W 680 x H 630mm)

\$1199⁰⁰ (ex GST)

\$1378⁸⁵ (inc GST)

PE3172 - 400L (L 1050 x W 710 x H 760mm)

\$1599⁰⁰ (ex GST)

\$1838⁸⁵ (inc GST)

PE 750mm Industrial/Commercial Wall Fan

Code No. PE1026

Designed for industrial use, solid construction with long life commercial motor. These industrial fans are excellent for work sites, workshops, warehouses, garages or sheds.

- 240V / 50Hz 280W
- 3 Speed Motor - 1400rpm (max)
- 750mm Alloy 3-Blade Fan
- Air Flow Delivery upto 290m³/min
- dB(A) - 86
- Heavy Duty Wall Fixing Plate
- 0° to 90° Oscillating Angle
- Metal Oscillating Gears
- NW / GW - 11kg / 12kg

Note: This fan is designed for industrial/commercial use, not recommended for home use.



\$386.00

\$443⁹⁰ inc GST

PE 57L Portable Fuel Tank

Code No. PE3174

Features

- 57 litre fuel tank on wheels, ideal for farm and rural use as well as marine and recreational use
- Sturdy wheels making it easy to transport and you can take it to go anywhere
- Features 2 brass shut off valves one at the tank and one at the hose. This allows for easy disconnect with no fuel spillage
- Patented pump handle that looks just like the ones you use at the gas station. It features a child lock for added safety and it has a flow rate of 7.5 litre per minute in the siphon mode

Specification

- 57L Fuel
- Material: HDPE
- Flow Rate: 2ga/min
- Weight: 8.7kg
- Compatible with: Gasoline / Diesel / Kerosene

NEW

\$279.00

\$320⁸⁵ inc GST



PE 750mm Industrial/Commercial Pedestal Fan

Code No. PE1015

Designed for industrial use, solid construction with long life commercial motor. These industrial fans are excellent for work sites, workshops, warehouses, garages or sheds.

- 240V / 50Hz 280W
- 750mm Alloy 3 Blade Fan
- dB(A) - 86
- 0° to 90° Oscillating Angle
- Adjustable Height - 1235 to 1760mm (Blade Centre)
- NW (GW) - 19kg (20kg)
- 3 Speed Motor - 1400rpm (max)
- Air Flow Delivery upto 290m³/min
- Cast Iron Base for Stability
- Metal Oscillating Gears

Note: This fan is designed for industrial/commercial use, not recommended for home use.

\$395.00

\$454²⁵ inc GST



PE Industrial Ventilation Fans

This high performance portable ventilator fan has been specifically designed for use in commercial, industrial & agricultural environments. It ensures a constant flow of fresh, clean air by rapidly extracting stale or dust filled air.



• Complete with 5M of Flexible Ducting (-30° to +80°C)

Part No.	Power	Alloy Multi Blade Fan	Air Delivery	Static Pressure	dB(A)	ex GST	inc GST
PE1025	240V (50Hz 320W)	300mm (2850rpm)	65m ³ /min	373Pa	71	\$564. ⁵⁰	\$649. ¹⁸
PE1056	240V (50Hz 1000W)	400mm (2800rpm)	96m ³ /min	700Pa	80	\$1028. ⁵⁰	\$1182. ⁷⁸
PE1140	240V (50Hz 145W)	200mm (2850rpm)	25m ³ /min	245Pa	63	\$479. ⁰⁰	\$550. ⁸⁵
PE1141	240V (50Hz 1450W)	450mm (2800rpm)	162m ³ /min	972Pa	83	\$1132. ⁰⁰	\$1301. ⁸⁰

PE Mobile Truck Trolley

Code No. PE6002

Features

- Strong tubular steel construction
- Handy tool storage holders
- Protective Bumper for top tray
- Smooth rolling castors
- Height adjustable to most commercial vehicles
- Sturdy main support post

Specifications

- Safe Working Capacity: 30kg
- Adjustable Working Height: 960-1500mm
- Castor Wheel Diameter: 75mm
- Table Top Dimensions: L 797 x W 695mm
- Main Tray Dimensions: L 556 x W 695mm
- Distance between front castors: 955mm
- Depth at full width: 485mm
- Net (Gross) Weight: 22kg (25kg)



NEW

\$287.00

\$330⁰⁵ inc GST

PE 320 Pc SAE & Metric Thread Repair Kit

Code No. PE8510

Feature

- Precision Restoration
- SAE & Metric Inclusion
- Durable Materials
- Easy Repair
- Thread inserts are made of stainless steel No. 304
- Twist drills and taps are made of HSS No. 4241

Content

- 5pc SAE Breaking Pin Tool
- 5pc SAE Screw Tap
- 5pc SAE Drill Bit
- 5pc SAE Installation Tool
- 128pc SAE Wire Thread Inserts
- 5pc Metric Breaking Pin Tool
- 5pc Metric Screw Tap
- 5pc Metric Drill Bit
- 5pc Metric Installation Tool
- 140pc Metric Wire Thread Inserts
- 2pc Mini Hex Wrench
- 10pc Thread Insert Box

NEW

\$162.50

\$186⁸⁸ inc GST



ITM 50mm 7hp Water Transfer Pump Petrol

Code No. TM530-050

FEATURES

- Powerful 7hp 4 stroke engine
- Heavy Duty roll cage frame
- Heavy Duty aluminium pump body
- 2 year trade warranty

SPECIFICATIONS

- Engine HP: 7hp
- Inlet / Outlet Size: 50mm (2")
- Maximum Suction Lift: 7.5m
- Maximum Head: 32m
- Maximum Flow: 28,000 L/Hr (466 L/min)
- Net Weight: 25kg

\$478.00

\$549.70^{inc GST}

NEW



ITM 80mm 7hp Water Trash Pump Petrol

Code No. TM530-080

FEATURES

- Powerful 7hp 4 stroke engine
- Heavy Duty powder coated roll cage frame
- Heavy Duty aluminium pump body
- 2 year trade warranty

SPECIFICATIONS

- Engine HP: 7hp
- Inlet / Outlet Size: 80mm
- Maximum Suction Lift: 7m
- Maximum Head: 25m
- Maximum Particle Size: 25mm
- Maximum Flow: 60,000 L/Hr (1000 L/min)
- Net Weight: 37kg

\$742.00

\$853.30^{inc GST}

NEW



ITM Honda GX160 5.5hp Water Transfer Pump Petrol

Code No. TM532-050

FEATURES

- Powered by Honda GX160 5.5hp 4 stroke engine.
- Heavy Duty roll cage frame.
- Heavy Duty pump body.
- 3 Year Honda engine limited warranty.
- 2 Year trade warranty on pump.

SPECIFICATIONS

- Engine HP: 5.5hp
- Inlet / Outlet Size: 50mm (2")
- Maximum Suction Lift: 7m
- Maximum Head: 32m
- Maximum Flow: 35,000 L/Hr (583 L/min)
- Net Weight: 25kg

\$1179.00

\$1355.85^{inc GST}

NEW



POWERED by
HONDA

ITM Honda GX160 5.5hp Water Transfer Pump Petrol

Code No. TM532-080

FEATURES

- Powered by Honda GX160 5.5hp 4 stroke engine.
- Heavy duty roll cage frame.
- Heavy duty pump body.
- Ideal for high volume applications.
- 3 Year Honda engine limited warranty.
- 2 Year trade warranty on pump.

SPECIFICATIONS

- Engine HP: 5.5hp
- Inlet / Outlet Size: 80mm
- Maximum Suction Lift: 7m
- Maximum Head: 30m
- Maximum Flow: 60,000 L/Hr (1000 L/min)
- Net Weight: 27kg

\$1222.00

\$1405.30^{inc GST}

NEW



POWERED by
HONDA

ITM 7HP Water Pressure Pump Petrol Twin Impeller

Code No. TM530-250

FEATURES

- Powerful 7hp 4 stroke engine
- Heavy Duty roll cage frame
- Heavy Duty aluminium pump body
- Twin impeller delivers water higher and further
- 2-year trade warranty

SPECIFICATIONS

- Engine HP: 7hp
- Inlet Size: 1x 50mm (2")
- Outlet Size: 1x 50mm (2"), 2x 38mm (1.5")
- Maximum Suction Lift: 7m
- Maximum Head: 80m
- Maximum Flow: 17,000 L/Hr (283 L/min)
- Net Weight: 27kg

\$599.00

\$688.85^{inc GST}

NEW



ITM Water Transfer Hose Lay Flat

Code No. TM533-020

FEATURES

- UV resistant and anti-stretch PVC material.
- Includes quick fit camlock fittings, threaded adaptor and hose clamps
- 50mm (2") diameter.
- 58psi Maximum pressure rating.

SPECIFICATIONS

- Length: 20m
- Diameter: 50mm (2")

NEW

\$259.00

\$297.85^{inc GST}



ITM Water Transfer Suction Hose

Code No. TM533-007

FEATURES

- Reinforced clear PVC.
- Includes quick fit camlock fittings, threaded adaptor and hose clamps
- Metal inlet strainer basket included
- 50mm (2") diameter

SPECIFICATIONS

- Length: 7m
- Diameter: 50mm (2")

\$239.00

\$274.85^{inc GST}



ITM 3200psi Petrol Pressure Washer

Code No. TM540-3200

- High quality 212cc industrial engine
- Engine Horse Power: 7hp
- Max Pressure: 3200psi (220 Bar)
- Max Flow Rate: 9.5 L/min
- Displacement: 212cc
- Fuel Tank: 3.3Ltr
- Start Type: Recoil
- Pump type: 3 Piston Axial Cam Pump
- Quick connect nozzles: 0°, 15°, 25°, 40°, Soap
- Hose Length: 7.6m

\$735.00
\$845.25^{inc GST}



ITM 3800psi Petrol Pressure Washer

Code No. TM540-3800

- High quality 274cc industrial engine
- Engine Horse Power: 8hp
- Max Pressure: 3800psi (262 Bar)
- Max Flow Rate: 13.2 L/min
- Displacement: 274cc
- Fuel Tank: 5Ltr
- Start Type: Recoil
- Pump type: 3 Piston Triplex pump with brass head
- Quick connect nozzles: 0°, 15°, 25°, 40°, Soap and turbo nozzle
- Hose Length: 15m

\$1563.00
\$1797.45^{inc GST}



ITM 2500psi Petrol Pressure Washer

Code No. TM542-2500

- 5.5hp Genuine Honda GP160 engine, assembled to machine in Australia
- Max Pressure: 2500psi (172 Bar)
- Max Flow Rate: 8.7 L/min
- Displacement: 163cc
- Fuel Tank: 3.1Ltr
- Start Type: Recoil
- Pump type: AR Axial Pump
- Quick connect nozzles: 15°, 25°, 40°, Soap
- Hose Length: 7.6m

\$1349.00
\$1551.35^{inc GST}

POWERED by HONDA



ITM 3200psi Petrol Pressure Washer

Code No. TM542-3200

- 6.5hp Genuine Honda GX200 engine, assembled to machine in Australia
- High quality 196cc industrial engine
- Max Pressure: 3200psi (220 Bar)
- Max Flow Rate: 9.5 L/min
- Displacement: 196cc
- Fuel Tank: 3.6Ltr
- Start Type: Recoil
- Pump type: AR Axial Pump
- Quick connect nozzles: 0°, 15°, 25°, 40°, Soap
- Hose Length: 10m

\$1799.00
\$2068.85^{inc GST}

POWERED by HONDA



ITM 4200psi Petrol Pressure Washer

Code No. TM542-4200

- 13hp Genuine Honda GX390 engine, assembled to machine in Australia
- Max Pressure: 4200psi (290 Bar)
- Max Flow Rate: 15.1 L/min
- Displacement: 389cc
- Fuel Tank: 6.1Ltr
- Start Type: Recoil
- Pump type: AR Triplex Pump
- Quick connect nozzles: 0°, 15°, 25°, 40°, Soap
- Hose Length: 15m

\$3999.00
\$4598.85^{inc GST}

POWERED by HONDA



ITM 4200psi Petrol Pressure Washer Kit

Code No. TM542-4200K1

- Engine Horse Power: 13hp
- Max Pressure: 4200psi (290 Bar)
- Max Flow Rate: 15.1 L/min
- Displacement: 389cc
- Fuel Tank: 6.1Ltr
- Start Type: Recoil
- Pump type: AR Triplex Pump
- Quick connect nozzles: 0°, 15°, 25°, 40°, Soap
- 535mm (21") Surface Cleaner

\$4799.00
\$5518.85^{inc GST}

POWERED by HONDA



ITM 380mm (15") Surface Cleaner

Code No. TM541-015

- For use with 3/8" Quick-Connect petrol pressure washer lances
- Strong PP housing
- Tough bristle brush edge prevents water from splashing
- Head Diameter: 380mm (15")
- Max Pressure: 3200psi (220bar)

\$189.00
\$217.35^{inc GST}



ITM 535mm (21") Surface Cleaner

Code No. TM541-021

- High quality ABS casing
- Dual stainless steel water jets
- Max pressure 4200PSI
- 4 solid swivel castor wheels
- Bristle edge protection prevents water and debris from flicking up
- Ergonomic handle design
- For use with 3/8" Quick-Connect petrol pressure washer
- Head Diameter: 535mm (21")

\$1099.00
\$1263.85^{inc GST}



SCHMICK MICK 20L Heavy Duty Degreaser

Code No. SM1003-20

\$143.00
\$164.45^{inc GST}



THE ALL-ROUNDER
Schmick Mick degreaser, the best remedy for difficult cleaning problems. Designed to remove grease accumulation and leave your surfaces clean and grime-free.

Schmick Mick degreaser is quick-acting formulation enables it to penetrate the grease and filth in under a minute. This mixture works quickly to deliver effective cleaning results while saving you time and effort. Our degreaser is also designed not to fade metal components.

SCHMICK MICK 20L Extreme Truck Wash

Code No. SM4001E-20

\$119.00
\$136.85^{inc GST}



For that serious wash to remove heavy duty mud, grease and stains from your 4WD, Truck, Motorbike, Caravan or Heavy Machinery

SCHMICK MICK 20L Heavy Duty Degreaser

Code No. SM4003B-20

\$139.00
\$159.85^{inc GST}



A quick-break biodegradable degreaser. Suitable for use across a broad range of applications and has the advantage of being environmentally friendly environmentally friendly

SCHMICK MICK 4 Pc Ultimate Care Pack

Code No. SM5003

TWO FREE Microfibre Towels

Keep cleaning easy with the Schmick Mick Ultimate Care Pack. Four of our best selling products to make your car, truck, motorbike, or trailer looking schmick.

Content

- SM1002K - 1L Ceramic, Hydro Foam Wash (Bonus Key Ring)
- SM1007 - 750ml Tyre Shine
- SM1008 - 500ml Ceramic Protection
- SM1005 - 500ml Like New Vinyl & Plastic Restorer

\$129.⁵⁰
\$148.⁹³ inc GST

SCHMICK MICK 500ml Like New Vinyl & Plastic Restorer

Code No. SM1005

Schmick Mick Like New Vinyl & Plastic Restorer is a truly exceptional product that offers a wide range of benefits for revitalizing and restoring vinyl and plastic surfaces.

Directions: Spray directly on surface or directly into a micro fibre cloth and wipe evenly over surface.

\$20.⁰⁰
\$23.⁰⁰ inc GST

SCHMICK MICK 1L Blizzard Foam Wash

Code No. SM1001

Schmick Mick Blizzard Foam is not your ordinary cleaning solution. It is a game-changer, specifically designed to tackle the toughest cleaning challenges with ease.

Directions: Pour 3 to 4 caps full into the Foaming Gun or Cannon and add water. Shake well and apply with hose or pressure washer. Allow solution to sit for 40 second, agitate with sponge or cloth and rinse. Can also be used diluted into a bucket of water and applied with a sponge.

\$34.⁰⁰
\$39.¹⁰ inc GST

SCHMICK MICK 750ml Lanolin Rust Preventor

Code No. SM1006

Schmick Mick Lanolin Spray creates a protective barrier on various surfaces, shielding them from moisture, rust, corrosion, and other environmental elements. This protective layer helps to extend the lifespan of your equipment, tools, and machinery. Excellent Lubrication, Water and Moisture Repellent, Long lasting Performance & Environmentally Friendly.

Directions: Spay all over surface liberally and leave to create a protective barrier against moisture and rust.

\$35.⁰⁰
\$40.²⁵ inc GST

SCHMICK MICK 1L Ceramic, Hydro Foam Wash

Code No. SM1002K

Schmick Mick Ceramic/Hydro Foam helps shield your surfaces from future stains and grime accumulation in addition to providing superb cleaning results. Because of the protective layer that is created by its ceramic technology, dirt is repelled, making it easier to clean with each wash.

Directions: Add 3 to 4 caps full to a Schmick Mick Foaming Cannon or Gun and fill with water. Shake well and press trigger and apply all over surface. Let sit for 40 seconds and sponge in to agitate dirt and grime then hose off.

Bonus Key Ring

\$27.⁰⁰
\$31.⁰⁵ inc GST

SCHMICK MICK 750ml Tyre Shine

Code No. SM1007

Ultimate Showroom Finish, Effortless Application for Professional Results and Long Lasting Protection Against Dirt and Grime Schmick Mick Tyre Shine is not just about aesthetics; it's also about performance! Our advanced formulation is designed to repel dirt, dust, and grime, keeping your vehicle looking pristine for longer periods. Enjoy the peace of mind knowing that your investment is protected against the elements, and you won't have to worry about frequent cleaning sessions. Experience a cleaner and more polished ride that radiates elegance and sophistication on every journey.

\$30.⁵⁰
\$35.⁰⁸ inc GST

SCHMICK MICK 500ml Ceramic Spray

Code No. SM1008

Schmick Mick Ceramic Protection is a breeze to apply. Its easy-to-use application process that allows you to achieve professional results without the need for specialized tools or equipment.

Directions: Spray on surface and gently wipe over evenly with a micro fibre cloth. For best results apply after washing your vehicle, bike or boat.

\$34.⁵⁰
\$39.⁶⁸ inc GST

SCHMICK MICK 1L Grime Degreaser

Code No. SM1003

Schmick Mick degreaser, the best remedy for difficult cleaning problems. designed to remove grease accumulation and leave your surfaces clean and grime-free. Our degreaser is also designed not to fade metal components.

Directions: Spray on surface and leave for 1 minute to allow the degreaser to penetrate. Use hose or pressure washer to rinse the area clean. For tougher areas you may need to use a sponge or scrubbing brush.

\$27.⁰⁰
\$31.⁰⁵ inc GST

SCHMICK MICK 750ml Glass Cleaner

Code No. SM1009

Schmick Mick Clear Vision Glass Cleaner uses an advanced formula which guarantees streak free results, ensuring that your windows, mirrors, and glass surfaces sparkle like never before. Powerful solution is perfect for a wide range of applications, including automotive windows, household mirrors, glass furniture, and more. It's a must-have for every vehicle owner of in the home.

Directions: Spray on surface liberally and wipe clean with a clean paper towel or a micro fibre cloth.

\$20.⁰⁰
\$23.⁰⁰ inc GST

SCHMICK MICK Salt Destroyer / Engine Flush

Schmick Mick Salt Destroyer effortlessly breaks down and dissolves salt deposits, eradicating them from causing short and long term damage of your equipment.

Directions: To remove salt on the surface apply as an all over spray in a Foaming Gun or Cannon. For an engine flush add 40mls to the Salt Wash Adaptor and connect directly to the Jetski or engine muffs.

SM1004 - 1L **\$27.⁰⁰** (ex GST) **\$31.⁰⁵** (inc GST)

SM1004-5 - 5L **\$68.⁵⁰** (ex GST) **\$78.⁷⁸** (inc GST)

SCHMICK MICK Accessories

SM2001
SM2002
SM2003
SM2004

PART NO.	Description	ex GST	inc GST
SM2001	100ml Salt Wash Adaptor	\$25. ⁰⁰	\$28. ⁷⁵
SM2002	Foaming Gun (connects to Garden Hose)	\$69. ⁵⁰	\$79. ⁹³
SM2003	Under Vehicle Washer (Pressure Washer)	\$140. ⁰⁰	\$161. ⁰⁰
SM2004	Blizzard Foam Gun (Connects to Pressure Washer)	\$100. ⁵⁰	\$115. ⁵⁸

ITM Silenced Cabinet - Piston Compressor Range

An intelligent design the quiet operation of screw compressor with the cost benefits of a piston compressor. Slower RPM to reduce noise and pump life.

FEATURES

- Twin cast iron cylinder oil lubricated pump with aluminium head (TM355-55270)
- Triple cast iron cylinder oil lubricated pump with aluminium head (TM355-10270 & TM355-75270)
- Soundproof cabinet, compact design and easy to use control panel
- Powerful high efficiency induction motor
- Soft start valve for electric motor protection
- Thermal overload protection with manual reset
- Full brass non-return valve
- Certified safety valve
- Tank Capacity: 270L
- Max Pressure: 147psi (10 bar)

5.5HP

Motor: 5.5HP - Three Phase 415V
FAD: 465L/min (16.4 CFM)

7.5HP

Motor: 7.5HP - Three Phase 415V
FAD: 595L/min (21.1 CFM)

10HP

Motor: 10HP Three Phase 415V
FAD: 960L/min (33.9 CFM)



PART NO.	Horse Power	Pump Displacement	Pump	ex GST	inc GST
TM355-55270	5.5	702L/min (24.8CFM)	853rpm	\$5199. ⁰⁰	\$5978. ⁸⁵
TM355-75270	7.5	900L/min (31.8CFM)	950rpm	\$5799. ⁰⁰	\$6668. ⁸⁵
TM355-10270	10	1269L/min (44.8CFM)	950rpm	\$6299. ⁰⁰	\$7243. ⁸⁵

ITM 2HP Belt Drive Air Compressor

Code No. ABAC351-20050

FEATURES

- Twin cylinder belt drive pump
- Premium Condor pressure switch
- Filter regulator & twin Nitto-style coupler outlets
- 3 year motor & pump warranty
- Soft start valve & full brass non- return vave

SPECIFICATIONS

- Motor HP: 2HP
- Tank Capacity: 50L
- Power Source: 240V (10 AMP)
- Max Pressure: 145 PSI (10 Bar)
- Free Air Delivery: 245 L/min (8.6 CFM)
- Pump Displacement: 295 L/min (10.4 CFM)
- Pump RPM: 1,200
- Noise: 71dB at pump
- Net Weight: 70kg



\$1829.⁰⁰

\$2103.³⁵ inc GST

ITM 3HP Belt Drive Air Compressor

Code No. ABAC351-30100

FEATURES

- Twin cylinder belt drive pump
- Premium Condor pressure switch
- Filter regulator & twin Nitto-style coupler outlets
- 3 year motor & pump warranty
- Soft start valve & full brass non- return vave

SPECIFICATIONS

- Motor HP: 3 HP
- Tank Capacity: 100 L
- Power Source: 240V (15 AMP)
- Max Pressure: 145 PSI (10 Bar)
- Free Air Delivery: 400 L/min (14.1 CFM)
- Pump Displacement: 490 L/min (17.3 CFM)
- Pump RPM: 1,000
- Noise: 73dB at pump.
- Net Weight: 93kg



\$2299.⁰⁰

\$2643.⁸⁵ inc GST

ITM Hybrid Polymer Air Hose (with Fittings)



- Features**
- Hybrid polymer High-Flex hose.
 - Anti-kink technology, the hose will not kink when under pressure.
 - Superior all weather flexibility -5°C to 65°C.
 - Hi-visibility for safety.
 - Max working pressure: 300 PSI

Part No.	Length	Internal Diameter	Fitting	ex GST	inc GST
TM300-315	15M	3/8" (10mm)	1/4" BSP Male	\$66.00	\$75.90
TM300-315N	15M	3/8" (10mm)	Nitto Style	\$95.00	\$109.25
TM300-330	30M	3/8" (10mm)	1/4" BSP Male	\$115.50	\$132.83
TM300-330N	30M	3/8" (10mm)	Nitto Style	\$162.00	\$186.30
TM300-415	15M	1/2" (12.5mm)	Nitto Style	\$95.00	\$109.25
TM300-430	30M	1/2" (12.5mm)	Nitto Style	\$191.00	\$219.65

ITM Hybrid Polymer PVC Air Hose (with Fittings)



- Features**
- High quality durable non-marking PVC air hose.
 - Nitto style quick release fittings.
 - Bend restrictor extends hose line.
 - Grease, oil and abrasion resistant.
 - Max working pressure: 300 PSI
 - Internal Diameter: 3/8" (10mm)

TM300-210 - 10M	\$66.00 (ex GST)	\$75.90 (inc GST)
TM300-220 - 20M	\$110.50 (ex GST)	\$127.08 (inc GST)
TM300-230 - 30M	\$150.00 (ex GST)	\$172.50 (inc GST)

\$143.00

\$164.45 inc GST

ITM Hybrid Polymer Air Hose (No Fittings)



- Features**
- Hybrid polymer High-Flex hose.
 - Anti-kink technology, the hose will not kink under pressure.
 - Superior all weather flexibility -5°C to 65°C.
 - Hi-visibility for safety.
 - Max working pressure: 300 PSI

Part No.	Length	Internal Diameter	ex GST	inc GST
TM300-3100	100M	3/8" (10mm)	\$383.00	\$440.45
TM300-4100	100M	1/2" (12.5mm)	\$507.50	\$583.63
TM300-5100	100M	3/4" (19mm)	\$863.00	\$992.45

ITM Hybrid Polymer PVC Air Hose (No Fittings)



- Features**
- High quality durable non-marking PVC air hose.
 - Nitto style quick release fittings.
 - Bend restrictor extends hose line.
 - Grease, oil and abrasion resistant.
 - Max working pressure: 300 PSI

Part No.	Length	Internal Diameter	ex GST	inc GST
TM300-120	20M	3/8" (10mm)	\$47.50	\$54.63
TM300-130	30M	3/8" (10mm)	\$76.50	\$87.98
TM300-1100	100M	3/8" (10mm)	\$191.00	\$219.65
TM300-1200	200M	3/8" (10mm)	\$391.00	\$449.65

ITM Manual Air Hose Reel (with Fittings)



- FEATURES**
- Braided PVC Hose.
 - Durable steel powder coated frame.
 - Wall mount bracket included.
 - Bend restrictor extends hose life.

- SPECIFICATIONS**
- Internal Diameter: 8mm
 - Max. Working Pressure: 300psi
 - Leader Hose Length: 1 metre
 - 1/4" BSP Male Fitting

TM300-030 - 30m
\$287.00 (ex GST) \$330.05 (inc GST)

TM300-040 - 40m
\$315.50 (ex GST) \$362.83 (inc GST)

ITM Retractable Air Hose Reel w/ 10mm x 15M PVC Air Hose



Code No. TM300-015

- FEATURES**
- Reinforced PVC Hose.
 - Auto lock to any required length.
 - Auto track guided hose layering system.
 - Adjustable hose stopper.
 - Detachable 180° swivel mounting bracket.

- SPECIFICATIONS**
- Max Working Pressure: 250 PSI
 - Leader Hose Length: 1.5m
 - Hose I.D.: 3/8" (10mm)
 - 1/4" BSP Male Fitting

\$231.50

\$266.23 inc GST

ITM Retractable Air Hose Reel w/ 10mm x 20M Hybrid Polymer Hose



Code No. TM300-020

- FEATURES**
- Hybrid Polymer High Flex Hose.
 - Superior all weather flexibility, no KINK, even in extreme temperatures -5°C to 65°C.
 - High visibility fluoro orange hose.
 - Auto lock to any required length.
 - Auto track guided hose layering system.
 - Adjustable hose stopper.
 - Detachable 180° swivel mounting bracket.

- SPECIFICATIONS**
- Max Working Pressure: 250 PSI
 - Leader Hose Length: 2m
 - Hose I.D.: 3/8" (10mm)
 - 1/4" BSP Male Fitting

\$272.00

\$312.80 inc GST

ITM Steel Retractable Air Hose Reel w/ 10mm x 20M Hybrid Polymer Hose



Code No. TM300-022

- FEATURES**
- Fitted with ITM AIR High Flex Hose, this hose is made from a specially engineered hybrid polymer that provides superior all weather flexibility meaning that it stays flexible in the cold and won't kink in the heat, even in extreme temperatures -5°C to 65°C. The no memory technology means that it won't hold a coiled shape like regular air hose.
 - With a maximum working pressure of 250psi and the high visibility fluoro orange colour it is perfect for any workshop or tradesman on the go.

- SPECIFICATIONS**
- 10mm I.D. hose
 - 250psi Max pressure
 - High Visibility for safety
 - Heavy-duty all steel body construction
 - Auto-lock to any required length
 - Adjustable hose stopper
 - 2m leader hose
 - Industrial quality, for the professional
 - 1/4" BSP male fittings

\$240.50

\$276.58 inc GST

M7 1" Dr Air Impact Wrench

Code No. M7-NC8266S

FEATURES

- Twin hammer type
- Powerful 4500 ft-lb Max torque
- Lightweight magnesium front housing 6kg

SPECIFICATIONS

- Square Drive: 1"
- Bolt Capacity: 1-3/8" (35mm)
- Torque Range: 272-2448Nm (200-1800ft-lb)
- Max Torque @ 5 seconds: 4500Nm (2300ft-lb)
- Free Speed: 4000RPM
- Air Requirement: 7.5 CFM / 90 PSI / 1/2" Inlet
- Overall Length: 430mm
- Net Weight: 6kg
- Sound Pressure: 92dBA
- Vibration Level: 6.1m/s²


\$1285.00

 \$1477⁷⁵ inc GST

M7 1/2" Dr Air Mini Impact Wrench

Code No. M7-NC4610Q

FEATURES

- Jumbo Hammer Type.
- Q Series

SPECIFICATIONS

- Square Drive: 1/2"
- Bolt Capacity: 5/8" (16mm)
- Torque Range: 271-475Nm (200-350ft-lb)
- Max Torque at 5 seconds: 678Nm (500ft-lb)
- Free Speed: 9000 RPM
- Air Requirement: 4.4 CFM / 90 PSI / 1/4" Inlet
- Overall Length: 115.5mm
- Sound Pressure: 85dBA
- Vibration Level: 2.8m/s²
- Net Weight: 1.6kg


\$286.00

 \$328⁹⁰ inc GST

M7 1/2" Dr Air Impact Wrench Composite

Code No. M7-NC4255QH

FEATURES

- Extremely powerful & very lightweight.
- Twin hammer type clutch
- Patented EZ Grease Anvil
- Magnesium alloy & composite material construction.

SPECIFICATIONS

- Square Drive: 1/2"
- Bolt Capacity: 1" (25mm)
- Torque Range: 271-1085Nm (200-800ft-lb)
- Max Torque @ 5 seconds: 1627Nm (1200ft-lb)
- Free Speed: 8500 RPM
- Air Requirement: 4.8 CFM / 90 PSI / 1/4" Inlet
- Overall Length: 179mm
- Net Weight: 1.7kg
- Sound Pressure: 85dBA
- Vibration Level: 4.7m/s²


\$343.00

 \$394⁴⁵ inc GST

M7 3/4" Dr Air Impact Wrench

Code No. M7-NC6236QH

FEATURES

- Twin hammer type
- Q-Series
- Extra Heavy Duty quality and durability
- Patented and EZ grease avil

SPECIFICATIONS

- Square Drive: 3/4"
- Bolt Capacity: 1" (25mm)
- Torque Range: 271-1220Nm (200-900ft-lb)
- Max Torque @ 5 seconds: 1627Nm (1200ft-lb)
- Free Speed: 7500 RPM
- Air Requirement: 5.5 CFM / 90 PSI / 1/4" Inlet
- Overall Length: 171mm
- Net Weight: 2.68kg
- Sound Pressure: 83dBA
- Vibration Level: 4.5m/s²


\$550.50

 \$633⁰⁸ inc GST

M7 3/4" Dr Air Impact Wrench Composite

Code No. M7-NC6255QH

FEATURES

- HUGE 1400ft-lb after 5 seconds in reverse!
- Patent grease hole makes greasing process extremely efficient.

SPECIFICATIONS

- Square Drive: 3/4"
- Bolt Capacity: 1" (25mm)
- Torque Range: 271-1491 Nm (200-1100 ft-lb)
- Max Torque @ 5 seconds: 1890Nm (1400ft-lb)
- Free Speed: 8500 RPM
- Air Requirement: 4.8 CFM (136 LPM) / 90 PSI / 1/4" Inlet
- Overall Length: 179mm
- Net Weight: 1.9kg
- Sound Pressure: 85dBA
- Vibration Level: 4.5m/s²


\$515.00

 \$592²⁵ inc GST

M7 3/4" Dr Air Impact Wrench Composite

Code No. M7-NC6266-6

FEATURES

- Spring mounted rotor blades for extra durability.
- Magnesium housing

SPECIFICATIONS

- Anvil Length: 6"
- Square Drive: 3/4"
- Bolt Capacity: 30mm
- Vibration Level: 5.9m/s²
- Torque Range: 271-1760Nm (200-1300ft-lb)
- Max Torque @ 5 seconds: 2034Nm (1500ft-lb)
- Free Speed: 6000RPM
- Air Requirement: 5.9CFM / 90PSI
- Air Inlet: 1/4"
- Overall Length: 205mm
- Net Weight: 3.0kg
- Sound Pressure: 88.0dBA


\$815.00

 \$937²⁵ inc GST

M7 3/4" Dr Air Impact Wrench

Code No. M7-NC6217

FEATURES

- Twin hammer type

SPECIFICATIONS

- Square Drive: 3/4"
- Bolt Capacity: 1-1/8" (30mm)
- Torque Range: 200-1300 ft-lb / 271-1762 Nm
- Max Torque at 5 seconds: 1400 ft-lb / 1898 Nm
- Free Speed: 4800 RPM
- Air Requirement: 5.4 CFM / 90 PSI / 1/2" Inlet
- Overall Length: 215mm
- Net Weight: 5kg
- Sound Pressure: 92dBA
- Vibration Level: 6.1m/s²


\$946.50

 \$1088⁴⁸ inc GST

M7 3/4" Dr Air Impact Wrench Composite

Code No. M7-NC6201

FEATURES

- Twin hammer type.

SPECIFICATIONS

- Square Drive: 3/4"
- Bolt Capacity: 1-3/16" (30mm)
- Torque Range: 200-1200 ft-lb / 271 - 1627 Nm
- Max Torque at 5 seconds: 1450 ft-lb / 1966 Nm
- Free Speed: 5700 RPM
- Air Requirement: 3.7 CFM / 90 PSI / 1/4" Inlet
- Overall Length: 222mm
- Net Weight: 3.7kg
- Sound Pressure: 88dBA
- Vibration Level: 5.9m/s²


\$753.00

 \$865⁹⁵ inc GST

M7 1/2" Dr Air Ratchet Wrench

Code No. M7-NE432

FEATURES

- 1/2" Square Drive Air Ratchet Wrench • Quick Release

SPECIFICATIONS

- Square Drive: 1/2"
- Max Torque @ 5 seconds: 80Nm (60ft-lb)
- Free Speed: 160 RPM
- Overall Length: 265mm
- Sound Pressure: 89.8dBA
- Torque Range: 13.5-61Nm (10-45ft-lb)
- Air Requirement: 4 CFM / 90 PSI / 1/4" Inlet
- Net Weight: 1.22kg
- Vibration Level: 5.2m/s²


\$161.50

 \$185⁷³ inc GST

M7 1/2" Dr Air Impact Wrench Angle

Code No. M7-NE499

FEATURES

- Mighty innovative, convenient forward & reverse ring control.
- Mighty small, easy to reach narrow spaces

SPECIFICATIONS

- Square Drive: 1/2"
- Bolt Capacity: 9/16" (14mm)
- Free Speed: 7500 RPM
- Overall Length: 340mm
- Vibration Level: 9.9m/s²
- Max torque @ 5 sec: 339Nm (250ft/lb)
- Torque Range: 68-203Nm (50-150ft-lb)
- Air Requirement: 2.54 CFM / 90 PSI / 1/4" Inlet
- Sound Pressure: 93dBA


\$563.00

 \$647⁴⁵ inc GST

M7 3/8" Dr Air Ratchet Wrench Stubby

Code No. M7-NE351R



FEATURES

- 3/8" Square Drive Mini Air Ratchet Wrench

SPECIFICATIONS

- Square Drive: 3/8"
- Torque Range: 6.7-20Nm (5-15ft-lb)
- Max Torque at 5 seconds: 30Nm (22ft-lb)
- Free Speed: 350 RPM
- Air Requirement: 3 CFM / 90 PSI / 1/4" Inlet
- Overall Length: 125mm
- Net Weight: 0.5kg
- Sound Pressure: 89dBA
- Vibration Level: 4.4m/s²

\$172.50
\$198³⁸ inc GST

M7 1/2" Dr Air Ratchet Wrench

Code No. M7-NE443



FEATURES

- 1/2" Square Drive Air Ratchet Wrench

SPECIFICATIONS

- Square Drive: 1/2"
- Max Torque @ 5 seconds: 135.6Nm (100ft-lb)
- Free Speed: 160 RPM
- Overall Length: 280mm
- Sound Pressure: 84dBA
- Torque Range: 13.5-74Nm (10-55ft-lb)
- Air Requirement: 4 CFM / 90 PSI / 1/4" Inlet
- Net Weight: 1.3kg
- Vibration Level: 4.4m/s²

\$175.00
\$201²⁵ inc GST

M7 Air Stapler 90 Series

Code No. M7-SU9040



FEATURES
Suitable for:

- Furniture manufacturing.
- Kitchen / cabinet manufacture.
- Flooring

SPECIFICATIONS

- Gauge: 18
- Series: 90
- Staple Length: 9.5 - 40mm
- Shank Thickness: 5.8mm
- Shank Width: 1.25 x 1.0mm
- Load Capacity: 100 Staples
- Net Weight: 2.18kg
- Working Pressure: 90PSI

\$601.00
\$691¹⁵ inc GST

M7 Air Hydraulic Riveters



SPECIFICATIONS

- Air Inlet: 1/4"
- Superb quality pneumatic air riveter.
- Sound Pressure: 79.7 dBA

M7-PA201 - 14mm	\$626.50 (ex gst)	\$720.48 (inc gst)
M7-PA211 - 18mm	\$752.00 (ex gst)	\$864.80 (inc gst)
M7-PA301 - 16mm	\$243.50 (ex gst)	\$280.03 (inc gst)

SPECIFICATIONS

- Air Requirement: 90PSI / 2.32CFM
- Vibration Level: 0.5m/s²
- Capacity: 2.4-6.4mm
- Air Requirement: 90PSI / 2.9CFM
- Vibration Level: 0.8m/s²
- Capacity: 2.4-6.4mm
- Air Requirement: 90PSI / 1.48CFM
- Vibration Level: 0.3m/s²
- Capacity: 2.4-4.8mm

M7 Air Rivet Nut Tools



SPECIFICATIONS

- Air Requirements: 90 PSI / 7.8 CFM
- Inlet: 1/4"
- Sound Pressure: 86 dBA
- Vibration Level: 1.6m/s²

M7-PB1308	\$587.50 (ex gst)	\$675.63 (inc gst)
M7-PB1310	\$666.00 (ex gst)	\$765.90 (inc gst)

Capacity: M6 & M8 (Imperial mandrels also available)
• Free Speed: 600 RPM

Capacity: M8 & M10 (Imperial mandrels also available)
• Free Speed: 400 RPM

M7 Air Hydraulic Nut Setter



Code No. M7-PB2402

FEATURES

- Suitable for use with: Steel M4 - M10 & Stainless steel M4 - M8
- Comes with mandrel sizes: M4, M5, M6, M8 & M10

SPECIFICATIONS

- Traction Power: 3638lbf / 1650kgf
- Stroke Length: 9mm
- Capacity: Steel M4 - M10 & Stainless Steel M4 - M8
- Air Requirements: 90PSI / 1.5L/cycle
- Air Inlet: 1/4"
- Sound Pressure: 82 dBA
- Vibration Level: 0.8m/s²

\$816.00
\$938⁴⁰ inc GST

M7 Air Die Grinders



Safety lever throttle
• Inlet: 1/4"

M7-QA116A - 345mm	\$325.50 (ex gst)	\$374.33 (inc gst)
M7-QA315B - 280mm	\$218.00 (ex gst)	\$250.70 (inc gst)

M7-QA116A

- Collect Size: 3 & 6mm
- Rated Power: 0.5HP
- Vibration Level: 1.8m/s²
- Free Speed: 22000 RPM
- Sound Pressure: 85 dBA
- Air Requirements: 5 CFM / 90 PSI

M7-QA315B

- Extended air die grinder.
- Free Speed: 25000 RPM
- Sound Pressure: 81.5 dBA
- Air Requirements: 10 CFM / 90 PSI
- Collet Size: 1/4" & 1/8"
- Rated Power: 0.3HP
- Vibration Level: 1.8m/s²

M7 160mm Air Die Grinder (Angle Head)



Code No. M7-QA611B

FEATURES


- 90° angle head.
- Safety lever throttle

SPECIFICATIONS

- Inlet: 1/4"
- Collet Size: 1/4" & 1/8"
- Free Speed: 19000 RPM
- Overall Length: 160mm
- Air Requirements: 10 CFM / 90 PSI
- Rated Power: 0.3HP
- Sound Pressure: 74.4 dBA
- Vibration Level: 1.7m/s²

\$153.50
\$176.53 inc GST

M7 Air Die Grinder



Metal front cap.
• Air Requirements: 10 CFM / 90 PSI

Safety lever throttle
• Inlet: 1/4"

M7-QA111A - 155mm	\$104.50 (ex gst)	\$120.18 (inc gst)
M7-QA111B - 155mm	\$113.00 (ex gst)	\$129.95 (inc gst)
M7-QA210B - 190mm	\$177.00 (ex gst)	\$203.55 (inc gst)

M7-QA111A

- Collet Size: 3 & 6mm
- Rated Power: 0.3HP
- Vibration Level: 1.8m/s²
- Free Speed: 25000 RPM
- Sound Pressure: 81.5 dBA

M7-QA111B

- Collet Size: 1/4" & 1/8"
- Rated Power: 0.3HP
- Vibration Level: 1.8m/s²
- Free Speed: 25000 RPM
- Sound Pressure: 81.5 dBA

M7-QA210B

- Quick Release Collet
- Free Speed: 20000 RPM
- Sound Pressure: 75.7 dBA
- Collet Size: 1/4"
- Rated Power: 0.9HP
- Vibration Level: 0.8m/s²

M7 177mm Air Die Grinder (Angle Head)



Code No. M7-QA632B

FEATURES

- 97° angle head.
- Straight drive air motor in head with no gears to wear.
- Safety lever throttle

SPECIFICATIONS

- Collet Size: 1/4" & 1/8"
- Free Speed: 22000 RPM
- Air Requirements: 12.3 CFM / 90 PSI
- Inlet: 1/4"
- Overall Length: 177mm
- Rated Power: 0.4HP
- Net Weight: 0.5kg
- Sound Pressure: 75 dBA
- Vibration Level: 2.5m/s²

\$184.50
\$212.18 inc GST

M7 1/4" Dr Mini Die Grinder

Code No. M7-QA651B

FEATURES
• Superb quality pneumatic die grinder.

SPECIFICATIONS
• Collet Size: 1/4"
• Free Speed: 18000 RPM
• Air Requirements: 2.7 CFM / 90 PSI
• Inlet: 1/4"
• Overall Length: 127mm
• Net Weight: 0.5kg
• Sound Pressure: 74 dBA
• Vibration Level: 0.3m/s²

\$115.00
\$132.25 inc GST



M7 140mm Air Engraving Pen

Code No. M7-QA511

FEATURES
• Comfortable handle allows smooth operation.
• Roll throttle
• Longer lifetime and lower vibration.
• Stainless steel front housing eliminates rust.

SPECIFICATIONS
• Blows Per Minute: 13000BPM
• Hose Length: 1420
• Air Requirements: 1 CFM / 90 PSI
• Inlet: 1/4"
• Overall Length: 140mm
• Sound Pressure: 78 dBA
• Vibration Level: 0.6m/s²
• Net Weight 0.23kg

\$164.00
\$188.60 inc GST



M7 1/4" Hex Air Screwdriver Straight Type

Code No. M7-RA608

FEATURES
• Air inlet: 1/4"
• Screw Capacity: M8
• Air Screwdriver (Twin Dog Type)

SPECIFICATION
• Chuck Size: 1/4" (6.35mm)
• Overall Length: 8-9/16" (217mm)
• Torque Range: 5-58Nm (3.7-42.8ft-lb)
• Free Speed: 8000rpm
• Avg Air Consumption: 4.6CMF (130L/min)
• Air Pressure: 90PSI (6.3bar)
• Air Hose: 3/8"
• Sound Pressure: 86dBA
• Vibration Level: 3.5m/s²

\$709.50
\$815.93 inc GST



M7 180mm Angle Grinder

Code No. M7-QB197QM

FEATURES
• Safety lever throttle.
• Grinding wheel not included
• Extra Heavy Duty

SPECIFICATIONS
• Wheel Diameter: 180mm (7")
• Spindle Size: M14 x 2.0
• Free Speed: 7000 RPM
• Air Requirements: 6 CFM / 90 PSI
• Inlet: 3/8"
• Overall Length: 353mm
• Rated Power: 2.2HP
• Net Weight: 3.1kg
• Sound Pressure: 77 dBA
• Vibration Level: 1.5m/s²

\$1715.00
\$1972.25 inc GST



M7 180mm Wet Grinder

Code No. M7-QB197QMW

FEATURES
• Extra Heavy Duty

SPECIFICATIONS
• Wheel Diameter: 180mm (7")
• Spindle Size: M14 x 2.0
• Free Speed: 7000 RPM
• Air Requirements: 6 CFM / 90 PSI
• Inlet: 3/8"
• Overall Length: 353mm
• Rated Power: 2.2HP
• Net Weight: 3.1kg
• Sound Pressure: 77 dBA
• Vibration Level: 1.5m/s²

\$1550.00
\$1782.50 inc GST



M7 Air Belt Sanders

M7-QB321 - 10x330mm
• Free Speed: 16000RPM

\$242.00 (ex GST)

\$278.30 (inc GST)

M7-QB322 - 20x520mm
• Free Speed: 16000RPM

\$360.50 (ex GST)

\$414.58 (inc GST)

M7-QB324 - 12.7x610mm
• Free Speed: 16000RPM

\$295.00 (ex GST)

\$339.25 (inc GST)

M7-QB313 - 30x540mm
• Free Speed: 13000RPM

\$597.00 (ex GST)

\$686.55 (inc GST)



M7 2" / 3" Air Mini High Speed Sander

Code No. M7-QP212

FEATURES
• Superb quality pneumatic sander.
• Supplied with 3" Pad

SPECIFICATIONS
• Pad Diameter: 50mm, 75mm (2", 3")
• Free Speed: 18000RPM
• Spindle Size: 1/4" - 20
• Air Requirements: 2.1 CFM / 90 PSI
• Inlet: 1/4"
• Overall Length: 107mm
• Rated Power: 0.38HP
• Sound Pressure: 73 dBA
• Vibration Level: 0.9m/s²

\$121.00
\$139.15 inc GST



M7 150mm Air Random Orbital Sander No Vacuum

Code No. M7-QB56602

FEATURES
• Superb quality pneumatic orbital sander.

SPECIFICATIONS
• Pad Diameter: 150mm (6")
• Free Speed: 10000RPM
• Air Requirements: 3 CFM / 90 PSI
• Inlet: 1/4"
• Overall Length: 157mm
• Rated Power: 0.24HP
• Sound Pressure: 81.6 dBA
• Vibration Level: 71m/s²
• Orbit: 5mm
• Net Weight: 0.68kg

\$242.50
\$278.88 inc GST



M7 High Speed Sander

Code No. M7-QP215

FEATURES
• Superb quality pneumatic sander.

SPECIFICATIONS
• Pad Diameter: 75mm, 115mm, 125mm (3", 4-1/2", 5")
• Free Speed: 16000RPM
• Air Requirements: 6.5 CFM / 90 PSI
• Inlet: 1/4"
• Overall Length: 160mm
• Rated Power: 0.8HP
• Net Weight: 1.2kg
• Sound Pressure: 60 dBA
• Vibration Level: 1.8m/s²

\$151.00
\$173.65 inc GST



M7 Deburring Beveling Machine

Code No. M7-QC512

SPECIFICATIONS
• Chamfering depth:
• C0.1 - C2.0mm (13 gauge) aluminium & steel
• C0.1 - C1.2mm (18 gauge) stainless steel
• Cutting oscillations: 28000rpm
• Tool size: 105 x 64mm
• Air pressure: 90psi
• Sound level: 85db
• Air consumption: 2 CFM
• Air inlet: 1/4"
• Air hose: 3/8"
• Overall length: 105mm
• Weight: 0.5kg

\$554.50
\$637.68 inc GST



m7 MIGHTY SEVEN **3/8" Air Drill Heavy Duty**

Code No. M7-QE532

FEATURES

- 3 piece planetary gear for extra strength

SPECIFICATIONS

- Chuck Size: 3/8" (10mm)
- Free Speed: 2800RPM
- Motor: 0.7hp
- Air Requirements: 4.8 CFM / 90 PSI
- Inlet: 1/4"
- Overall Length: 243mm
- Sound Pressure: 90 dBA
- Vibration Level: 2m/s²
- Net Weight: 1.23kg



\$442.00
\$508³⁰ inc GST

m7 MIGHTY SEVEN **3/8" Air Right Angle Drill Keyless Chuck**

Code No. M7-QE633

SPECIFICATIONS

- Chuck Size: 3/8" (10mm)
- Free Speed: 1600RPM
- Reversible
- Air Requirements: 3 CFM / 90 PSI
- Inlet: 1/4"
- Overall Length: 210 x 110mm
- Sound Pressure: 72 dBA
- Vibration Level: 2.5m/s²
- Net Weight: 1.1kg



\$389.00
\$447³⁵ inc GST

m7 MIGHTY SEVEN **3/8" Air Drill Q Series**

Code No. M7-QE833

FEATURES

- Quiet Operation

SPECIFICATIONS

- Chuck Size: 3/8" (10mm)
- Free Speed: 1800RPM
- Air Requirements: 4 CFM / 90 PSI
- Inlet: 1/4"
- Overall Length: 185mm
- Sound Pressure: 83 dBA
- Vibration Level: 0.3m/s²
- Net Weight: 1.1kg



\$124.00
\$142.60 inc GST

m7 MIGHTY SEVEN **1/2" Air Drill Q Series**

SPECIFICATIONS

- Chuck Size: 1/2" (13mm)
- Air Requirements: 4 CFM / 90 PSI
- Inlet: 1/4"
- Overall Length: 210mm
- Sound Pressure: 83 dBA
- Vibration Level: 0.3m/s²
- Motor: 0.45hp
- Net Weight: 1.8kg

M7-QE843 - 800RPM **\$178.50** (ex GST) **\$205.28** (inc GST)

M7-QE845 - 500RPM **\$207.50** (ex GST) **\$238.63** (inc GST)

- Quiet Operation
- Superb quality pneumatic drill.



m7 MIGHTY SEVEN **Air Saw Gear Driven Low Vibration**

Code No. M7-QD501

FEATURES

- Chuck can mount air saw blades, Sawzall blades & files
- Robust and durable gear drive
- Soft rubber hand grip
- Includes: 1x File, 1x Sawzall blade & 1x Air saw

SPECIFICATIONS

- Stroke Length: 10mm
- Strokes Per Minute: 7000 S.P.M.
- Air Requirement: 4.5 CFM / 90 PSI / 1/4" Inlet
- Overall Length: 296mm
- Net Weight: 1.2kg
- Sound Pressure: 78
- Vibration Level: 4.5m/s²



\$661.00
\$760¹⁵ inc GST

m7 MIGHTY SEVEN **Air Shear**

Code No. M7-QG202

FEATURES

- Aluminium sheet cut capacity: 1.6mm.
- Mild steel sheet cut capacity: 1.2mm.
- Stainless steel sheet cut capacity: 1.0mm

SPECIFICATION

- Strokes/min: 2600 S.P.M
- Air Requirements: 6.5 CFM / 90 PSI
- Inlet: 1/4"
- Overall length: 210mm
- Weight: 1.10kg
- Air hose: 3/8"
- Sound Pressure: 89.1 dBA
- Vibration Level: 2.9m/s²



\$138.00
\$158⁷⁰ inc GST

m7 MIGHTY SEVEN **Air Nibbler Up Cut Style**

Code No. M7-QG103

FEATURES

- Strengthened punch for increased tool life.
- Pull type cutting head for durability.
- Rear exhaust reduces the noise level.

SPECIFICATIONS

- Strokes Per Min: 2600
- Cut Capacity: 1.6mm
- Air Requirements: 3 CFM / 90 PSI
- Inlet: 1/4"
- Overall Length: 193mm
- Sound Pressure: 88 dBA
- Vibration Level: 2.8m/s²



\$147.00
\$169⁰⁵ inc GST

m7 MIGHTY SEVEN **175mm Air Hammer**

Code No. M7-SC211C

FEATURES

- Comes with 5 pce chisel kit

SPECIFICATIONS

- Shank Type: Round
- Shank Size: 10.2mm (0.401")
- Blows Per Minute: 3200BPM
- Air Requirements: 4 CFM / 90 PSI
- Inlet: 1/4"
- Overall Length: 175mm
- Sound Pressure: 98 dBA
- Vibration Level: 12.3m/s²



\$149.50
\$171⁹³ inc GST

m7 MIGHTY SEVEN **Air Flux Chipper 13mm Square Shank**


Code No. M7-SN1032

FEATURES

- Superb quality pneumatic flux chipper.

SPECIFICATIONS

- Shank Size: 13mm (0.510")
- Blows Per Minute: 4000BPM
- Air Requirements: 4.23 CFM / 90 PSI
- Inlet: 1/4"
- Overall Length: 290mm
- Sound Pressure: 91 dBA
- Vibration Level: 14.5m/s²
- Net Weight: 1.33kg



\$367.00
\$422⁰⁵ inc GST

m7 MIGHTY SEVEN **Air Needle Scaler**

Code No. M7-SN1288

FEATURES

- Needle size: 3 x 123mm (12 per set)
- Great compact design

SPECIFICATIONS

- Stroke Length: 32mm
- Blows Per Minute: 5500BPM
- Air Requirements: 3 CFM / 90 PSI
- Inlet: 1/4"
- Overall Length: 290mm
- Sound Pressure: 86 dBA
- Vibration Level: 7.67m/s²
- Net Weight: 1.3kg



\$208.50
\$239⁷⁸ inc GST

ITM PRO35 Magnetic Base Drill

Code No. HMPRO35K1

\$1329.00

\$1528³⁵ inc GST

BONUS

3 PIECE ANNULAR CUTTER SET



Sizes

- 14 x 25mm
- 18 x 25mm
- 22 x 25mm

- The Holemaker PRO 35 is a high quality, compact and robust, fully featured machine. Weighing in at just 10kg, this machine is ideal for those on-site and overhead tasks.
- Features include a gravity feed coolant system with a magnetically attached coolant bottle, allowing coolant feed whilst drilling in vertical applications.
- The feed handles can be placed on either the left or right hand side, providing further versatility when using this compact machine in tight positions.
- Dual rail slide system provides rigidity and eliminates the need for gib adjustments.

• With BONUS 3 Piece Annular Cutter Set

- Sizes
- 14mm x 25mm
 - 18mm x 25mm
 - 22mm x 25mm
 - Pilot Pin SPI6003

* 12mm twist drill capacity using Weldon shank twist drill bits.

Specifications:

- Capacity (Diameter/max) - 35mm
- Height (min / max) - 306mm / 376mm
- Motor Input Power - 1000 Watt
- Speed - 350rpm
- Weight - 10.0kg
- DOC (Depth of Cut/max) - 52mm
- Capacity (Twist Drills) - 16mm (Weldon Shank ONLY)
- Motor Output Power - 920 Watt
- Magnet Dead Lift - 9500Nm (25mm steel plate)

ITM PRO36AD Magnetic Base Angle Drill

Code No. HMPRO36AD



FEATURES

- Accepts also twist drills with 19.05mm (3/4") Weldon shank
- Integrated swarf guard
- Detachable feed lever (feat. ratchet) can be fixed from either side
- Lifting handle for easy transportation
- Cooling with a bottle

SPECIFICATIONS

- Capacity (Diameter): 36mm Capacity (Depth): 30mm
- Capacity (Twist Drill): 12mm Motor Power: 920 watt
- Input Power: 1000 watt Single Phase 240V
- Speed: 370rpm
- Weight: 9.5kg
- Magnetic Dead Lift: 8900Nm on 25mm Steel Plate
- Stroke: 39mm
- Height: 176mm Constant Working Height
- Through Spindle Coolant System
- Smart Magnet Technology to Ensure Sufficient Magnetic Adhesion
- Comes complete in plastic carry case

\$2014.00

\$2316¹⁰ inc GST

ITM PRO42 Magnetic Base Drill

Code No. HMPRO42K1

\$1804.00

\$2074⁶⁰ inc GST

BONUS

5 PIECE ANNULAR CUTTER SET



Sizes

- 14 x 25mm
- 16 x 25mm
- 18 x 25mm
- 20 x 25mm
- 22 x 25mm

FEATURES

- European made machine
- Extra large 165mm stroke allowing the use of an optional 13mm twist drill chuck
- Through spindle coolant system, with an external side mounted gravity feed coolant tank
- The feed handles can be placed on either the left or right hand side, for increased versatility
- Smart magnet technology to ensure sufficient magnetic adhesion
- Integrated cutter guard for increased user safety
- Supplied in a blow mould plastic carry case
- Grub screw arbor system, which fastens positively onto Holemaker cutters
- 13mm drill chuck SADCA-13 available separately

* with Bonus 5 Piece Annular Cutter Set

- Sizes
- 14 x 25mm
 - 16 x 25mm
 - 18 x 25mm
 - 20 x 25mm
 - 22 x 25mm
 - Pilot Pin

SPECIFICATIONS

- Capacity (Diameter): 42mm
- Capacity (Twist Drills): 10mm (Jobber Drills)
- Capacity (Twist Drills): 16mm (Weldon Shank Drills)
- Input Power: 1100 Watt Single Phase 240V
- Weight: 12.5kg
- Stroke: 165mm
- Capacity (Depth): 52mm
- Capacity (Twist Drills): 13mm (Stub Drills)
- Motor Power: 1020 Watt
- Speed: 440rpm
- Magnetic Dead Lift: 9,900Nm on 25mm Steel Plate
- Height (Min. / Max.): 346 / 511mm

ITM PRO65 Magnetic Base Drill

Code No. HMPRO65



Features

- European made machine
- New 1600 watt Italian motor
- Dual rail slide system increases machine rigidity and cutter life
- Through cutter coolant system
- Feed handles can be placed on both sides
- Supplied in a blow mould carry case

Specifications

- Capacity (Diameter): 65mm
- Capacity (Depth): 75mm
- 3/4" Weldon shank tool holder
- 1600 Watt 240V Motor
- 2 Speed gearbox (160 / 390rpm)
- Lightweight, only 17kg
- 11000Nm Magnetic dead lift on 25mm steel plate
- 95mm Stroke
- Height 418mm min / 513mm max

\$3117.50

\$3585¹³ inc GST



Part No.	Hole Diameter	Depth of Cut	Price		Part No.	Hole Diameter	Depth of Cut	Price	
			ex GST	inc GST				ex GST	inc GST
AS1225	12mm	25mm	\$35.00	\$40.25	AS1250	12mm	50mm	\$44.50	\$51.18
AS1325	13mm	25mm	\$35.00	\$40.25	AS1350	13mm	50mm	\$44.50	\$51.18
AS1425	14mm	25mm	\$35.00	\$40.25	AS1450	14mm	50mm	\$45.50	\$52.33
AS1525	15mm	25mm	\$37.50	\$43.13	AS1550	15mm	50mm	\$47.50	\$54.53
AS1625	16mm	25mm	\$38.00	\$43.70	AS1650	16mm	50mm	\$48.00	\$55.20
AS1725	17mm	25mm	\$39.50	\$45.43	AS1750	17mm	50mm	\$50.00	\$57.50
AS1825	18mm	25mm	\$39.50	\$45.43	AS1850	18mm	50mm	\$52.50	\$60.38
AS1925	19mm	25mm	\$42.50	\$48.88	AS1950	19mm	50mm	\$55.50	\$63.83
AS2025	20mm	25mm	\$43.50	\$50.03	AS2050	20mm	50mm	\$60.00	\$69.00
AS2125	21mm	25mm	\$46.50	\$53.48	AS2150	21mm	50mm	\$61.50	\$70.73
AS2225	22mm	25mm	\$49.50	\$56.93	AS2250	22mm	50mm	\$65.50	\$75.33
AS2325	23mm	25mm	\$53.50	\$61.53	AS2350	23mm	50mm	\$68.50	\$78.78
AS2425	24mm	25mm	\$54.00	\$62.10	AS2450	24mm	50mm	\$70.00	\$80.50
AS2525	25mm	25mm	\$55.00	\$63.25	AS2550	25mm	50mm	\$74.50	\$85.68
AS2625	26mm	25mm	\$56.50	\$64.98	AS2650	26mm	50mm	\$76.00	\$87.40
AS2725	27mm	25mm	\$60.00	\$69.00	AS2750	27mm	50mm	\$80.00	\$92.00
AS2825	28mm	25mm	\$60.50	\$69.58	AS2850	28mm	50mm	\$82.50	\$94.88
AS2925	29mm	25mm	\$63.00	\$72.45	AS2950	29mm	50mm	\$84.50	\$97.18
AS3025	30mm	25mm	\$65.00	\$74.75	AS3050	30mm	50mm	\$90.00	\$103.50
AS3125	31mm	25mm	\$67.50	\$77.63	AS3150	31mm	50mm	\$92.50	\$106.38
AS3225	32mm	25mm	\$68.00	\$78.20	AS3250	32mm	50mm	\$92.50	\$106.38
AS3325	33mm	25mm	\$76.50	\$87.98	AS3350	33mm	50mm	\$101.00	\$116.15
AS3425	34mm	25mm	\$82.00	\$94.30	AS3450	34mm	50mm	\$102.50	\$117.88
AS3525	35mm	25mm	\$83.50	\$96.03	AS3550	35mm	50mm	\$106.00	\$121.90
AS3625	36mm	25mm	\$88.50	\$101.78	AS3650	36mm	50mm	\$110.00	\$126.50
AS3725	37mm	25mm	\$94.00	\$108.10	AS3750	37mm	50mm	\$113.50	\$130.53
AS3825	38mm	25mm	\$96.50	\$110.98	AS3850	38mm	50mm	\$120.00	\$138.00
AS3925	39mm	25mm	\$100.50	\$115.58	AS3950	39mm	50mm	\$124.50	\$143.18
AS4025	40mm	25mm	\$102.00	\$117.30	AS4050	40mm	50mm	\$127.00	\$146.05
AS4125	41mm	25mm	\$106.50	\$122.48	AS4150	41mm	50mm	\$132.50	\$152.38
AS4225	42mm	25mm	\$111.50	\$128.23	AS4250	42mm	50mm	\$141.00	\$162.15
AS4325	43mm	25mm	\$116.00	\$133.40	AS4350	43mm	50mm	\$144.50	\$166.18
AS4425	44mm	25mm	\$123.50	\$142.03	AS4450	44mm	50mm	\$150.00	\$172.50
AS4525	45mm	25mm	\$129.00	\$148.35	AS4550	45mm	50mm	\$154.50	\$177.68
AS4625	46mm	25mm	\$132.50	\$152.38	AS4650	46mm	50mm	\$161.50	\$185.73
AS4725	47mm	25mm	\$138.00	\$158.70	AS4750	47mm	50mm	\$167.00	\$192.05
AS4825	48mm	25mm	\$140.50	\$161.58	AS4850	48mm	50mm	\$171.00	\$196.65
AS4925	49mm	25mm	\$145.50	\$167.33	AS4950	49mm	50mm	\$178.00	\$204.70
AS5025	50mm	25mm	\$154.00	\$177.00	AS5050	50mm	50mm	\$190.00	\$218.50
AS5125	51mm	25mm	\$161.00	\$185.15	AS5150	51mm	50mm	\$193.50	\$222.53
AS5225	52mm	25mm	\$170.00	\$195.50	AS5250	52mm	50mm	\$196.50	\$225.98
					AS5550	55mm	50mm	\$234.00	\$269.10

Holemaker Silver Series Annular Cutters

M2AL HIGH SPEED STEEL MATERIAL

M2AL High Speed Steel is a high alloy material with a hardness of up to 67.5 HRC, designed for increased endurance of the cutting edge and tool life.

STEP HARDENED PROCESS

This state of the art manufacturing process produces cutters with extremely hard tooth tips for increased cutter performance, while maintaining a softer body which is less susceptible to breakage than standard high speed steel cutters.

MULTI-CUT GEOMETRY

Provides smooth and fast cutting, with decreased chatter. This also increases the cutters ability to remove swarf away from the cut, and helps to enhance centering.

FULLY GROUND WITH INTERNAL RELIEF

This feature allows Holemaker cutters to produce reamed quality, burr-free holes and also helps to reduce torque and horsepower requirements.

UNIVERSAL SHANK

19.05mm (3/4") Universal Shank with 2 flat sections to suit most magnetic base drilling machines.

PILOT PIN DIAMETER

6.35mm (for 25mm DOC use SP16003, for 50mm DOC use SP16004)

ITM Twist Knot Cup Brushes

- * Red
- Wire Diameter - 0.50mm



Part No.	Dia.	Thread	Thread Adaptor	Max RPM	ex GST	inc GST
STEEL WIRE						
TM7000-050	50mm	1/4" Hex	-	12,000	\$11 ⁰⁰	\$12 ⁶⁵
TM7000-065	65mm	M14 x 2	M10 x 1.25 & M10 x 1.5	12,500	\$17 ⁰⁰	\$19 ⁵⁵
TM7000-075	75mm	M14 x 2	M10 x 1.25 & M10 x 1.5	12,500	\$20 ⁰⁰	\$23 ⁰⁰
TM7000-75B	75mm	M14 x 2	M10 x 1.25 & M10 x 1.5 (Boxed)	12,500	\$19 ⁰⁰	\$21 ⁸⁵
TM7000-100	100mm	M14 x 2	-	8,500	\$26 ⁰⁰	\$29 ⁹⁰
TM7000-125	125mm	M14 x 2	-	6,500	\$33 ⁰⁰	\$37 ⁹⁵
STAINLESS STEEL WIRE*						
TM7000-210*	100mm	M14 x 2	-	8,500	\$44 ⁰⁰	\$50 ⁶⁰
TM7000-265*	65mm	M14 x 2	M10 x 1.25 & M10 x 1.5	12,500	\$30 ⁵⁰	\$35 ⁰⁸
TM7000-275*	75mm	M14 x 2	M10 x 1.25 & M10 x 1.5	12,500	\$34 ⁵⁰	\$39 ⁶⁸

ITM Twist Knot Cup Brushes with Band

- * Red
- Wire Diameter - 0.50mm



Part No.	Dia.	Thread	Thread Adaptor	Max RPM	ex GST	inc GST
STEEL WIRE						
TM7001-065	65mm	M14 x 2	M10 x 1.25 & M10 x 1.5	12,500	\$22 ⁵⁰	\$25 ⁸⁸
TM7001-075	75mm	M14 x 2	M10 x 1.25 & M10 x 1.5	8,500	\$31 ⁰⁰	\$35 ⁶⁵
TM7001-100	100mm	M14 x 2	-	8,500	\$43 ⁰⁰	\$49 ⁴⁵
TM7001-125	125mm	M14 x 2	-	6,500	\$67 ⁰⁰	\$77 ⁰⁵
STAINLESS STEEL WIRE*						
TM7001-110*	100mm	M14 x 2	-	8,500	\$79 ⁰⁰	\$90 ⁸⁵
TM7001-175*	75mm	M14 x 2	M10 x 1.25 & M10 x 1.5	8,500	\$51 ⁰⁰	\$58 ⁶⁵

ITM Crimp Wire Cup Brushes

- Wire Diameter - 0.30mm



Part No.	Dia.	Thread	Thread Adaptor	Max RPM	ex GST	inc GST
STEEL WIRE						
TM7010-065	65mm	M14 x 2	M10 x 1.25 & M10 x 1.5	12,500	\$18 ⁰⁰	\$20 ⁷⁰
TM7010-075	75mm	M14 x 2	M10 x 1.25 & M10 x 1.5	12,500	\$19 ⁰⁰	\$21 ⁸⁵
TM7010-100	100mm	M14 x 2	-	8,500	\$23 ⁵⁰	\$27 ⁰³
TM7010-125	125mm	M14 x 2	-	6,500	\$34 ⁰⁰	\$39 ¹⁰
STAINLESS STEEL WIRE						
TM7010-275*	75mm	M14 x 2	M10 x 1.25 & M10 x 1.5	12,500	\$36 ⁵⁰	\$41 ⁹⁸

ITM Twist Knot Bevel Brushes

- * Red
- Wire Diameter - 0.50mm



Part No.	Dia.	Thread	Thread Adaptor	Max RPM	ex GST	inc GST
STEEL WIRE						
TM7002-110	100mm	M14 x 2	M10 x 1.25 & M10 x 1.5	12,500	\$19 ⁰⁰	\$21 ⁸⁵
TM7002-125	125mm	M14 x 2	-	12,500	\$24 ⁵⁰	\$28 ⁹⁸
STAINLESS STEEL WIRE*						
TM7002-210*	100mm	M14 x 2	M10 x 1.25 & M10 x 1.5	12,500	\$26 ⁰⁰	\$29 ⁹⁰

ITM Crimp Wire Wheels

Part No.	Dia.	Width	Max RPM	ex GST	inc GST
STEEL WIRE					
TM7012-150	150mm	19mm	6,000	\$30 ⁵⁰	\$35 ⁰⁸
TM7012-151	150mm	25mm	6,000	\$31 ⁰⁰	\$35 ⁶⁵
TM7012-200	200mm	20mm	4,500	\$36 ⁵⁰	\$41 ⁹⁸
TM7012-201	200mm	25mm	4,500	\$39 ⁵⁰	\$45 ⁴³
TM7012-251	250mm	32mm	3,000	\$91 ⁵⁰	\$105 ²³
STAINLESS STEEL WIRE*					
TM7012-220*	200mm	20mm	4,500	\$102 ⁰⁰	\$117 ⁵⁰
TM7012-415*	150mm	19mm	6,000	\$85 ⁰⁰	\$97 ⁷⁵



- Includes Multi Bore Adaptors
- Bore Size - 32mm
- Wire Diameter - 0.30mm

* Red

ITM Crimp Wire Bevel Brush Steel

Code No. TM7011-100

- Material: Steel Wire
- Diameter: 100mm
- Thread: M14 x 2
- Wire Diameter: 0.3mm
- Max RPM: 12,500



\$18.00
\$20⁷⁰ inc GST

ITM Twist Knot Pipeline Wheel Brush Steel

- Material: Steel Wire
 - Wire Diameter: 0.5mm
 - Thread: 22.2mm Bore
- | | | |
|-------------------------------|-----------------------------------|------------------------------------|
| TM7004-125
Max RPM: 12,500 | \$29⁰⁰ (ex gst) | \$33³⁵ (inc gst) |
| TM7004-178
Max RPM: 9,000 | \$48⁵⁰ (ex gst) | \$55⁷⁸ (inc gst) |



ITM Twist Knot End Brushes

- Shank - 1/4" Round
 - Max RPM - 20,000
 - Style - Solid End
 - Wire Diameter - 0.50mm
- | | | |
|--|-----------------------------------|------------------------------------|
| TM7005-019 - 19mm Steel Wire | \$13⁰⁰ (ex gst) | \$14⁹⁵ (inc gst) |
| TM7005-025 - 25mm Steel Wire | \$16⁵⁰ (ex gst) | \$18⁹⁸ (inc gst) |
| TM7005-125 - 25mm Stainless Steel Wire | \$20⁰⁰ (ex gst) | \$23⁰⁰ (inc gst) |



ITM Twist Knot Wheels

- Wire Diameter - 0.50mm



Part No.	Dia.	Thread	Adaptor	Max RPM	ex GST	inc GST
STEEL WIRE						
TM7003-100	100mm	M14 x 2	M10 x 1.25 & M10 x 1.5	20,000	\$22 ⁵⁰	\$25 ⁸⁸
TM7003-125	125mm	M14 x 2	M10 x 1.5	12,500	\$24 ⁵⁰	\$28 ¹⁸
TM7003-200	200mm	22.2mm Bore	Bore Adaptor 5/8" & 1/2"	6,000	\$41 ⁵⁰	\$47 ⁷³
STAINLESS STEEL WIRE*						
TM7003-225*	125mm	22.2mm Bore	5/8"	12,500	\$56 ⁵⁰	\$64 ⁹⁸

ITM High Speed Crimp Wire End Brushes

- Shank - 1/4" Round
 - Max RPM - 20,000
 - Style - Solid End
 - Wire Diameter - 0.30mm
- | | | |
|--|-----------------------------------|------------------------------------|
| TM7013-012 - 12mm Steel Wire | \$5⁵⁰ (ex gst) | \$6³³ (inc gst) |
| TM7013-019 - 19mm Steel Wire | \$7⁵⁰ (ex gst) | \$8⁶³ (inc gst) |
| TM7013-025 - 25mm Steel Wire | \$9⁵⁰ (ex gst) | \$10⁹³ (inc gst) |
| TM7013-125 - 25mm Stainless Steel Wire | \$14⁰⁰ (ex gst) | \$16¹⁰ (inc gst) |



ITM Crimp Wire Wheel Brushes



Part No.	Dia.	Shank	Width	Wire Diameter	Max RPM	ex GST	inc GST
STEEL WIRE							
TM7014-025	25mm	1/4" Round	6mm	0.2mm	20,000	\$5.50	\$6.33
TM7014-030	30mm	1/4" Round	9mm	0.2mm	20,000	\$6.00	\$6.90
TM7014-040	40mm	1/4" Round	11mm	0.2mm	20,000	\$7.00	\$8.05
TM7014-050	50mm	1/4" Round	10mm	0.3mm	15,000	\$7.50	\$8.63
TM7014-075	75mm	1/4" Round	18mm	0.3mm	15,000	\$11.00	\$12.65
STAINLESS STEEL WIRE							
TM7014-150	50mm	1/4" Round	17mm	0.3mm	15,000	\$22.00	\$25.30
TM7014-175	75mm	1/4" Round	18mm	0.3mm	15,000	\$24.00	\$27.60
BRASS WIRE							
TM7014-275	75mm	1/4" Round	18mm	0.3mm	15,000	\$32.50	\$37.38

ITM Crimp Wire Spindle Mounted Wheel Brushes



Part No.	Dia.	Shank	Width	Wire Diameter	Max RPM	ex GST	inc GST
STEEL WIRE							
TM7022-050	50mm	1/4" Hex	7mm	0.3mm	4,500	\$6.00	\$6.90
TM7022-075	75mm	1/4" Hex	10mm	0.3mm	4,500	\$7.50	\$8.63
TM7022-100	100mm	1/4" Hex	12mm	0.3mm	4,500	\$9.00	\$10.35

ITM Crimp Wire Spindle Mounted Cup Brush



Part No.	Dia.	Shank	Trim	Wire Diameter	Max RPM	ex GST	inc GST
STEEL WIRE							
TM7021-065	65mm	1/4" Hex	18mm	0.3mm	4,500	\$7.50	\$8.63
TM7021-075	75mm	1/4" Hex	10mm	0.3mm	4,500	\$8.50	\$9.78

ITM Nylon Spindle Mounted Wheel Brush

Material: Nylon
Wire: 80 Grit
Shank: 1/4" Hex
Max RPM: 4500



Code	Dia.	Width	ex GST	inc GST
TM7102-050	50mm	7mm	\$12.00	\$13.80
TM7102-075	75mm	10mm	\$14.00	\$16.00
TM7102-100	100mm	12mm	\$22.00	\$25.30

ITM Nylon Spindle Mounted Cup Brush

Code No. TM7101-075

- Material: Nylon
- Diameter: 75mm
- Shank: 1/4" Hex
- Max RPM: 4500
- Thickness: 7mm

\$17.50
\$20.13 inc GST



ITM Nylon Spindle Mounted Flapper Wheel

Code No. TM7103-100

- Material: Nylon
- Diameter: 100mm
- Shank: 1/4" Hex
- Wire: 80 Grit
- Max RPM: 4,500

\$23.50
\$27.03 inc GST



ITM Wire Brushes

Overall Length: 265mm
Wire Length: 25mm
Brush Length: 140mm

Code	Material	Colour	ex GST	inc GST
TM7040-001	Steel	Red	\$6.00	\$6.90
TM7040-002	Stainless Steel	Green	\$9.00	\$10.35
TM7040-003	Brass	Yellow	\$11.00	\$12.65



ITM 353mm Wire Brushes

Code	Material	Overall Length	Rows	Note	ex GST	inc GST
TM7050-004	Steel	353mm	3 x 19	-	\$7.00	\$8.05
TM7050-005	Steel	353mm	4 x 19	-	\$8.00	\$9.20
TM7050-007	Steel	353mm	3 x 19	with Scraper	\$8.00	\$9.20
TM7050-008	Stainless Steel	353mm	3 x 19	-	\$8.50	\$9.78
TM7050-009	Stainless Steel	353mm	4 x 19	-	\$10.50	\$12.08
TM7050-010	Brass	353mm	3 x 19	-	\$12.50	\$14.38
TM7050-011	Brass	353mm	4 x 19	-	\$15.50	\$17.83

ITM 6 Piece Crimp Wire Wheel Brush Kit

Code No. TM7016-006

- 6 Piece Kit Includes:
- 2 x 40mm Wire Wheel Brushes
 - 50mm Wire Wheel Brush
 - 63mm Wire Wheel Brush
 - 75mm Wire Wheel Brush
 - 50mm Cup Brush

\$19.00
\$21.85 inc GST



ITM 3 Piece Crimp Wire Brush Kit

Code No. TM7016-003

- 3 Piece Kit Includes:
- 50mm Wheel Brush
 - 50mm Cup Brush
 - 25mm End Brush

\$11.00
\$12.65 inc GST



ITM 5 Piece Crimp Wire Wheel Brush Kit

Code No. TM7016-008

- 5 Piece Kit Includes:
- 25mm Wire Wheel Brush
 - 38mm Wire Wheel Brush
 - 50mm Wire Wheel Brush
 - 63mm Wire Wheel Brush
 - 75mm Wire Wheel Brush
 - 3 x Arbors

\$13.00
\$14.95 inc GST



ITM 5 Piece Crimp Wire Brush Kit

Code No. TM7016-005

- 5 Piece Kit Includes:
- 50mm Cup Brush
 - 75mm Cup Brush
 - 50mm Wheel Brush
 - 75mm Wheel Brush
 - 25mm End Brush

\$23.00
\$26.45 inc GST



ITM 2 Piece Arbor Thread Adaptors

Code No. TM7030-002

- Pack of 2 Arbor Thread Adaptors
- M10 x 1.25
 - M10 x 1.50

\$6.00
\$6.90 inc GST





Bandsaw Variable Speed 240V 0.4HP Single Phase

Code No. UE125DV

FEATURES

- Swivel head.
- Variable blade speed.
- 0° to 60° Mitre cutting capacity.
- ON/OFF Trigger switch control.
- Automatic shut-off at end of cut.
- Emergency stop button.
- Manual or automatic operation.
- 12 months warranty.
- Comes complete with blade.
- Made in Taiwan.

SPECIFICATIONS

- **Motor:** 300W Single Phase (240V)
- **Blade Speed:** Variable Speed 23 to 75mpm
- **Blade Size:** 13 x 0.65 x 1440mm
- **Bed Height:** 100mm
- **Weight:** 22kg

Cutting Capacity			
Cutting Angle	Round	Square	Rectangle
90°	125mm	120mm	120 x 120mm
45° Right	70mm	70mm	120 x 70mm
60° Right	35mm	35mm	65 x 35mm

\$1595.00

\$1834²⁵ inc GST



Bandsaw 4 Speed 240V 1.0HP Single Phase

Code No. UE712A

FEATURES

- Horizontal & vertical cutting bandsaw.
- Quick positioning swivel vice enables cuts from 0° to 45°.
- Fully adjustable hydraulic down feed with separate on/off valve & automatic shut-off at end of cut.
- Incorporated recirculating coolant system.
- Non-voltage return ON/OFF switch & emergency stop switch.
- 4 Blade speeds allows precise cutting of different materials.
- Brass chip brush to help extend blade life.
- Adjustable material stop for repetitive production.
- Fitted on base with wheels for easy manoeuvring.
- 12 months warranty.
- Comes complete with blade.
- Made in Taiwan.

SPECIFICATIONS

- **Motor:** 1hp Single Phase (240V)
- **Blade Speed:** 4 Speed 22 / 33 / 45 / 65mpm
- **Blade Size :** 19 x 0.9 x 2360mm
- **Bed Height:** 572mm
- **Weight:** 130kg

Cutting Capacity			
Cutting Angle	Round	Square	Rectangle
90°	180mm	180mm	300 x 180mm
45° Right	110mm	110mm	120 x 115mm

\$3357.00

\$3860⁵⁵ inc GST



68L Branded Bar Fridge - 3 x Shelves

Code No. SC-68

- Volume: 68L
- Voltage: 220V~240V / 50Hz
- Input Power: 80W
- Power Consumption: 0.85kw.h/24h
- Refrerant: R600a/26g
- Climate Class: N
- Protection Class: I
- Weight: 24kg

\$599.00

\$688⁸⁵ inc GST



www.isl.nz

Stores advertised on this page of this catalogue are independent businesses. Every effort is made to ensure advertised stock is available, but due to factors beyond the control of ISL Industrial Limited (Importer), not all products in this catalogue are available at all stores. Prices for the products are recommended only. Regular prices may vary from store to store, the catalogue pricing is calculated in good faith as the average price at the time of preparation. ISL Industrial Limited (Importer) reserve the right to correct printing & pricing errors. **Additional freight charges may apply if product is ordered in.** All sizes shown are approximate only. Accessories shown do not come with product unless otherwise specified. Due to printing process, colours in this catalogue may vary slightly to actual item. ISL Industrial Limited (Importer) will do everything possible with in reason to maintain stocks of products advertised but cannot be responsible for unforeseen shortfalls beyond their control. Reproduction in whole or part is prohibited without written approval © 2022. E & OE.